

INSPIRED⁷⁴

August 2021 - **NOT FOR SALE** - An inspiration book of interior design references. - www.mhllt.com

INTERIOR DESIGN



MAHALLATI
INTERIOR DESIGN

*Sophisticated Bedrooms
With Low Platform
Beds*

*Ideas for Styling Acrylic
Dining Chairs*

*Chic Ways to Embrace
Rustic Decor*

Visit our website:
www.mhllt.com

Designed to Be Distinguished

Mahallati is an internationally acclaimed interior design, manufacturing and production firm based in Bali, Indonesia.

With a team of over 120 artisans, designers, woodcrafters, metal workers, upholsterers and consultants in related fields with over

a century of collective industry experience; we work closely with our clients to create exceptional work. Our innovative workflow results in a true end-to-end solution and our growing portfolio of successfully executed projects have won awards and hearts across 3 continents.



CONTACT

+62 817 551 414
info@mhllt.com

LOCATION

Jl. Gn. Tangkuban Perahu
No.303, Padangsambian
Klod, Denpasar Bar.,
Kabupaten Badung, Bali
80117



**WHAT'S
INSIDE?**

Sophisticated
Bedrooms With Low
Platform Beds

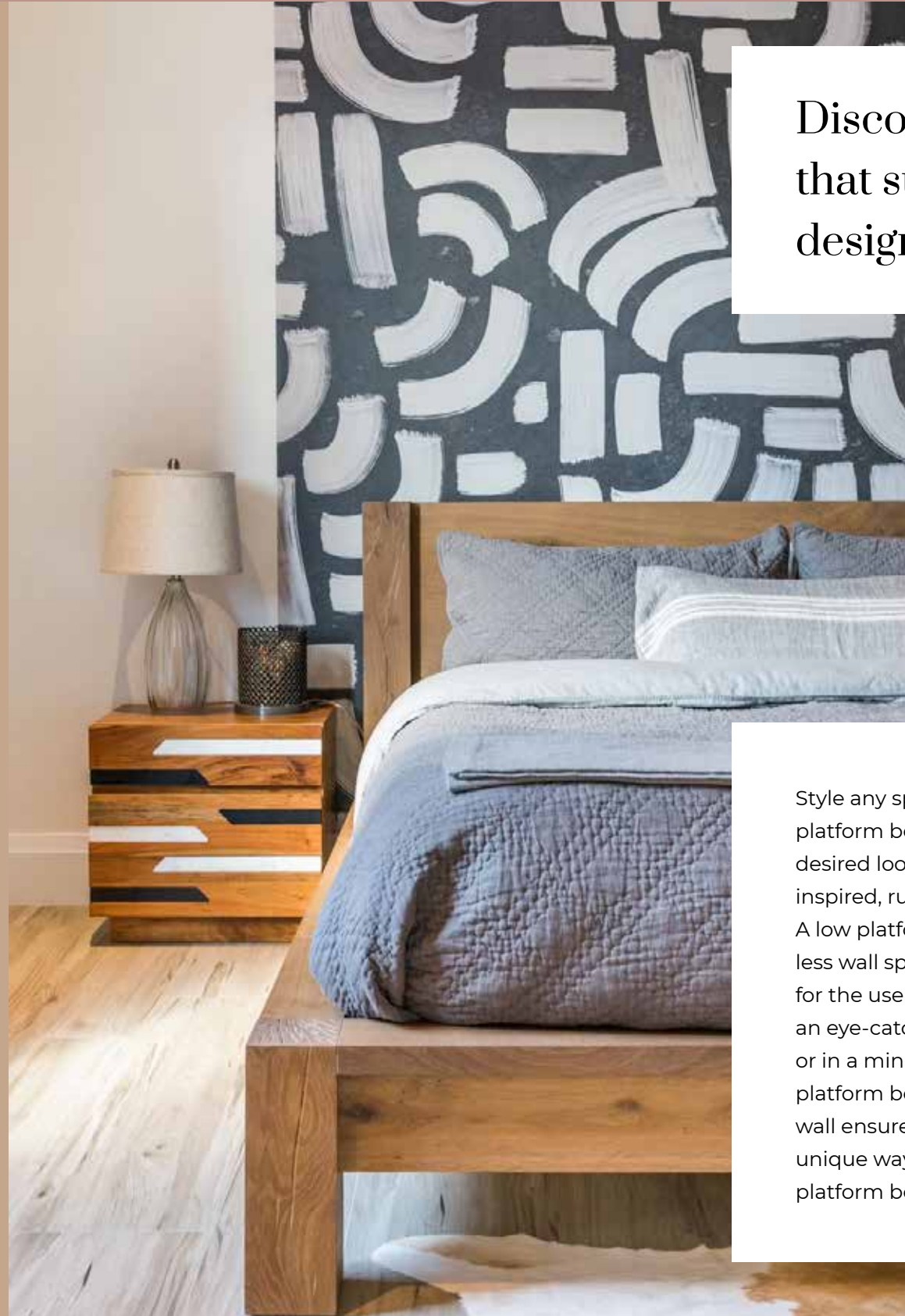
Ideas for Styling Acrylic
Dining Chairs

How to Get Creative
With Industrial-style
Pendant Lights

Chic Ways to Embrace
Rustic Decor

Visually Inspired

Sophisticated Bedrooms With Low Platform Beds



Discover a trend that suits any design style.

Style any space with a low platform bed, whether the desired look is bohemian-inspired, rustic, or minimal. A low platform bed takes up less wall space, which allows for the use of large wall art or an eye-catching accent wall; or in a minimal space, a low platform bed against a neutral wall ensures simplicity. Discover unique ways to style a low platform bed.



**LIVING
AMONG THE
MOUNTAINS**

Located within the Yellowstone Club in Montana, this mountain-style bedroom features rustic accents and views of the surrounding mountains. Design by LKID.



**SUNNY &
SPACIOUS**

This bright, open-concept master bedroom merges simple colors with bold styles—like the intriguing coffee table, unique lighting fixtures, and creative bedside tables. The low platform bed serves as a simple focal point in the modern space by Axis Mundi.



BOHEMIAN CHIC

Here, Khoury & Vogt Architects uses neutral, earth tones to create this bohemian-style master bedroom with a low platform bed. The steel and glass wall makes the space feel brighter, while the vaulted, white-washed oak ceiling makes the room feel larger.



CLEAN & CONTEMPORARY

In this contemporary bedroom, JN Interior Spaces uses a sleek wood and leather bed to create a simple yet stylish space.

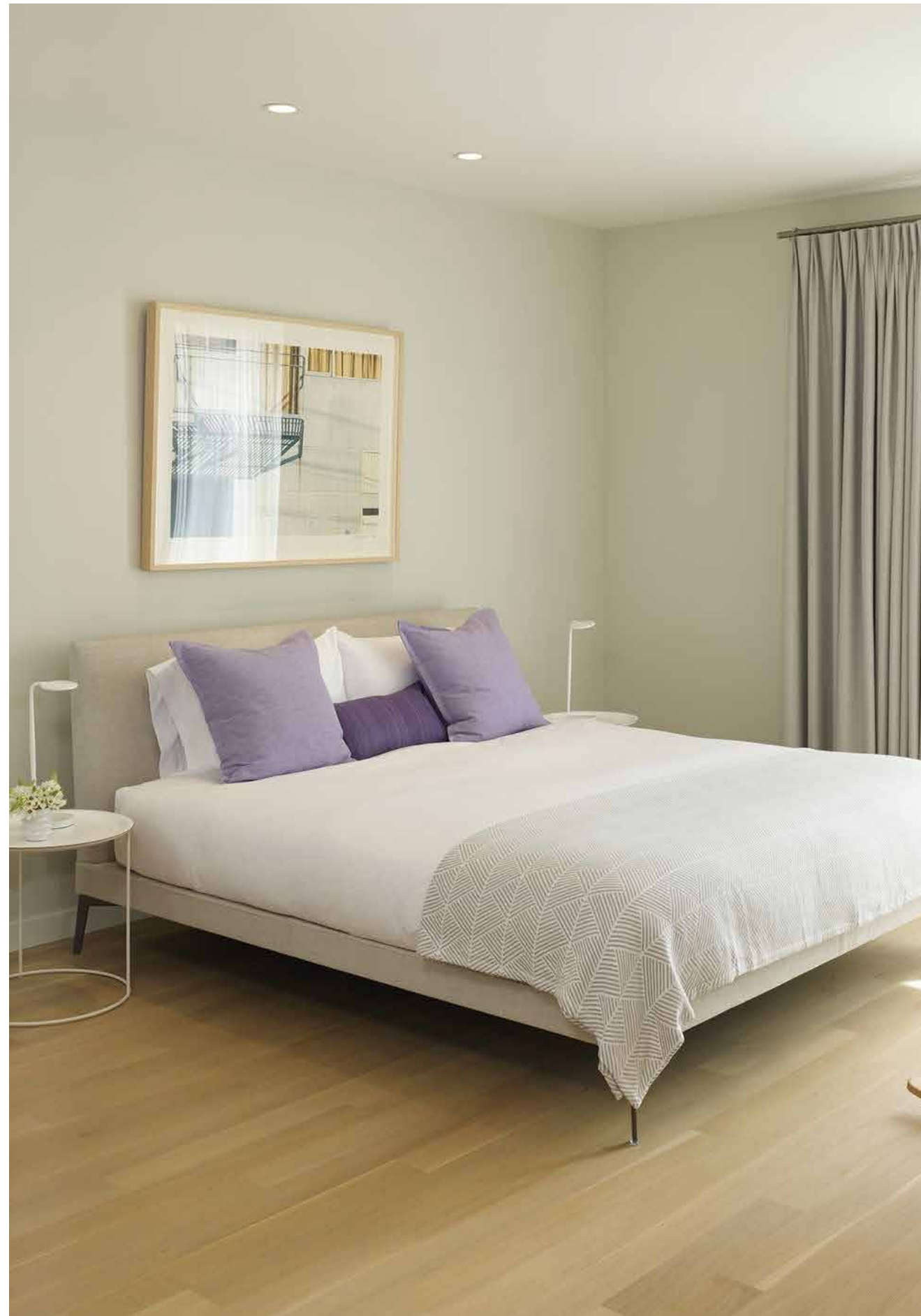
A POP OF PURPLE

This master bedroom puts a modern twist on a traditional space. Purple throw pillows adorn the low platform bed to add a pop of color. Design by Nystrom Design.



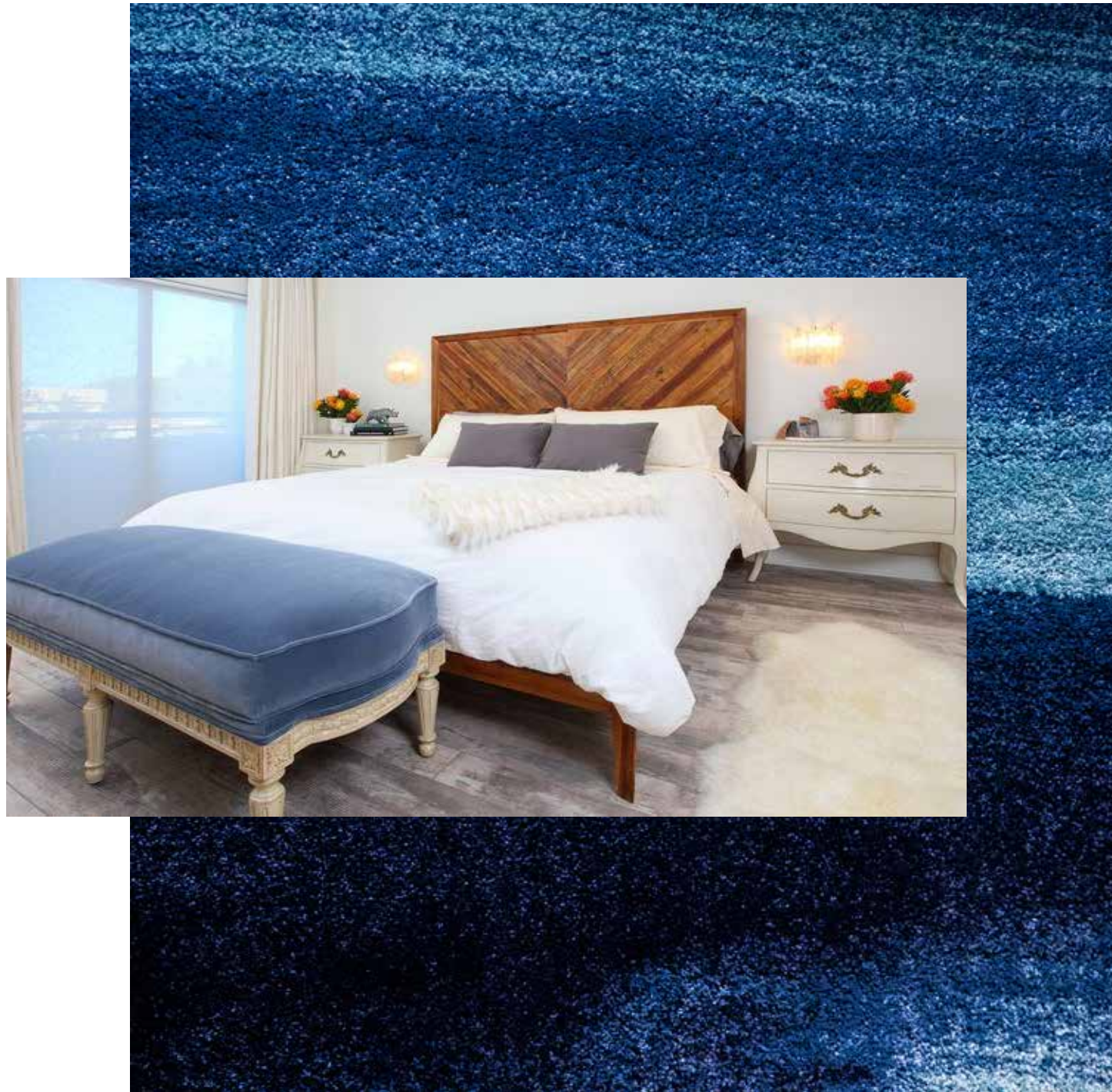
A SPLASH OF COLOR

Boasting views of the city, this Toronto penthouse master bedroom pairs bold colors with simple shades of gray. The leather platform bed adds class and sophistication to the colorful interior. Design by Sheree Stuart Design.



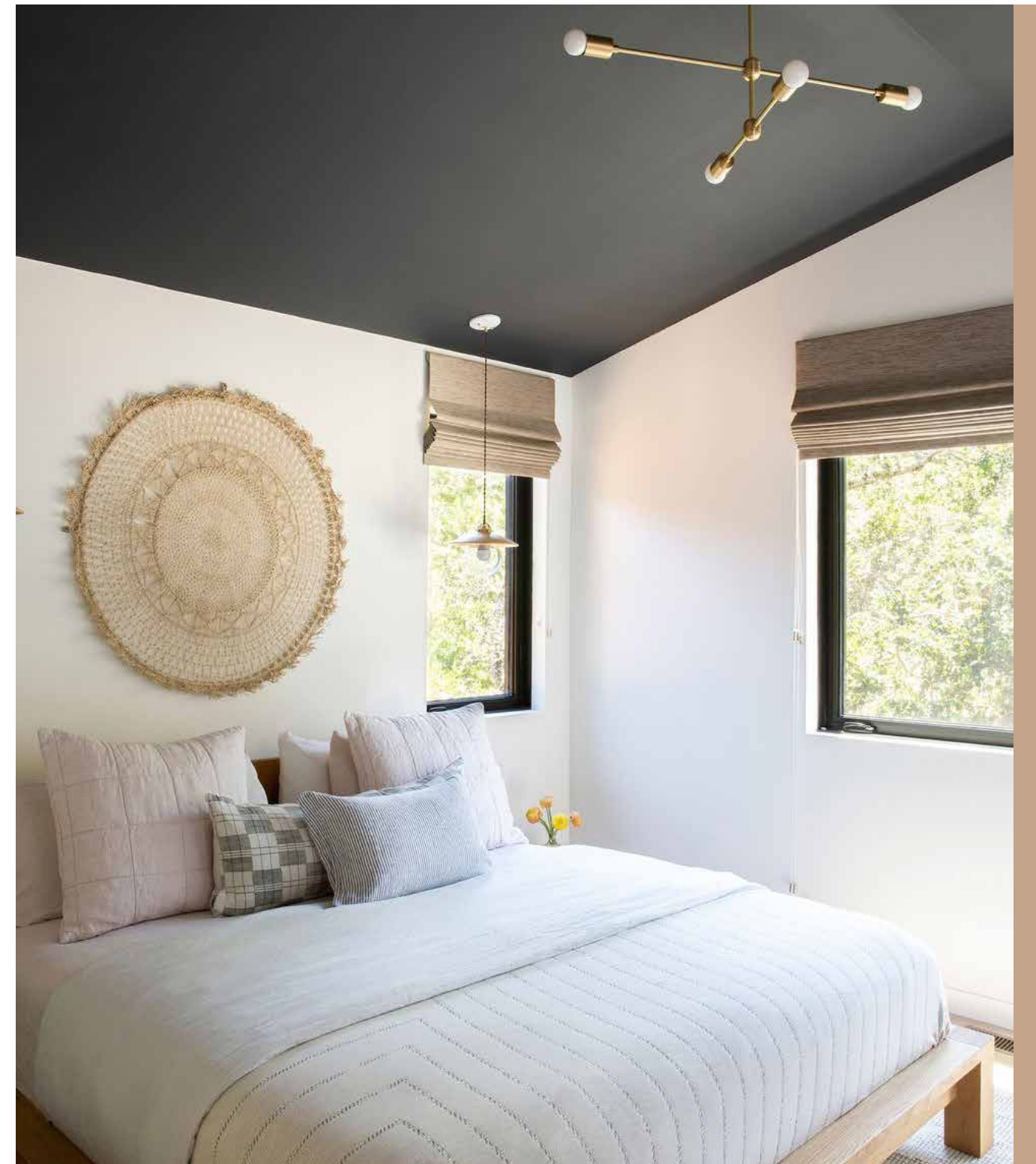
GORGEOUS GRAYS

Celebrating different shades of gray and black, this moody bedroom by Isolina Mallon Interiors features a low platform bed.



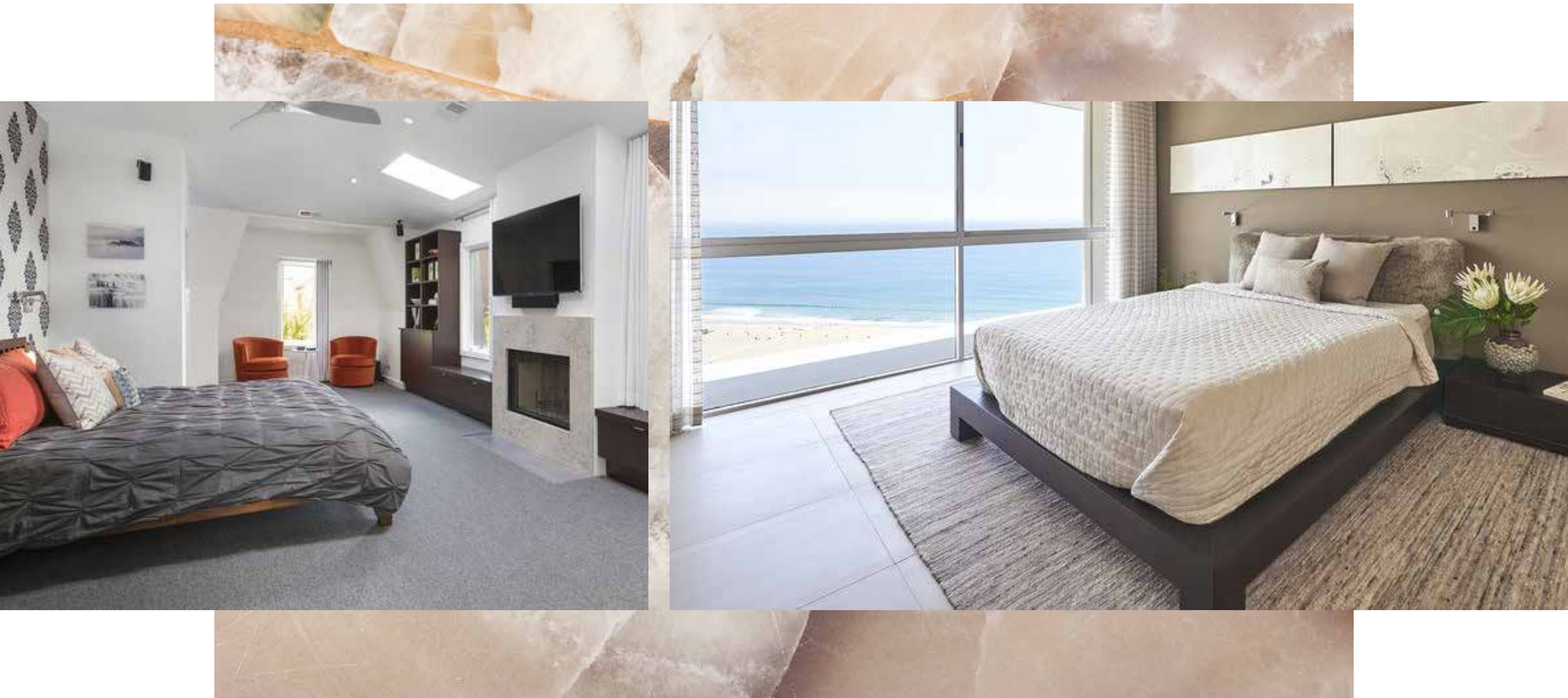
ECO-FRIENDLY DESIGN

Here, Sarah Barnard Design created a stylish bedroom using custom-made and sustainably-sourced furnishings.



HIGH CONTRAST

A master bedroom by Anja Michals Design features a platform bed, contemporary lighting, and textured wall art. The dark blue-gray ceiling contrasts with the white walls and the light bedding.



PLAYING WITH PATTERN

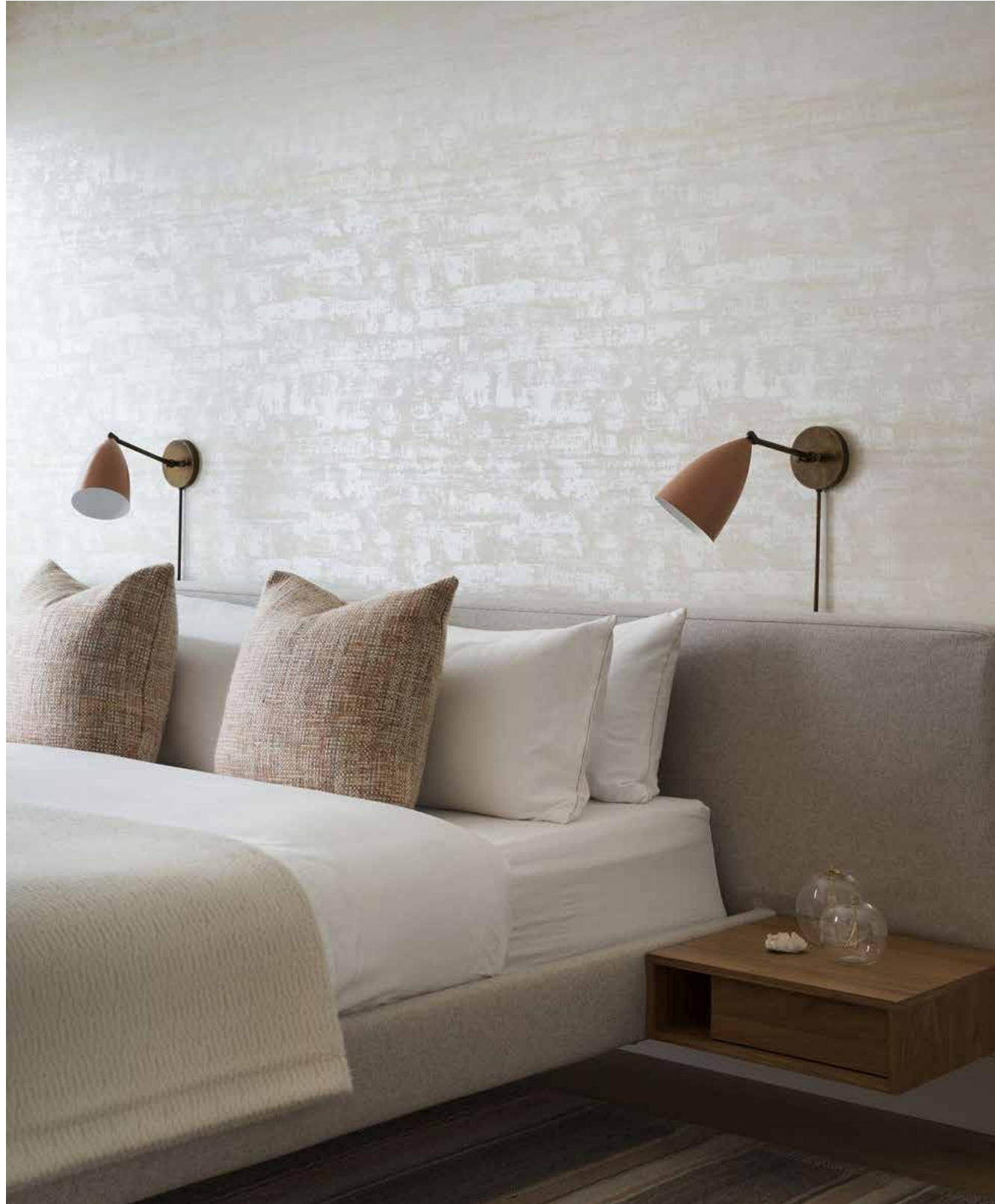
A low platform bed allows for more of the wall to be visible. Here, Dresner Design situates a low platform bed on the accent wall, which contains a black and white patterned wallpaper.

CLEAN LINES

Floor-to-ceiling windows allow natural light to enter this master bedroom, while the ebonized platform bed keeps the space feeling minimal and clean. Design by Sarah Barnard Design.

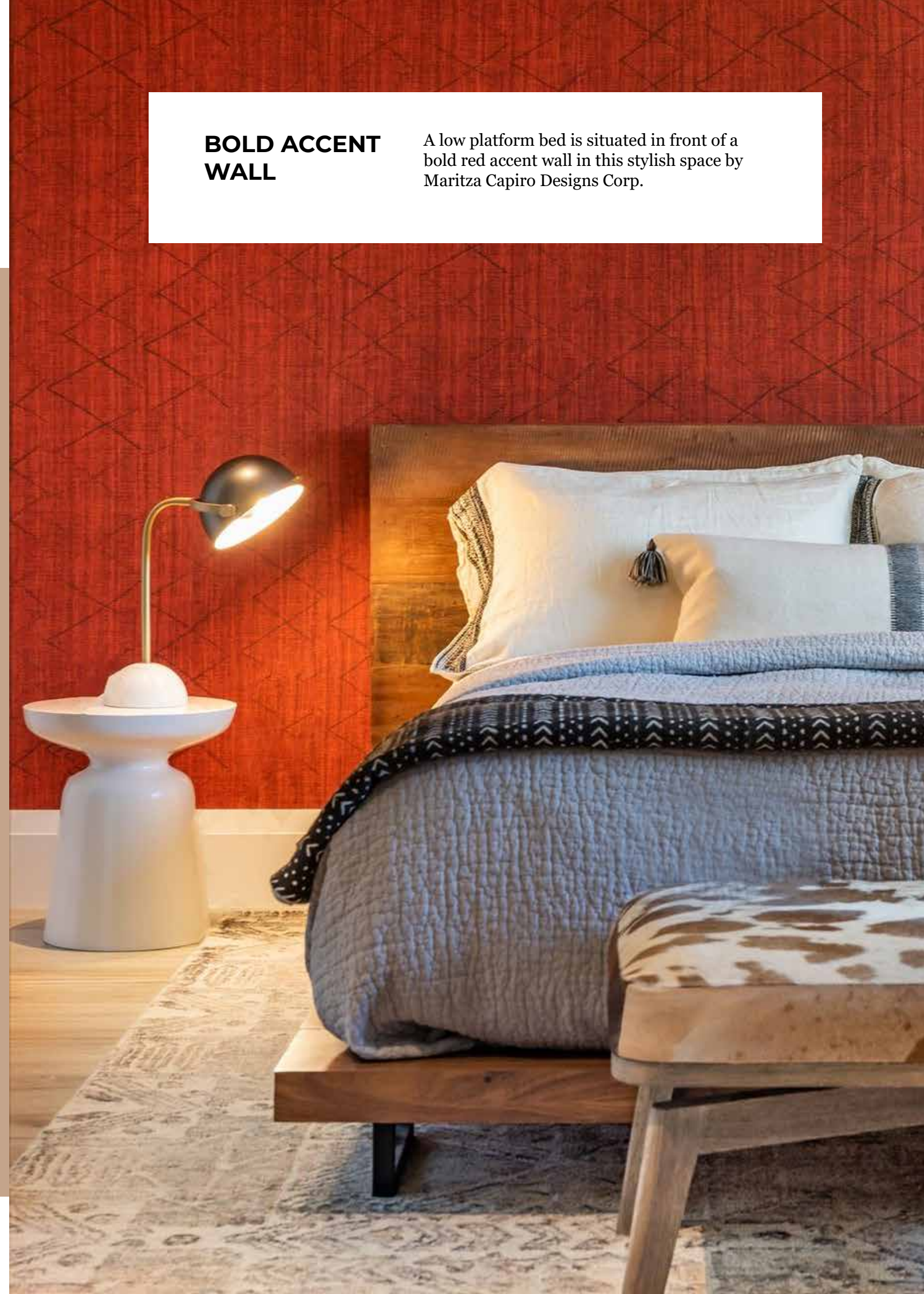
PALE HUES

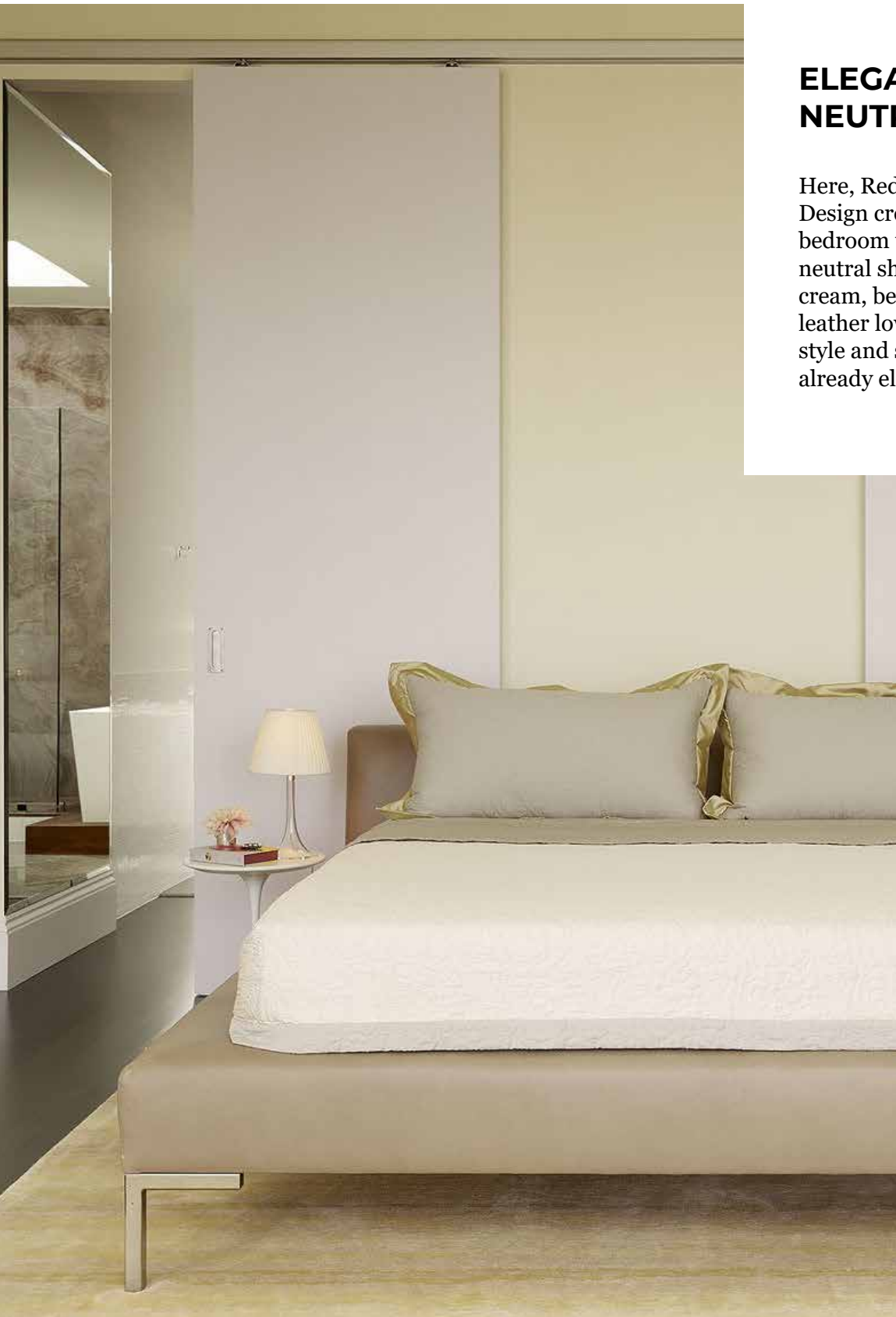
Cream, light browns, and pale pinks come together to create a serene, mid-century bedroom by Kendall Wilkinson.



BOLD ACCENT WALL

A low platform bed is situated in front of a bold red accent wall in this stylish space by Maritza Capiro Designs Corp.





ELEGANT NEUTRALS

Here, Redmond Aldrich Design creates a beautiful bedroom with a blend of neutral shades, including cream, beige, and gold. The leather low platform bed adds style and sophistication to the already elegant space.



PLAYFUL ELEMENTS

Located in a Chicago high rise, this child's bedroom blends playful colors with sophisticated design. The platform bed is adorned with exciting patterns and shades of blue and green. Design by Amanda Webster Design.



BOLD ARTWORK

A low platform bed draws attention away from itself, and gives the room's unique wall art the attention it deserves. Design by Maritza Capiro Designs Corp.



BLUE AND YELLOW ACCENTS

This deep blue, upholstered bed adds a pop of color to this moody bedroom by Frampton Co. The bright yellow nightstand serves as a great contrast to the dark shades in the space.



Ideas for
Styling

ACRYLIC

Dining
Chairs





MID-MODERN NEUTRALS

Here, neutral hues and mid-century designs offer a backdrop for bold seating. Design by Pamela Pennington Studios.



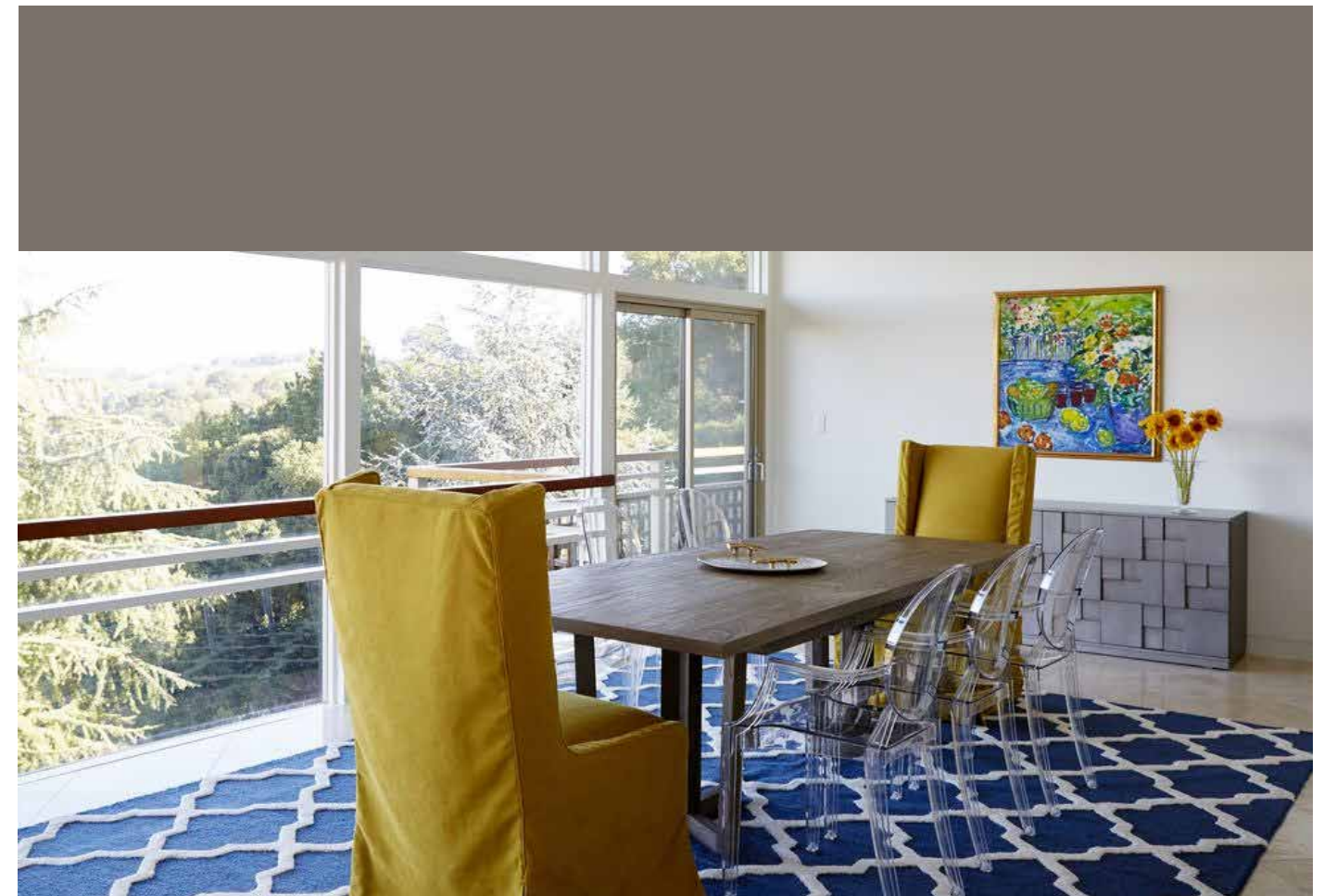
EYE-CATCHING COLOR

An orange hue adds a pop of color to this dining area. Design by Spencer & Wedekind.



**BOLD
CONTRASTS**

In a space from Brio Interior Design, a lush, hide rug offsets the sophisticated, synthetic style of the chairs.



MAJOR VIEWS

When positioned in front of large windows, contemporary, acrylic seating creates a compelling contrast with the scenery outside. Design by Workroom C.

NOVEL NAVY

In this design by Wendy Labrum Interiors, the upholstery on the chair seats matches that of the banquettes.

ACRYLIC DETAILS

Experiment with a subdued version of the trend by incorporating acrylic chair legs. Design by Jackson Paige Interiors.

ALL-OUT ART DECO

Submit to the appeal of an immersive, Art Deco style, as demonstrated in this dining area from JMA Interior Design.



CALIFORNIA MODERN

As part of a sophisticated, organic design, acrylic chairs provide a contemporary counterpoint. Design by Amanda Barnes Interiors.



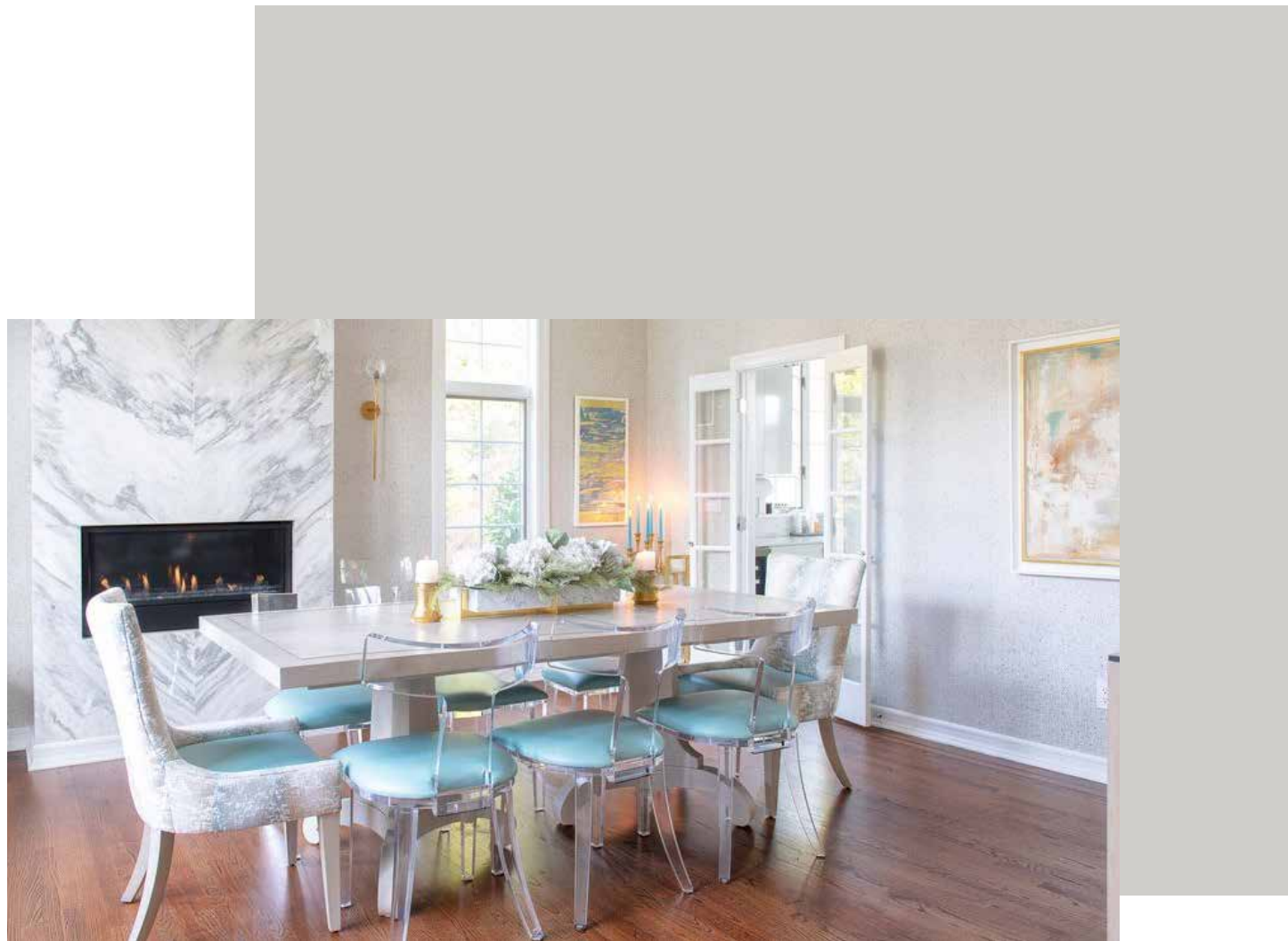


**ALL-OUT ART
DECO**

Submit to the appeal of an immersive, Art Deco style, as demonstrated in this dining area from JMA Interior Design.

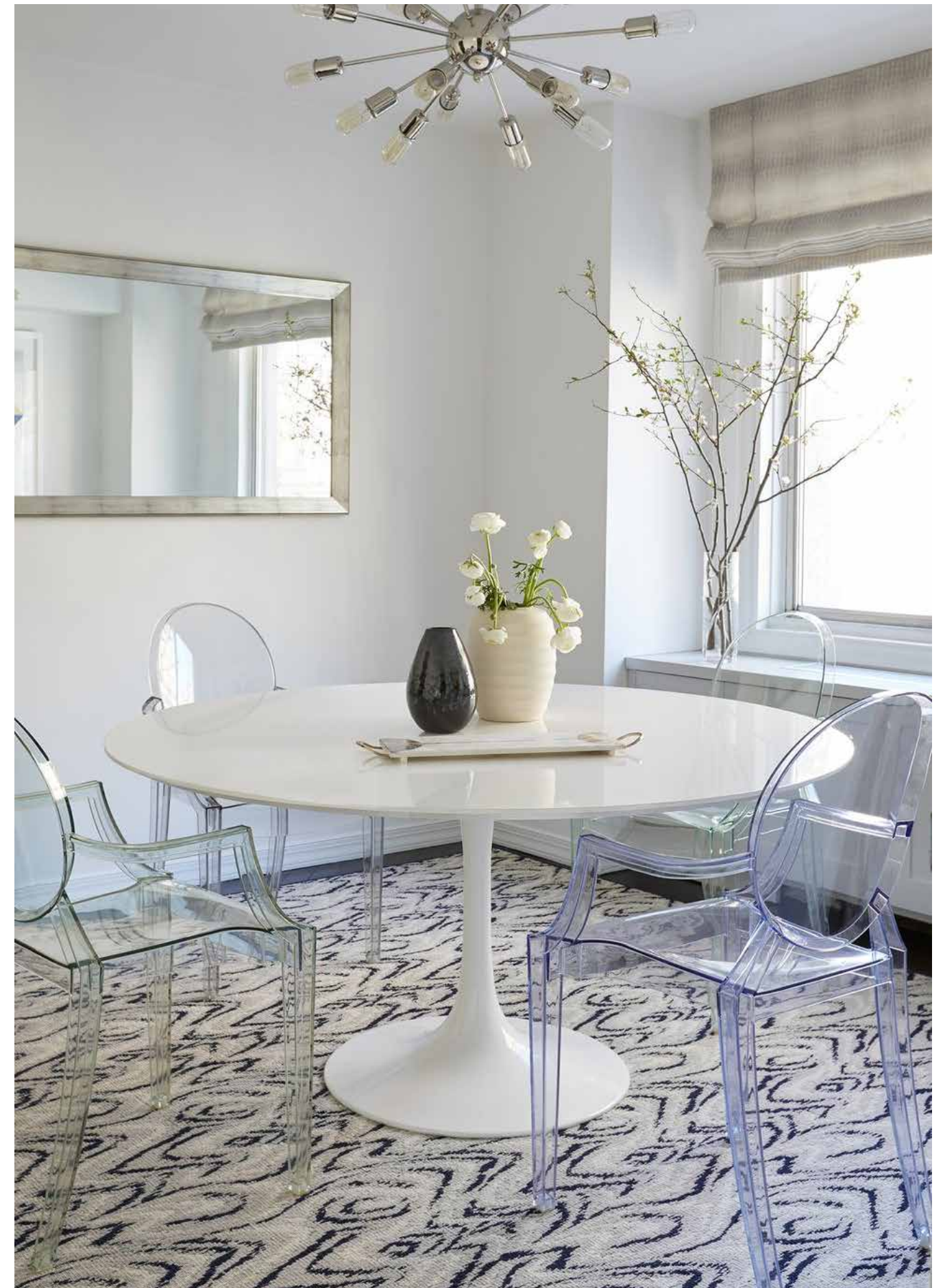
CRISP SURROUNDINGS

Here, Brooke Moorhead Design rounds out the space with a Saarinen-style table and silver-hued accessories.



CONTRASTING MARBLE

A marble fireplace wall mixes well with the acrylic of the chairs. Design by Lara Michelle Interiors.





SOFT SILHOUETTES

The curved shape of these dining chairs adds softness to this design by Annie Santulli Designs.

MATCHING ACCENTS

Clear vases in purple and green complement the look of the dining chairs. Design by Estee Design.



CONTEMPORARY REFLECTIONS

A leaning, floor-length mirror reflects the dining table and chairs. Design by Marcia Moore Design.

PENDANT

HOW TO GET CREATIVE WITH

You can't go wrong with neutral tones, natural materials, and no-fuss furniture.

Rustic decor is all about a no-fuss aesthetic that showcases the beauty of subdued hues, natural materials (think wood beams or touches of stone and clay), and comfortable furnishings. This versatile design style works in just about any interior, from the bathroom to a living room. And while exposed beams are certainly a good start, it's also worth considering original framing, flooring, and bricks.

Looking for elegant ways to incorporate a rustic vibe into your space?



INDUSTRIAL-
STYLE PENDANT
LIGHTS



ALL-OUT ART DECO

Submit to the appeal of an immersive, Art Deco style, as demonstrated in this dining area from JMA Interior Design.



LIGHT & BRIGHT

Here, Paul Brant Williger, Architect uses two large pendant lights to complete this white, bright kitchen.



AN UNEXPECTED ACCENT

In a kitchen by Brady Design, the distressed, industrial-style pendant lighting serves as an unexpected accent in an otherwise contemporary space.



DEEP & MOODY

A moody, contemporary kitchen by Michele Plachter Design features black cabinetry and industrial influences, including five black pendant lights over the counter.



BEAUTIFUL BLUES

Blue Bahia granite countertops, a glass tile backsplash, and a lantern-style fixture complete this compact kitchen by Iantha Carley Interiors.



A TOUCH OF INDUSTRIAL

Equipped with modern appliances, hardware, and accessories, this kitchen features a touch of industrial inspiration with its large metal pendant lighting. Design by Laura Hodges Studio.



FARMHOUSE STYLE

Boasting a custom white oak table, antique stone floor, and distressed pendant light, this farmhouse kitchen in Montana was designed by Koo de Kir Architectural Interiors and styled by Stacey Kunstel.



A POP OF COLOR

Paired with colorful barstools, these hanging marigold pendants add a bit of color to this white kitchen by Scott Sanders.



A HINT OF RED

From the bold pendant light to the knobs on the oven, this simple and stylish kitchen features small red accents. Design by De-Spec.



CHIC & CONTEMPORARY

Here, Florence Livingston Interiors creates a contemporary kitchen with walnut cabinetry, quartz countertops, and black pendant lights.



PLAYFUL COLORS

From the vibrant runner to the colorful vases, this playful space by KMID | Kate Maloney Interior Design is completed with metal pendant lighting.



GOOD AS GOLD

Boasting a neutral color palette, this chic kitchen by Mendelson Group features gold accents, from the pendant lights to the range vent.

A TRULY INDUSTRIAL SPACE

Located in the Arts District within Los Angeles, this industrial-style loft features small pendant lights across the ceiling. Design by Andrea Michaelson Design.



EXPERTIMENTING WITH STRIPES

A large pendant light hangs from the center of the striped ceiling in this bedroom by SUBU Design Architecture.

EMBRACE

RUSTIC DECOR

You can't go wrong with neutral tones, natural materials, and no-fuss furniture.



FARMHOUSE STYLE

A 19th-century Italian table from TallBoy Interiors and antique dining chairs steal the show in designer Rita König's northeastern England dining room. The curtains are of a Lee Jofa stripe, the artichoke lithograph is by Sarah Graham, and the walls are in Edward Bulmer's Lilac Pink.



AIRY RETREAT

White Company Founder Chrissie Rucker calls this airy rustic retreat in London home. In the pool house, a calming palette complements wood accents, making it the perfect place for guests to relax.





URUGUAYAN ABODE

In the living room of this Uruguayan retreat, the custom daybed is from Lucila Del Campo, a shop in the nearby resort town of La Barra. The curtains are of a natural linen, and the walls and floor are hand-poured concrete.



MOUNTAIN LODGE

In a Montana mountain lodge, steel-framed windows lend a modern edge to the wood-paneled living room, which overlooks the Rocky Mountains. The custom sofas are in a Studio Four NYC fabric, the custom settee is covered in a Hodson McKenzie fabric, and the custom swivel chairs and 1930s English wing chair are in fabrics from ALT for Living.



STONE FIREPLACE

A stone fireplace adds a rustic touch to this vibrant living room owned by Amy Fine Collins. The Fishers Island family getaway features painted Louis XVI chairs that surround a 1940s table from Sutter Antiques.

WOODSTOCK RETREAT

A mica pendant by Huniford Collection hangs above a Regency table and an 18th-century chair in the entry of this Woodstock, NY home; the 19th-century dressing table and 18th-century chair are American, the bronze statue is of Nicholas's grandmother Frances Ottley Wood, and the doors and flooring are reclaimed wood.



COTTAGE STYLE

From this angle, the kitchen in this restored English rectory reveals its cottage influence, with exposed wood and a beech paddle board from Garden Trading resting on the counter.



NEW YORK RETREAT

An 18th-century sofa covered in a Fabricut fabric faces a wardrobe custom made from reclaimed wood and a Queen Anne corner chair in the bedroom of this Woodstock, NY home; the rug is vintage, the walls are painted in a custom C2 Paint color, and the ceiling and floors are of reclaimed wood.



CITY CHARM

The dining room inside a historic Manhattan home boasts a pine trestle table from Belgium, a settee and bench from Finch, and a deconstructed English Regency wing chair from Lee Stanton Antiques. The walls are painted in Benjamin Moore's White Dove and the mantel in Onyx.



FRENCH SKI CHALET

In Rothschild's French ski chalet, a hallway sheathed in reclaimed wood leads to a guest bedroom.



MONTANA GUESTHOUSE

A cozy Montana guesthouse designed by Ken Fulk beautifully reflects its natural surroundings. The dining area, the table, stool, ceiling light, and chairs (each of which is stenciled with the name of a famous partyer) are by Christian Liaigre and the flooring is reclaimed oak.



CONTEMPORARY FARMHOUSE

Pops of plaid in warm tones can give any space an instantly laid-back country feel. In the library of this L.A. home, the family's dachshund rests on one of a pair of armchairs from Obsolete covered in Ralph Lauren Home plaids. The oak table is from Lucca & Co., the early-20th-century leather armchair is English, the bookshelves and ladder are from Style de Vie, and the ceiling is clad in metal siding from Texas barns.



RUSTIC FARM

At a family's horse farm in Philadelphia, designer Ellen Hamilton crafts a rustic space with both comfort and sophistication. In the living room, the daybed by Paul Mathieu for Ralph Pucci is covered in a Larsen fabric, the rocking chair is by Thomas Pedersen, the side table is from Property, the circa-1950 candelabra is Danish, and the rug is Beauvais.

PHOTOGRAPHY

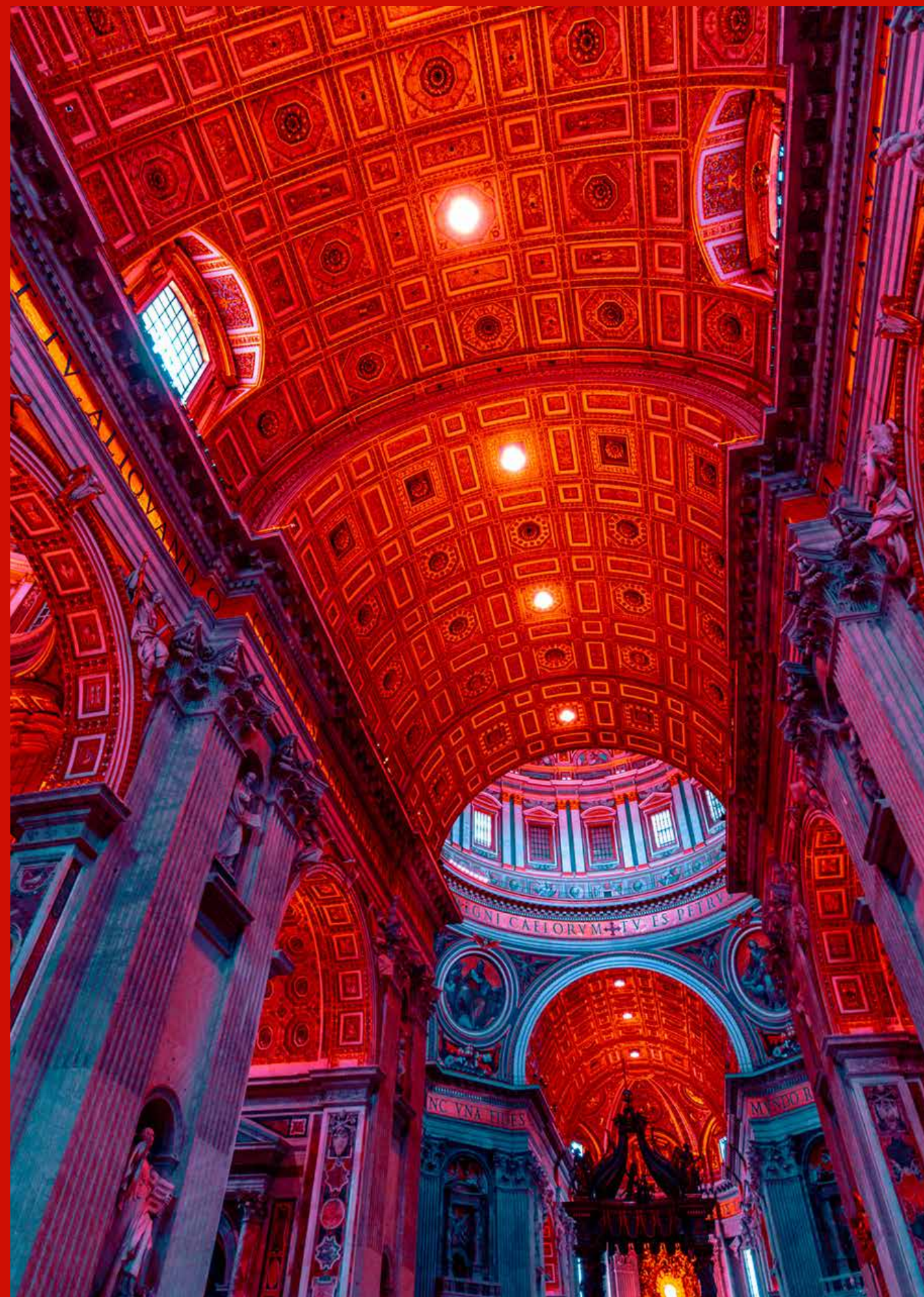
RED LIGHTS VATICAN

Discover The Basilica di San Pietro, in the heart of the Vatican, under a new glance, a new light.

Tinged with red and blue, it changes its appearance and offers a new vision.

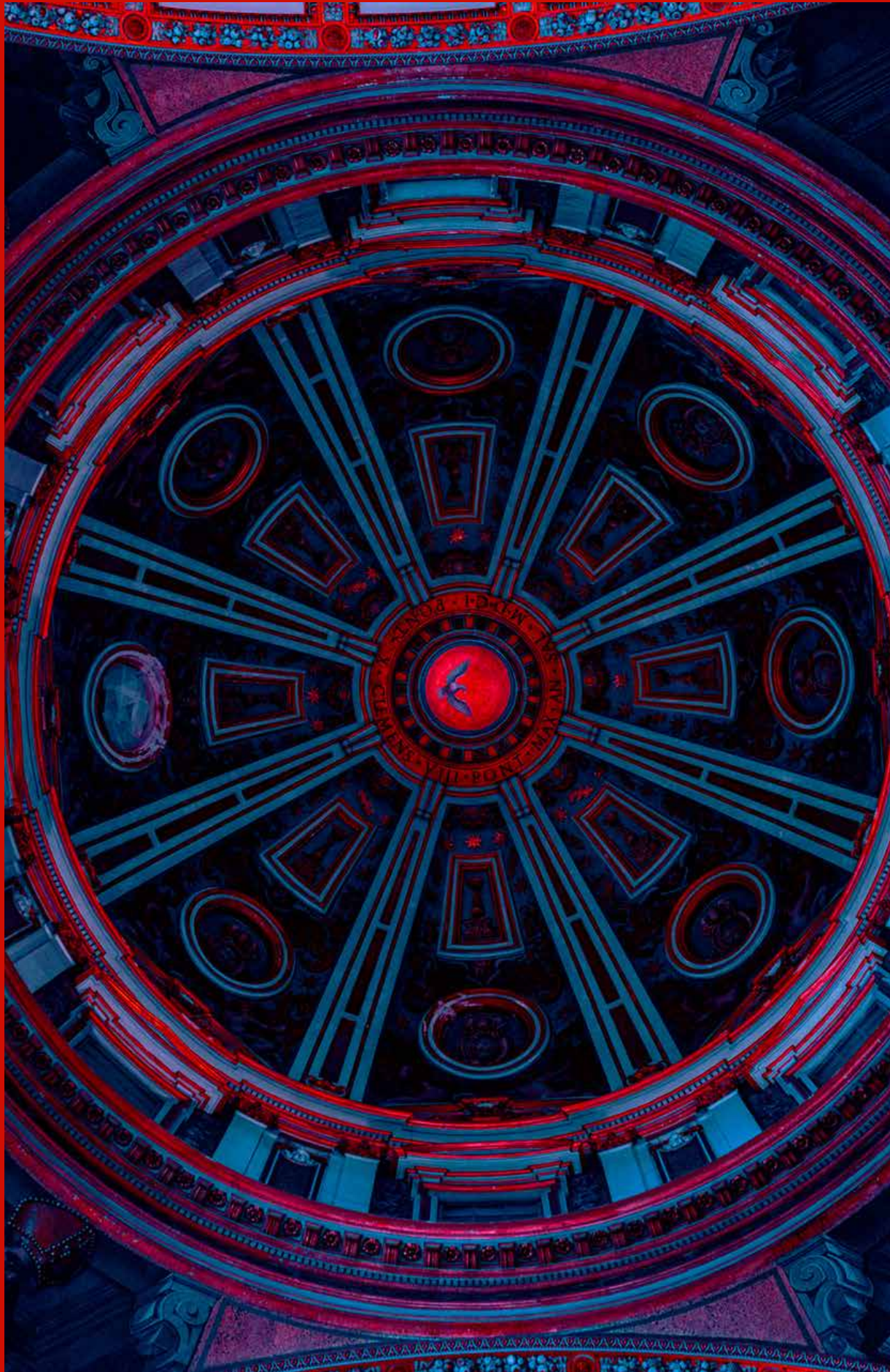
Welcome to the alternative universe : Red Lights - Vatican

visually inspired.









74 INSPIRED