

# INSPIRED<sup>76</sup>

October 2021 - **NOT FOR SALE** - An inspiration book of interior design references. - [www.mhllt.com](http://www.mhllt.com)

INTERIOR DESIGN



MAHALLATI  
INTERIOR DESIGN

*Tour a Breathtaking  
Geodesic Dome House*

*Designer-approved  
Rustic Living Room  
Ideas*

*A Fantastical World of  
Art and Hospitality in  
the Heart of Tulum's  
Jungle*

Visit our website:  
[www.mhllt.com](http://www.mhllt.com)

## Designed to Be Distinguished

**Mahallati is an internationally acclaimed interior design, manufacturing and production firm based in Bali, Indonesia.**

With a team of over 120 artisans, designers, woodcrafters, metal workers, upholsterers and consultants in related fields with over

a century of collective industry experience; we work closely with our clients to create exceptional work. Our innovative workflow results in a true end-to-end solution and our growing portfolio of successfully executed projects have won awards and hearts across 3 continents.



### CONTACT

+62 817 551 414  
[info@mhllt.com](mailto:info@mhllt.com)

### LOCATION

Jl. Gn. Tangkuban Perahu  
No.303, Padangsambian  
Klod, Denpasar Bar.,  
Kabupaten Badung, Bali  
80117



**WHAT'S  
INSIDE?**

Tour a Breathtaking  
Geodesic Dome House

Designer-approved  
Rustic Living Room  
Ideas

A Fantastical World of  
Art and Hospitality in  
the Heart of Tulum's  
Jungle

Timeless White Kitchen  
Design Ideas

Visually Inspired

BREATHTAKING

# GEODESIC DOME HOUSE

DOME HOUSE  
NESTLED IN THE  
FOREST

During the pandemic, hatmaker Nick Fouquet finished renovating his 1970s geodesic dome home, which is nestled on a third of an acre in Topanga Canyon in Los Angeles. "The whole process has been a labor of love and a very unconventional build," says Fouquet, whose unusual, custom-fitted hats feature whimsical details like macaw feathers, handwritten poems, and crystal rocks. (His namesake brand is worn by stars ranging from Pharrell Williams to Madonna.) "The dome is all triangles, octagons, pentagons," he says. "Everything has to be custom-built so it fits in the circular space."





The mezzanine sitting room has a Collin slipper chair, a Nole swivel chair, and an Armadillo rug; the Malm fireplace is vintage, and the surfboard is by Kris Brock.

During the pandemic, hatmaker Nick Fouquet finished renovating his 1970s geodesic dome home, which is nestled on a third of an acre in Topanga Canyon in Los Angeles. “The whole process has been a labor of love and a very unconventional build,” says Fouquet, whose unusual, custom-fitted hats feature whimsical details like macaw feathers, handwritten poems, and crystal rocks. (His namesake brand is worn by stars ranging from Pharrell

Williams to Madonna.) “The dome is all triangles, octagons, pentagons,” he says. “Everything has to be custom-built so it fits in the circular space.”

Surrounded by 100-year-old eucalyptus and fruit trees, the revived, energy-efficient structure shares land with wild deer and roaming bobcats. In modernizing the dome, challenges emerged quickly. Dry rot had consumed the structure’s base, so contractor Timothy McCarthy decided to rebuild the entire foundation.

His team removed the original spiral staircase from the heart of the home and installed a new one connecting to the basement-level bedroom; Fouquet encased each step in aquatic-themed fabric of his own design and capped the railing with a vintage glass compass.

“With the stairs gone, the light travels through space, and it becomes more magical,” McCarthy says. He and Fouquet met in 2012, when the milliner launched his eponymous brand and McCarthy built the first store for free in an underground garage; their friendship has deepened over the years, in part because of their shared membership in the ceramics collective Temple of Mediclaytion. They’ve since collaborated on four projects, including Fouquet’s retail spaces in Aspen and Venice Beach, California.

The original dome was built to absorb sound, so its exposed framework protects against loud echoes. But because of the structure’s complex compound angles, each steel-frame window had to be built to fit on-site; once the pandemic hit, McCarthy decided the best option would be to weld and fabricate each individual window himself.

To control the dome’s climate, they installed tempered, thermal-protected glass windows and an energy-efficient ceiling fan with large, wide blades that can push warm air down or draw heat out and drop the temperature of the room by 10 degrees. (There is a backup air-conditioning system, but as McCarthy points out, “it’s rarely needed because of the dome’s natural ability to self-regulate using the canyon breezes off the Pacific.”)

To complement the structure’s whitewashed, 20-foot-high ceilings, cantilevered stairs were constructed and now connect the living room to the mezzanine sitting room. A midcentury Malm fireplace that Fouquet found at Venice Vintage Paradise is the room’s focal point.

“I think space, just like us, is constantly evolving,” Fouquet says. Over the last year, he has installed an outdoor bathtub and planted tomatoes, peas, bell peppers, and herbs in a vegetable garden. “I’m on the road a lot—traveling now and in meetings with my team. This dome is my main base camp.”

Since ELLE DECOR started following Fouquet’s renovation, the daughter of the original owners, Vanya Goldberg, reached out to him to visit and share archival photographs. “It’s a wonderful feeling to see the house brought back to life,” she says. As for Fouquet, the home’s history and natural setting make all his efforts to restore it worthwhile. “I got so lucky,” he says, “to find my sanctuary.”



A vintage claw-foot tub with a cedar surround sits on the deck off the primary bedroom on the basement level; the stone wall was constructed from river rock found on the site.



▲ In the kitchen, the counters have Caesarstone tops, the oven is by Bertazzoni, the dishwasher is by Bosch, the sink and fittings are by Duravit, and the custom cabinets are in rift-cut oak; the backsplash is in Heath tile, and the artwork is by Cuba Scott.

The back of the house faces east; new custom steel windows were made on-site and feature highly energy-efficient double-pane glazing by G&D Glass. ▶



▲ The primary bedroom has a Saatva bed topped with John Robshaw bedding.



Fouquet, sporting one of his hats, stands on his terrace, with a view of Topanga State Park.



The living room walls are clad in tongue-and-groove painted cedar.



DESIGNER-APPROVED

# Rustic Living Room Ideas





## MODERN RUSTIC

From a wood vaulted ceiling to eye-catching stone-covered walls, this space is a lesson in rustic design.



## GLOSSY DETAIL

A white high-gloss ceiling adds a dose of drama to this elegant living room, featuring wood paneling.



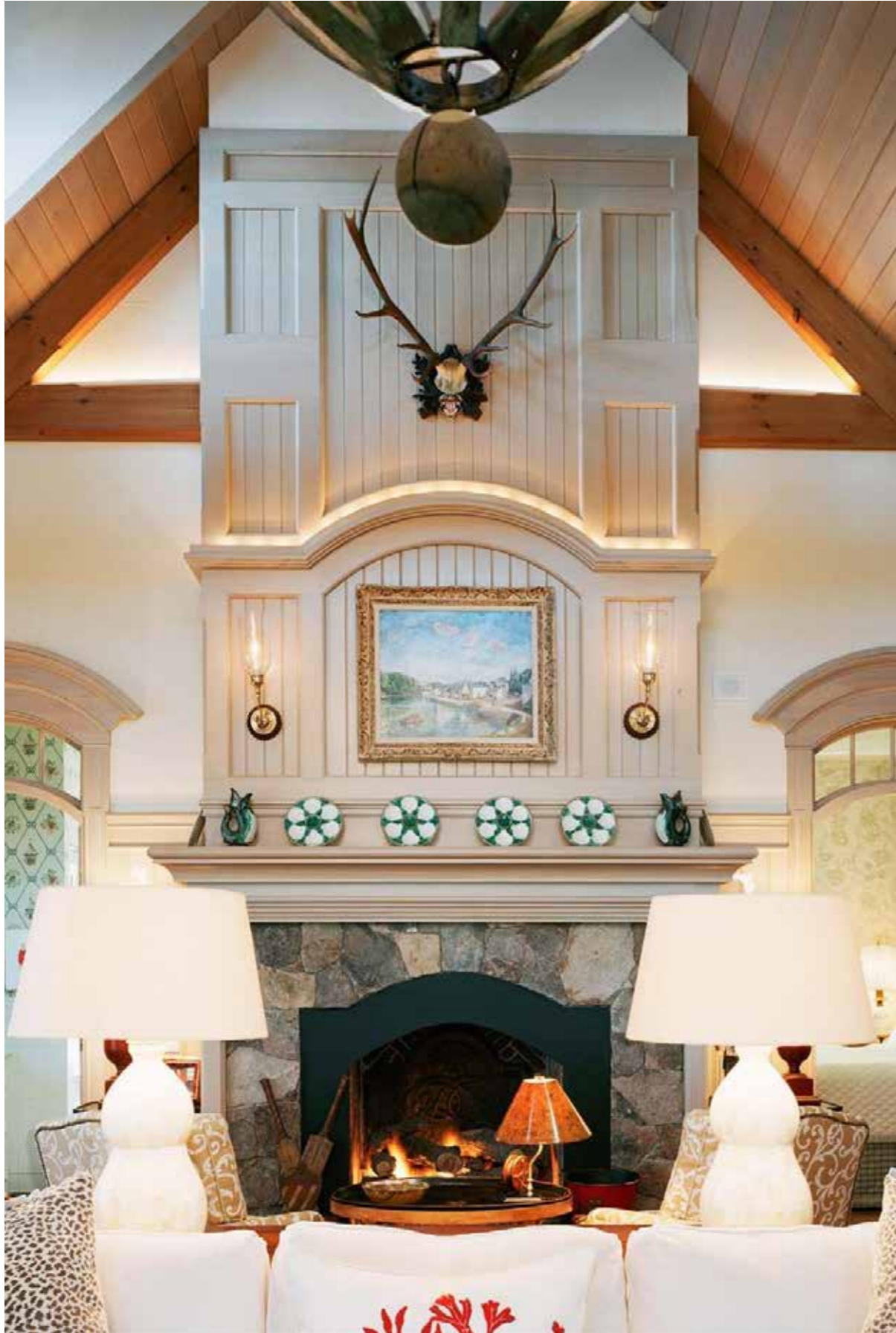
## MOUNTAIN RETREAT

A stone fireplace, combined with an all-wood ceiling, enhance this living room's rustic aesthetic.



## FLOOR-TO- CEILING WINDOWS

Floor-to-ceiling windows frame this striking living room design, boasting ample seating arrangements.



## COUNTRY RUSTIC

Add light moulded panels to an accent wall or mantel for a subtle countryside twist.



## MODERN FLAIR

Wood beamed ceilings, warm neutrals, and layers of pattern complete this rustic yet modern living room.



## DRAMATIC WOODWORK

Intricate wood detailing, like this domed ceiling, makes a living space feel particularly in sync with nature.



## PLENTY OF SEATING

Incorporate sweeping seating to invite friends and family to sit down, relax, and enjoy your welcoming space.



## COZY LIGHTING

Use warm, yellow accent lights to create even more depth and coziness.

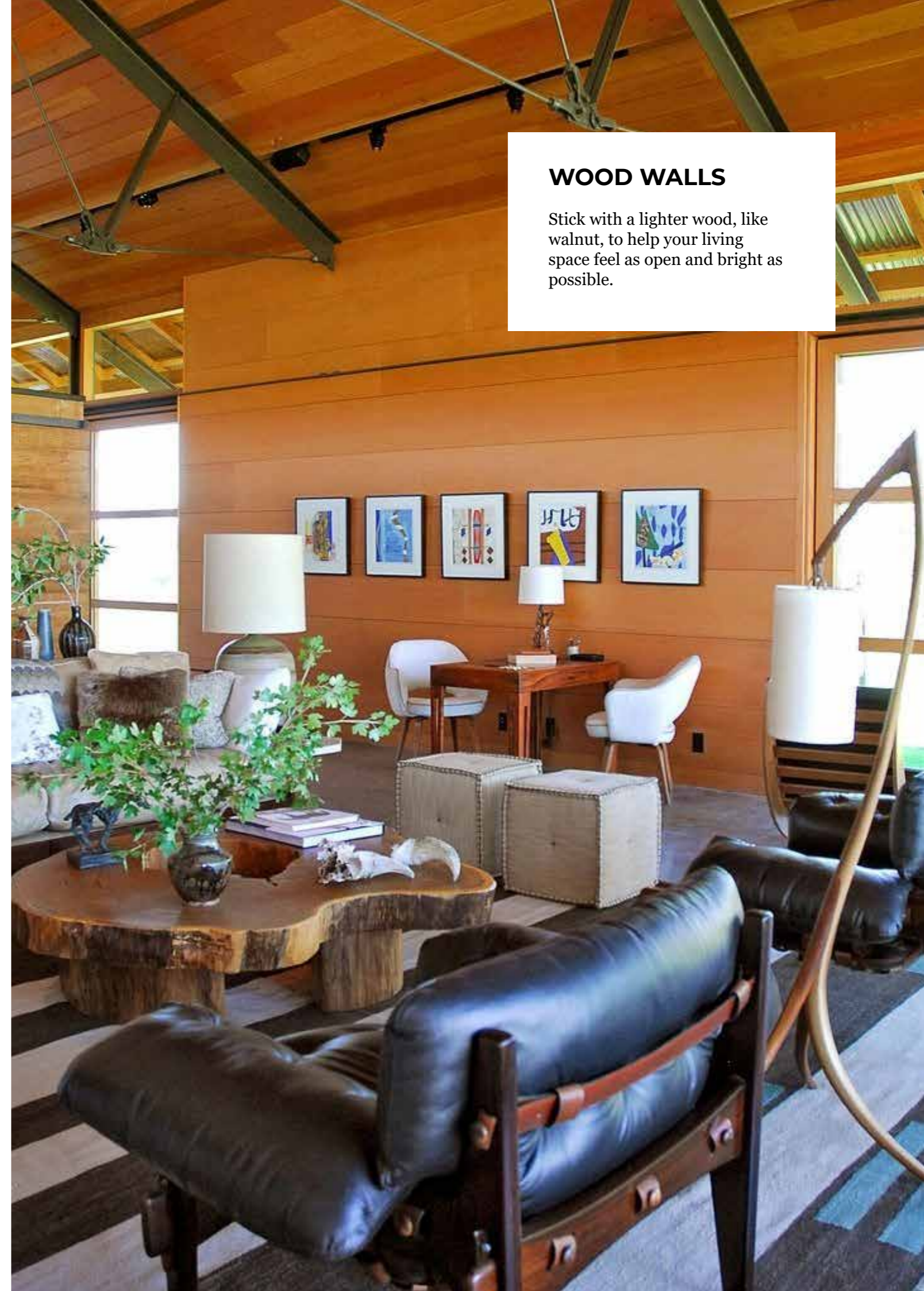
## DARK AND ROMANTIC

Juxtapose a jagged gray stone with dark mahogany wood to create a room filled with romantic cabin vibes.



## WOOD WALLS

Stick with a lighter wood, like walnut, to help your living space feel as open and bright as possible.





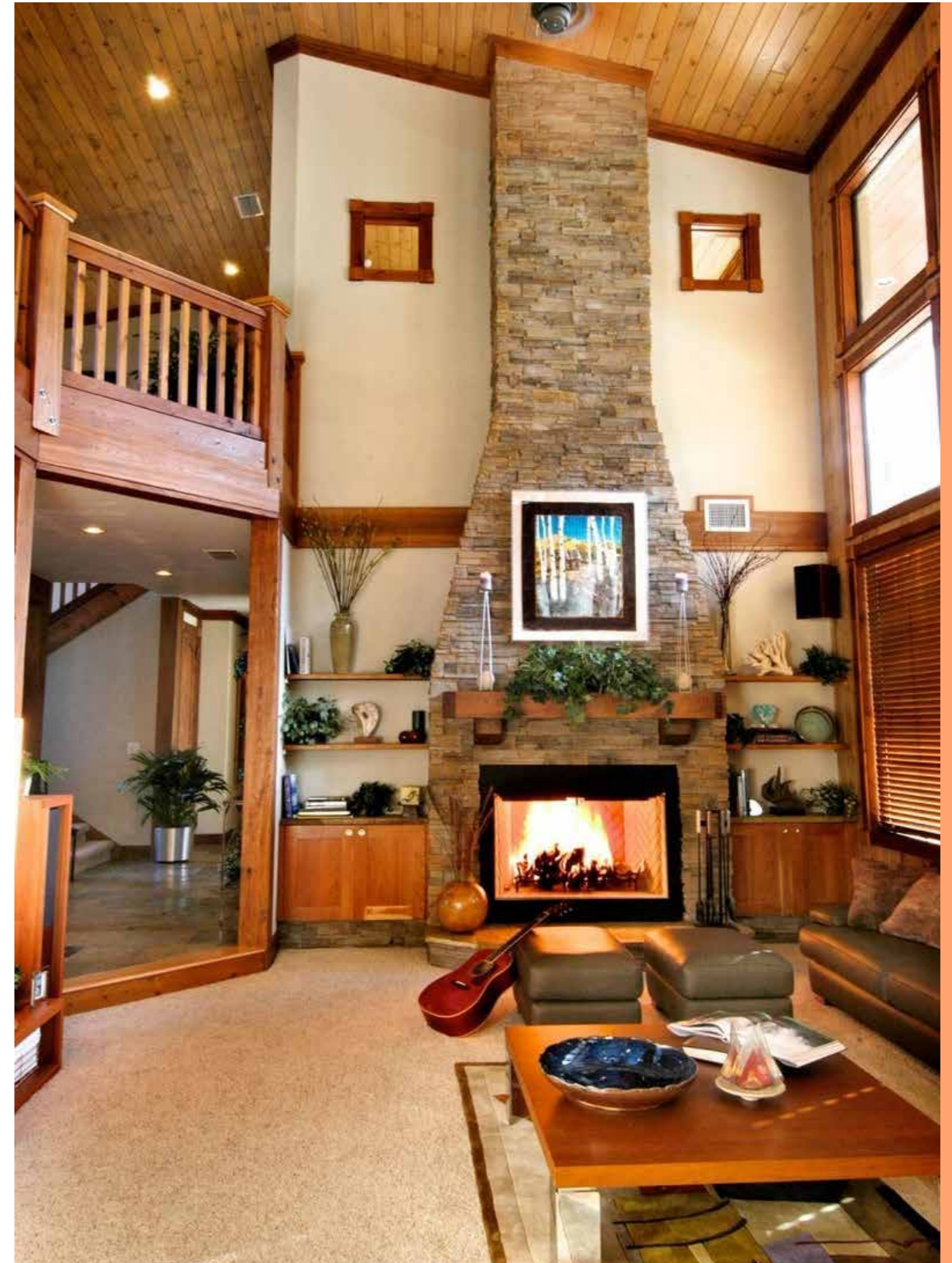
### STONE STATEMENT WALL

Let a stone wall be the focal point of your living area for a nature-inspired aesthetic.



### ANTIQUÉ RUG

An antique rug is the perfect way to bring an old-world feel to your living room.



### DOUBLE DECKER

Take your rustic design to new heights (literally!) with both first and second floor walnut cabinetry and railings.



## FLOOR-TO-CEILING VIEWS

A windowed wall is a must in a mountain cabin, especially when you have a stunning view like this.



## LIGHT AND MODERN

Opt for light-hued stone and stripped wood for a clean and contemporary take on rustic living.





## MOUNTAIN RETREAT

A stone fireplace, combined with an all-wood ceiling, enhance this living room's rustic aesthetic.



## MODERN FLAIR

Wood beamed ceilings, warm neutrals, and layers of pattern complete this rustic yet modern living room.



---

**A  
FANTASTICAL  
WORLD OF  
ART**

**AND  
HOSPITALITY  
IN THE HEART  
OF TULUM'S  
JUNGLE**

With its psychedelic structures and spiritual emanations, AZULIK provides an inimitable stay.



From above, it looks like a giant's game of pickup sticks, with its explosion of vines, branches, and straw. At ground level, it soon becomes evident that this is a visionary's kaleidoscopic creation, and a luxury one at that. Among its offerings are spiritual cleansings, gourmet dining, full spa services, luxury shopping. Hop over to the beach for a Mayan rebirth ceremony by day; indulge in a five-course chef's menu from a floating nest by night.

AZULIK is full of surprises. The resort compound—founded by former visual artist and visionary Eduardo "Roth" Neira—is situated on Tulum's popular hotel strip along the Yucatan Peninsula, where many of the town's international visitors convene to enjoy quaint-yet-lavish vacations just far enough away from Cancun mania and spring breaker chaos. While many things have changed in Tulum over the past two decades, Roth has been pushing his mission from the start. When AZULIK was originally built, the surrounding area was still a hidden piece of paradise and one of the country's best kept secrets. With its easy access to archeological sites and pristine, white sand beaches, Tulum has since become one of Mexico's most popular destinations, each year raking in more visitors than the one before.

But like many beach towns that make their way into the mainstream orbit, Tulum's fragile ecosystems have, over the years, been pushed to their limits by mega resorts and luxury hotels that sit upon the delicate shorelines, causing all sorts of environmental damage. Unlike the new slew of ecological pseudo-saviors, however, Roth and his team have been pursuing a mission of preservation and harmony for the past 20 years.



The entrance into Uh May and SFER IK



A suite at AZULIK Tulum.



The hotel features three restaurants.



Though not formally trained in architecture, Roth grew up in Argentina with two architect parents, and after moving to Tulum, teamed up with the indigenous Mayan communities who have been building on the jungle's dense landscape for centuries.

Without blueprints, Roth and his team worked—and continue to work—with sketches that are then translated onto the natural landscape. Unlike traditional building, which requires tearing down the landscape and creating a stable, artificial surface from which to build upon, AZULIK sits atop stilts, allowing for nature to remain alive beneath it. “When you flatten and level the land, you end up building on a cemetery,” Roth tells us. Without straight lines or flat surfaces, AZULIK was built. Polished concrete, twisted bejuco vines, and thatched roofs make up the majority of the hotel's architecture, with winding paths designed to relate to the curvature of the earth. While the original structures at AZULIK were considered to be direct replicas of the Mayan palapa (the traditional style of roofing), the techniques have changed over time to allow for more creativity in its construction. Now, by adapting to the landscape as they go, Roth and his team rely on trial-and-error to intuitively build every inch of the property.

It's an approach that might distress any traditional architect. Roth explains that this improvisational strategy is ingrained in indigenous craftsmanship, noting that the Mayans he works with “have the humility to see that these things aren't complicated.” Unbound by the contemporary rules of architectural design, the resulting spaces align with nature's existing structural logic. “I want to emphasize that my inspiration was and is the obstacles themselves,” Roth says.

“Since we use no tactual blueprints, we are free to think on our feet and incorporate new ideas as they present themselves. Sometimes, we end up with something quite different from what we envisioned at first, a new reality shaped by conceptions that are constantly evolving.”

The hotel’s villas—which range from the moderately priced Jungle Villa to the sprawling, butler-equipped Aqua Villa—are designed without lighting, showers, or air conditioning, and instead encourage guests to take baths, cool off by sea breeze, and power down along with the sunset. Bedding from the suites is recycled and used for Roth’s fashion line, which he sells on the property; food scraps from the hotel’s three restaurants are used to dye various textiles; fallen trees are recycled as repurposed for new structures throughout the two properties. Once guests leave their personal quarters, it can be easy to get lost, but with every wrong turn through the maze-like property, it is likely to stumble upon something worth stopping for. The spa, for instance, with its polished stepping stones, waterfalls, and cascading vines, leads to a spherical yoga dome where classes are regularly held. Cross one of the rope bridges and you’ll find restaurants serving an impressive array of delights. Other highlights include retail shops—IK\_RAUM, ANIKENA, and most notably, ZAK IK—which currently serves as the Dior boutique for the fashion house’s J’adior Tulum capsule collection.

Though Roth is a successful hotelier, his ambition for building AZULIK has always been fueled by the wish to fund a range of artistic endeavors. At the center of this is Uh May, an “interdisciplinary creative sphere” located just 30 minutes

from AZULIK in the nearby jungle. While its architectural style mimics that of the hotel, Uh May is also the grounds for a contemporary art museum, SFER IK, Roth’s own home, and a space to hold artisan workshops for Mayans and visitors alike. Spiraling paths and curvilinear walkways connect a series of cement domes, including the central structure that houses the museum’s exhibitions. According to Claudia Paetzold, SFER IK’s curator and artistic director, “People are patronized in museums because there are normally so many markers of authority when you enter.”

At SFER IK, security checkpoints and ticket taking are exchanged for spiritual cleansing and the removal of your shoes, connecting visitors—quite literally—to the earth. The museum feels reminiscent of the Guggenheim on a psychedelic trip, and throughout the space, artwork comes in many forms. Unlike traditional institutions, which function as sterile white boxes upon which art is hung, the exhibitions at SFER IK are designed to interact with the dome’s curved interior structure. Trees protrude from the museum’s floor, where holes have been carved above and below to provide a steady supply of light and rain, and locally abundant and organic materials make up much of the interior structure. According to Paetzold, displaying art in this manner—and environment—makes everything “feel alive.” She continues: “Our senses are the most sophisticated tool, so to reinvolve them in the art is what’s really special.”



# TIMETLESS



## WHITE KITCHEN DESIGN IDEAS

A kitchen is the heart of the home, and when it comes to crafting a timeless design scheme, you can never go wrong with an all-white palette. Curious about how to pull off the look? These high-design kitchens, boasting everything from sleek cabinetry to eye-catching tiles, are all the inspiration you need to make white hues work for your own space.

## CLASSIC WHITE KITCHEN

Brigette Romanek designed a classic kitchen for entertainment executive Kent Belden's Hamptons home. Tom Dixon Studio pendant lights and barstools from Thomas Hayes Studios complete the look.



## WHITE NEW YORK KITCHEN

A New York apartment, designed by Michelle Gerson, features a sleek white kitchen complete with Van den Akker light fixtures above the island. A pair of white Dennis Miller stools enhance the design.



## WHITE HAMPTONS KITCHEN

For a Hamptons beach house kitchen, interior designer Tamara Magel opted for a minimalist design. She outfitted the space with white cabinets, stainless steel appliances, and sleek pendants from Circa Lighting. Exposed beams and wood flooring bring an earthy feel to the design.



## PENTHOUSE KITCHEN

Fashion designer Jeffrey Dodd's Manhattan penthouse is a lesson in crafting a monochromatic space with character. The all-white surfaces and cabinetry make for a striking design.



## WHITE MODERN FARMHOUSE KITCHEN

Cassandra LaValle of Coco Kelley upgraded her traditional farmhouse-style kitchen with modern touches, including a sleek island, glossy wooden floors, and white cabinets.



## CONTEMPORARY KITCHEN

Malibu-based interior designer Taylor Ogle transformed the kitchen in her parents' Norman-style house on Washington's Bainbridge Island into a contemporary space that's full of character. Highlights include open shelving in a light wood tone and floor-to-ceiling glossed white tiles.



## WHITE CENTURY-OLD FARMHOUSE KITCHEN

Bright white paint was used in Magdalena Björnsdotter and Erik Björklund's century-old farmhouse in rural Sweden. The white kitchen features touches of black, along with a flea-market table, industrial-style chairs and a metal-and-driftwood pendant light by Olsson & Jensen.



## CLEAN-LINED WHITE KITCHEN

Retail guru Jeffrey Kalinsky's New York townhouse is a lesson in minimalism. The all-white kitchen includes cabinetry by Bulthaup, a countertop and sink from Corian, fittings by Vola, and an oven and cooktop by Gaggenau. The pendant is by Bega, and the floor is terrazzo.



## ORGANIC-MODERN KITCHEN

Homepolish Co-Founder Will Nathan's New York City kitchen, which was designed by Becky Shea, celebrates the beauty of an open-floor plan. The industrial-style space features a large marble island, a trio of minimalist pendants, and open shelving.

## OPEN- CONCEPT KITCHEN

A Boston condo with an open concept, designed by Erin Gates, features a sleek all-white kitchen with a large marble island and wire counter stools from Rove Concepts.



## CRISP WHITE KITCHEN

Bright whites add life to a kitchen by Los Angeles-based interior designer Jessica McClendon. From white walls to white cabinetry, the ultra-modern space feels welcoming.



## WHITE BREAKFAST BAR KITCHEN

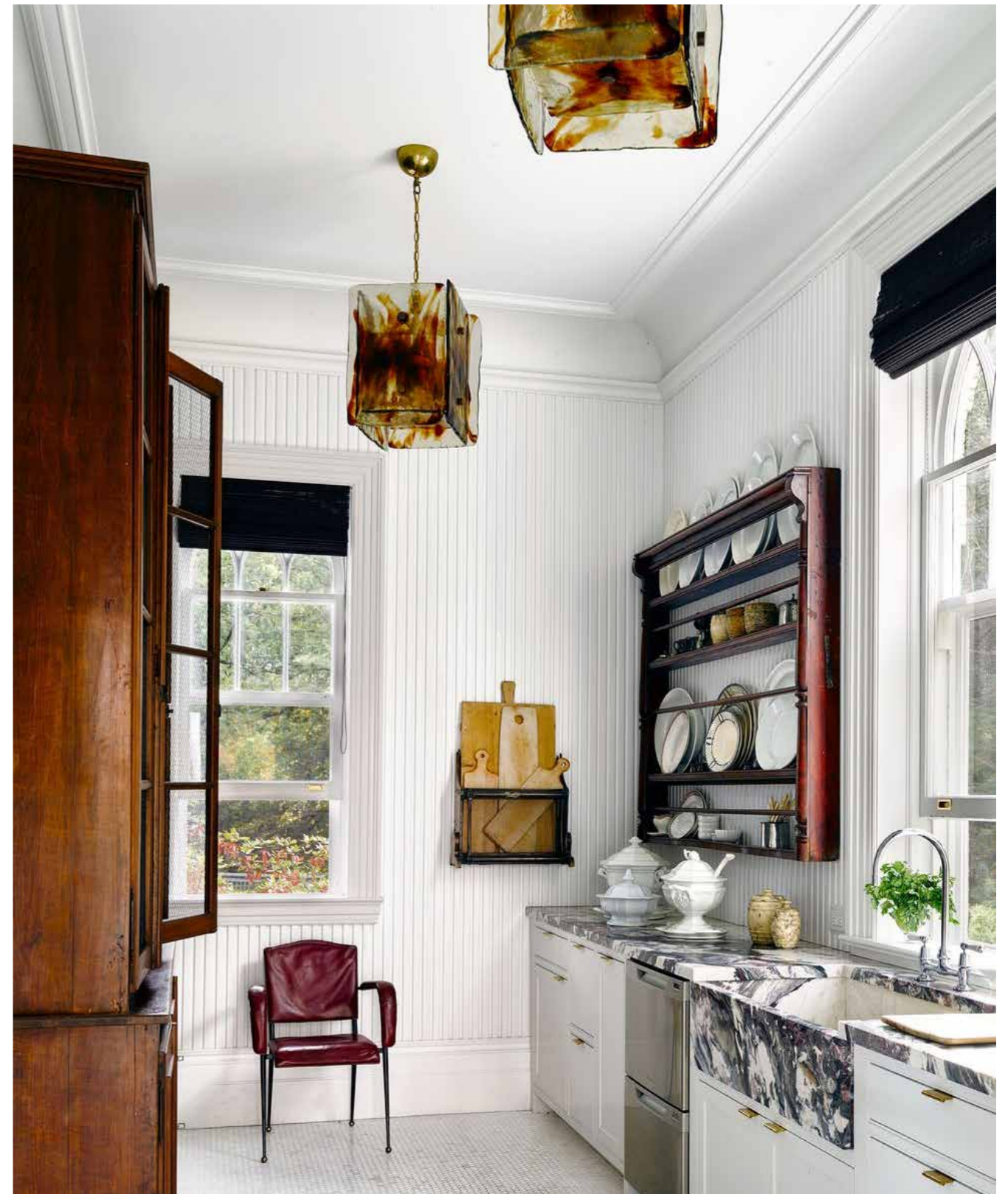
The kitchen island and counters in this New York home are topped with a Caesarstone surface, the Bertioia barstools are by Knoll, and the 1950s pendants are Italian; the refrigerator is by Thermador, and the sink by Elkay has Rohl fittings.





**WHITE  
MARMOLEUM  
KITCHEN**

The kitchen counters in a Beverly Hills cottage are quartzite, the cabinetry is custom made, and the flooring is Marmoleum.



**WHITE  
SCULPTURAL  
KITCHEN**

The kitchen counters and sink in Michael Bruno's Tuxedo Park home are custom made, and the dishwasher is by Fisher & Paykel.



## WHITE RANCH KITCHEN

Photographer William Abranowicz's Westchester ranch features Thonet bar chairs and a custom wooden table—along with sparkling white walls and milk glass-lined cabinets.



## WHITE SIDE KITCHEN

Bertoia side chairs surround a Saarinen table in the kitchen of Lisa Pomerantz's New York home; the Akari light sculpture is by Isamu Noguchi, the candlesticks are by Ted Muehling, the cabinetry is custom-made, and the Tara sink fittings are by Dornbracht.



## WHITE STEEL KITCHEN

Pendants from a Czechoslovakian factory and 1940s stools by Warren McArthur in the kitchen of a New York townhouse; the oven is by Wolf, the floor is lined with Corten steel tiles, and the staircase is suspended from cable supports.



## RUSTIC WHITE KITCHEN

Sure, you may not have the luxury of the centuries-old brick walls just made for an Aga stove, but it shows just how well the rough-hewn look can work in small spaces. The oven is used for cooking and as the ground-floor radiator; the York stone flooring is original to the house.

ARCHITECTURE

visually inspired.

# TREETHOUSE













76 INSPIRED