

# MAHALLATI

INTERIOR DESIGN

**VOL.**  
**016**



**INSPIRATION  
BOOK**

A BOOK OF MIXED INTERIOR DESIGN  
REFERENCES. NOT FOR SALE -  
INTERNAL USE ONLY

**OCTOBER 2016**

Social workers the craftiest  
co-working spaces around the world

London Design Festival  
2016 in pictures

# TAKE YOUR TIME AND BE INSPIRED.

From: **MAHALLATI** *an interior design company*

---

To:

---

Complex Kunti, Jl. Raya Kunti 2, No. 67,  
Kerobokan, Kuta - Indonesia. 80361

Ph. +62 361 7122 488

Email: [info@mhltd.com](mailto:info@mhltd.com) | Website: [www.mahallatidesign.com](http://www.mahallatidesign.com)

---

Why do we print this book? Here are some of advantages having a printed book.

Printed books • Printed books revolutionized the world nearly 600 years ago, and since then they have influenced every part of the world, specifically in culture and science. They gave people chance to share their ideas and thoughts with the whole world.

Advantages of printed books • No need for an e-reading device • No batteries needed – the only thing you need is book and you can start enjoying whatever the book has to offer you. • Understandability – you can put marks and take notes so that you can easily understand what writer wants to say  
Tangibility – choosing printed book is opting for prolonged existence and tangibility. It has ability to be seen forever on your shelf with other books. • It's for everyone – even the non-computer literate readers will find no worries with printed books when they want to read. (quoted from: Marina Hajduković)

*"We* are so  
busying measuring  
public opinion that  
we forget we can  
mold it. We are so  
busy listening to  
statistics we forget  
we can create

*them."*

”

BILL BERNBACH

06 - 33

LONDON DESIGN FESTIVAL 2016:  
IN PICTURES



52 - 55

COLORFUL OFFICE RENOVATION  
BY GHISLAINE VIÑAS



VOL.  
016

# CON-



56 - 61

NUTRITION FOR YOUR IDEAS



34 - 51

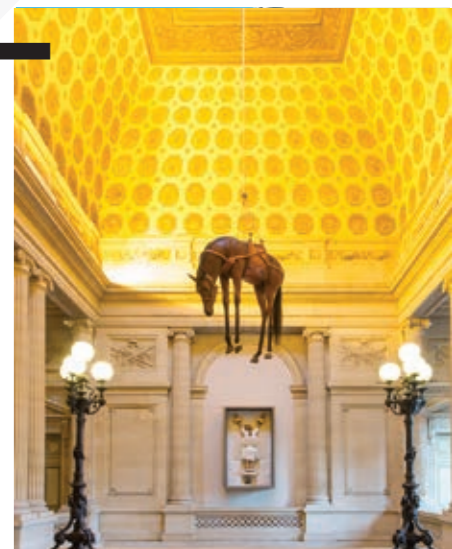
SOCIAL WORKERS: THE CRAFTIEST  
CO-WORKING SPACES AROUND THE  
WORLD



# TENT

62 - 67

INSPIRED



# LONDON DESIGN FESTIVAL 2016: IN PICTURES

**A**s London Design Festival (17–25 September) unfolds with a blockbuster edition, Team Wallpaper\* hits the ground running to bring you the best highlights from the festival's Landmark Projects and newly minted design districts. Not to mention the rousing exhibitions, eye-popping installations and glittering events from all across the English capital, too.



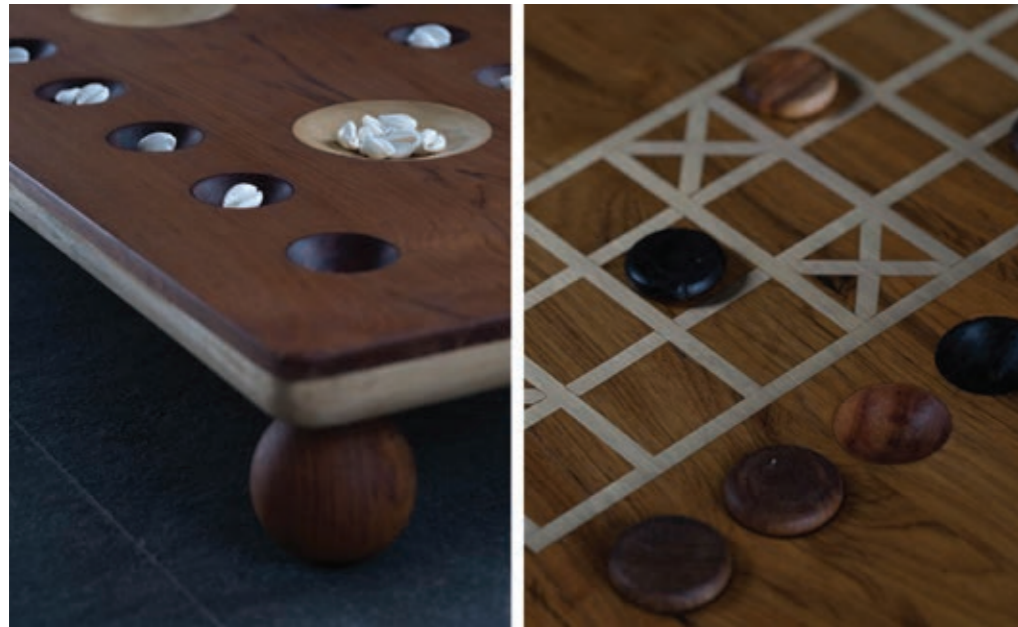
1/48

Uruguayan design had a moment in the spotlight at Design Junction. In particular, MUAR diseño worked with different silhouettes for its furniture pieces, which included playful bathroom wall shelving (pictured left), and a smart coffee table that stands on sleek copper legs (right)

2/48

Indian design craft was celebrated at the 'This is India' exhibition at London Design Fair. Included in the mix was a roster of brands that have never shown outside of the region – including Cobalt, which presented pure yet abstract tableware in copper





3/48

Elsewhere, geometrical wood and brass board games by Surat-based Shed studio stood out. Its organic work pairs intricate graphic with the existing functions of the games



4/48

New York-based wallpaper brand Calico showed their newest 'Satori' and 'Cirrus' collections at the new Sé showroom on Fulham Road, in delectable metallic finishes. Watch the dynamic process involved in making the 'Satori' collection above...

5/48

British designer Bethan Gray presented a geometric new collection at Design Junction in brass and wood. 'Shamsian' is inspired by Omani architecture and includes patterned cabinets and tables in striking shades



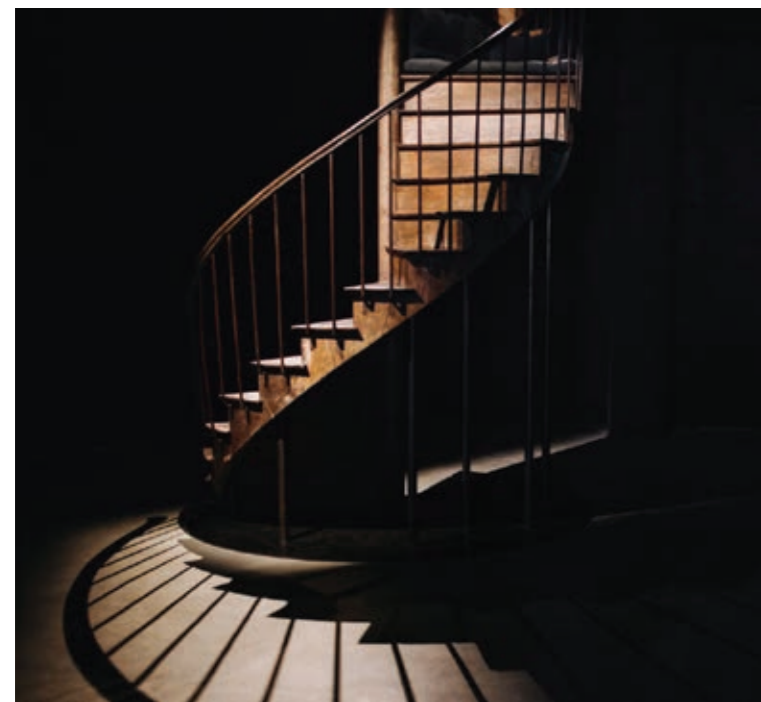
6/48

The brass etchings stand out on the models, evoking the range's warm cultural influences

---

## 7/48

Fashion and design collided at the The New Craftsman and Burberry's Makers House collaboration – a hub for artisans to show their dexterity. An assortment of activities, experimentations and installations celebrated the world of British craft



---

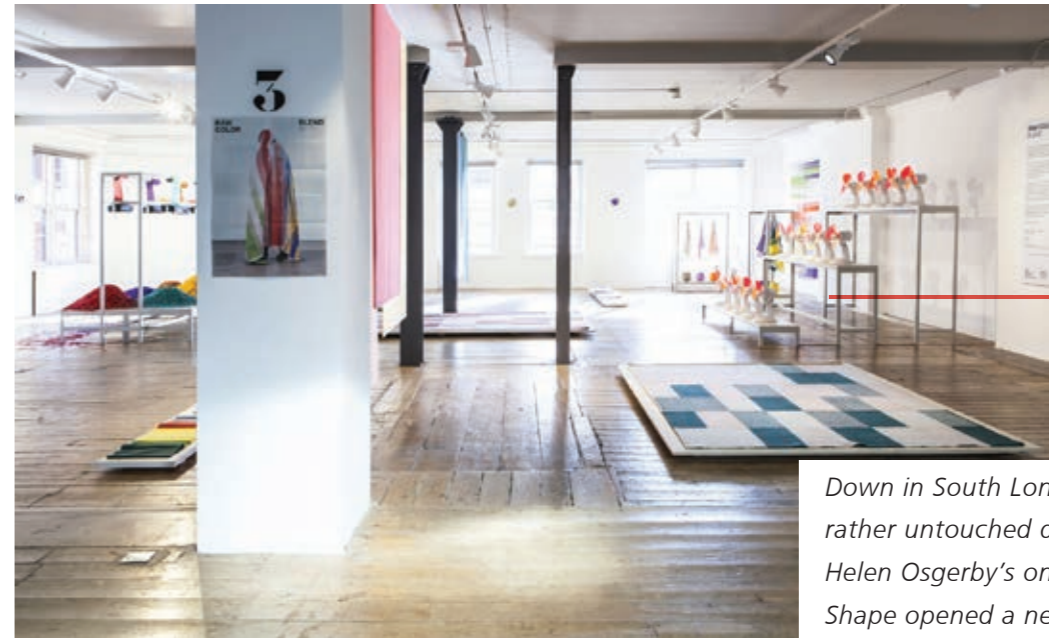
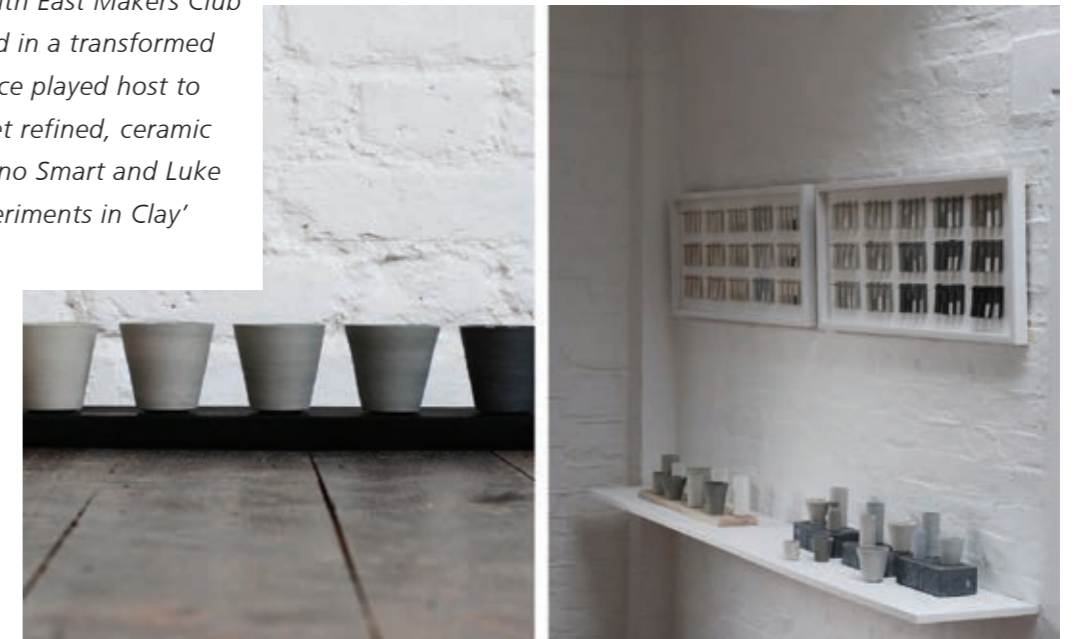
## 8/48

The brass etchings stand out on the models, evoking the range's warm cultural influences

---

## 9/48

Down in South London – until now a rather untouched design location – Helen Osgerby's online brand Simple Shape opened a new studio as part of the South East Makers Club district. Housed in a transformed stable, the space played host to two diverse, yet refined, ceramic practices by Jono Smart and Luke Eastop in 'Experiments in Clay'



---

## 10/48

Down in South London – until now a rather untouched design location – Helen Osgerby's online brand Simple Shape opened a new studio as part of the South East Makers Club district. Housed in a transformed stable, the space played host to two diverse, yet refined, ceramic practices by Jono Smart and Luke Eastop in 'Experiments in Clay'



## 11/48

Inviting visitors into the space, 'Chromatology' comprises a shredded paper shower (pictured left). Meanwhile, 'The Fans' mixes colour with movement (right)

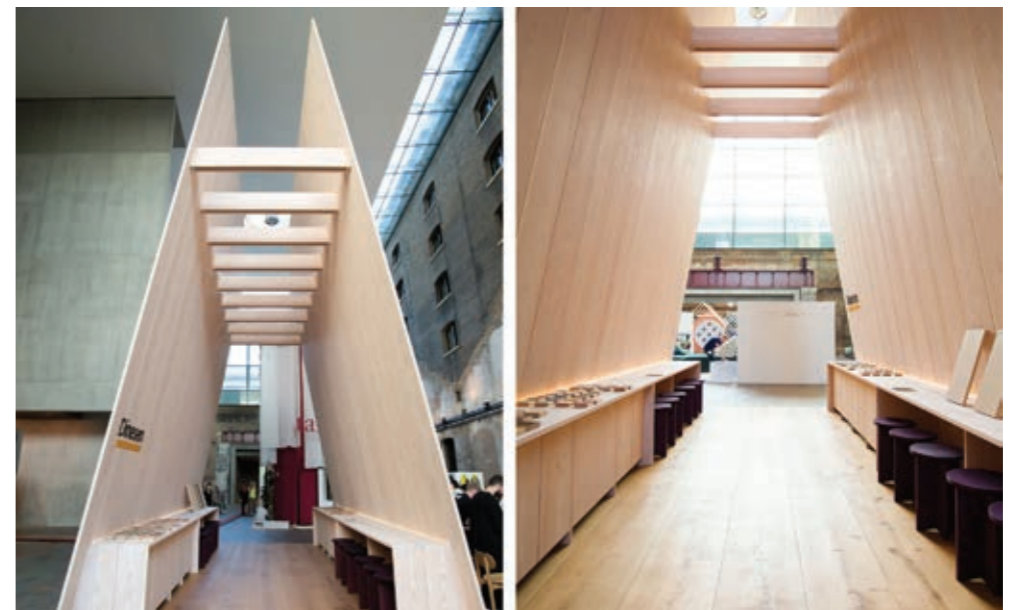


## 12/48

Following a launch at ICFF earlier this year, Anabela Chan's jewellery-inspired textile range for Bernhardt Design took residence at her Ham Yard retail store. The sculptural forms took the shape of playful poufs for the installation, in a mix of cotton, rayon and nylon

## 13/48

In an inaugural collaboration, four British designers were connected with Trentino-based manufactures, harnessing their unique techniques and crafting skills. Pedretti Graniti and Max Lamb created the 'Campione' chair, artistically channelling an abstract and sculptural aesthetic



## 14/48

Taking centre stage at Design Junction's new King's Cross hub was Michael Sodeau's 'Timber Tent' for Dinesen. The towering structure was constructed in the Danish flooring brand's Douglas and HeartOak planks, enclosing visitors and playing with light via a ceiling vista

## 15/48

Releasing their playful, minimal new collection at Form & Seek's London Design Fair stand was DAY Studio. Clever bottle openers and serving platters were included in the mix, in an assortment of primary lacquered hues



## 16/48

Always a highlight at Tent (now part of London Design Fair), the 100% Norway show returned with a roster of hot new Nordic talent. The collection – curated by Max Fraser and displayed by Hunting & Narud – includes lacquered copper and patinated lights by Fimbul (pictured left), and boisterous anodised aluminium vessels by Kim Thomé (right)



## 17/48

Over in Chelsea, Boffi played host to the poetic lights of Greek designer Michael Anastassiades in a bespoke installation. Celebrating Boffi's newest storage system, the elegant mobile chandeliers stood out among the masculine kitchen collection, with their sweeping curves and satin brass finishes

## 18/48

The third instalment of Perrier-Jouët's 'L'Eden' series (following Miami and Tokyo), this Soho space is part champagne bar, part lounge and all immersive design and lifestyle experience. The bar was concocted by French designer Noé Duchaufour-Lawrance, inspired by art nouveau's approach to nature





## 19/48



Holly Hunt's Mayfair outpost celebrated a limited collection by the late Vladimir Kagan. The tribute included a range of organic and curvaceous works by the designer, many of which are smartly upholstered in Holly Hunt fabric

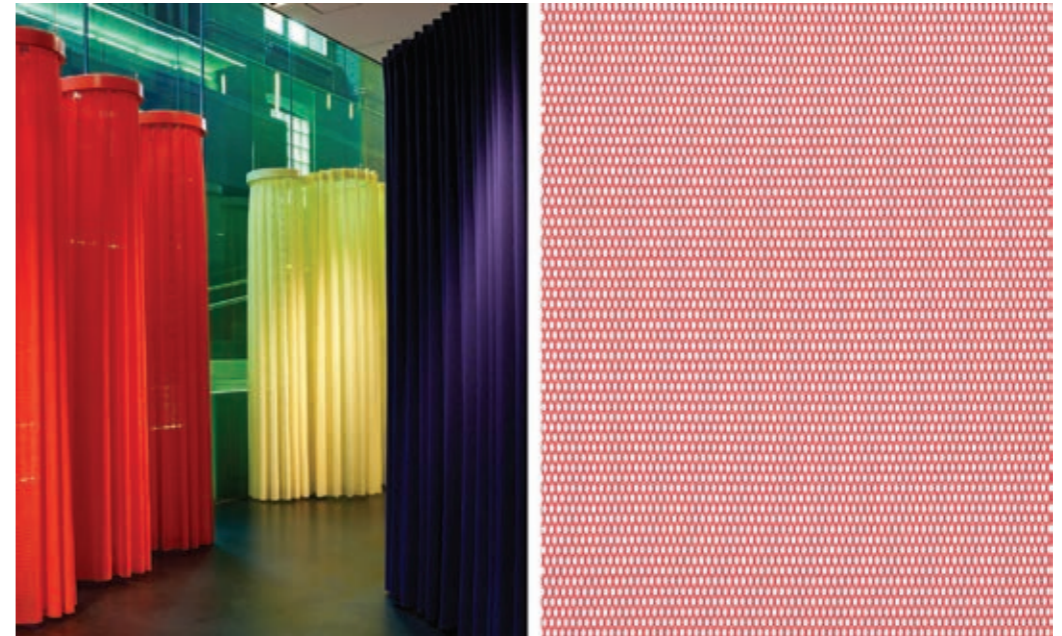
## 20/48



Included in the show was Kagan's 'Barrel' chair (pictured left), and his 'Contour' low back lounge chair and foot stool, upholstered in Holly Hunt leather

## 21/48

Anglo-Indian design duo Doshi Levien has launched a new set of curtain textiles for Danish stalwarts Kvadrat, along with an immersive installation to celebrate, titled 'Pilotis'. The captivating maze of curtains (pictured left) is set up in the brand's East London showroom, allowing the audience to visualise the collection's layered effects



## 22/48

Creating a kaleidoscopic world in monochrome is Lee Broom's *Opticality*. The British designer transformed his East London studio into a mirrored cove for his op art inspired lighting, launched earlier this year at Salone del Mobile. Photography: Luke Hayes



**23/48**

Creating a kaleidoscopic world in monochrome is Lee Broom's *Opticality*. The British designer transformed his East London studio into a mirrored cove for his op art inspired lighting, launched earlier this year at Salone del Mobile. Photography: Luke Hayes



**25/48**

*Ace Hotel London and Modern Design Review* are back for a second round of hotel design essentials. Highlights include an anodised soap dish by Studio Silo, a gambeson technique quilt by Toogood, and Patterny's playful gradient climbing wall (pictured). Photography: Jorn Tomter



**24/48**

Releasing the 'Series Four' furniture collection at Design Junction, Another Country continues to anchor its position as a British heritage brand. The new collection has an architectural modernist feel, with Rietveld-inspired leg frames for a strong look. The set includes seating, tables and a second daybed (pictured)



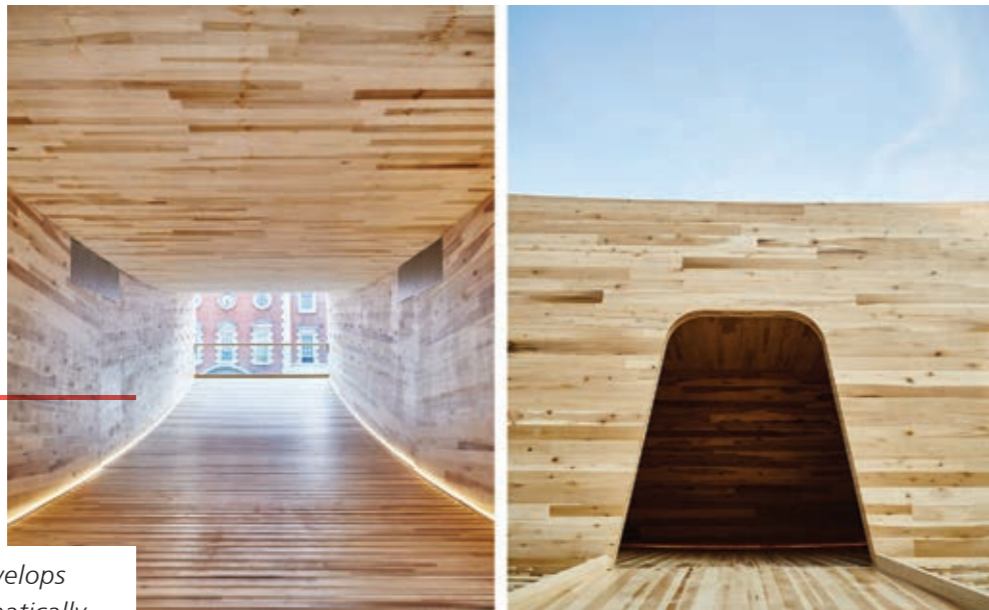
**26/48**

On view at 100% Design is this year's shortlist for the Wood Awards. Included in the mix is student Jan Waterston's elegant 'Velo' chair. The hand-sculpted piece takes its cues from the curves of a bicycle that can only be achieved through the flexible qualities of ash



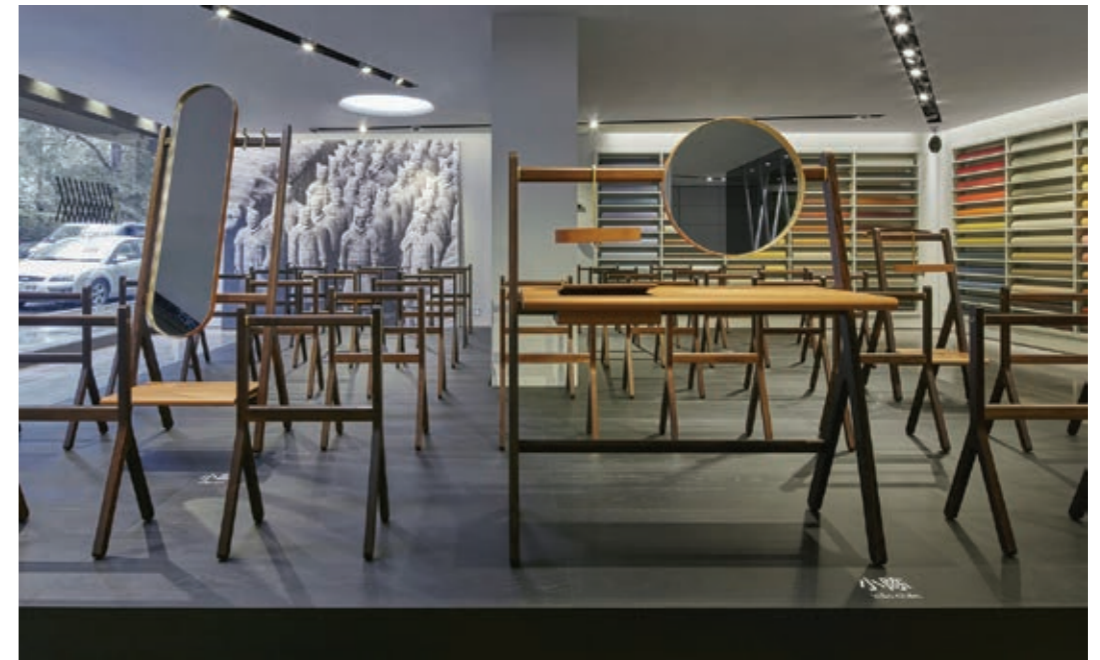
26/48

The American Hardwood Export Council and Alison Brook's mighty seesaw of wood is taking over the Chelsea College of Arts' courtyard. Created in cross-laminated tulipwood, the curvaceous structure – dubbed 'The Smile' – features 20 tons of steel counterweights to keep the two wings motionless and high up in the air. Photography: Dav Stewart



28/48

Inside, 'The Smile' envelops visitors with two dramatically different views: one that frames green trees, the other of the College's Georgian architecture. Photography: Dav Stewart



29/48

Neri & Hu's 2016 'Ren' collection for Poltrona Frau is on display at the latter's Fulham showroom. Titled 'Ren Evolution', the installation explores the Chinese duo's studies into domestic throughways. It features a roster of simple standalone leather and walnut pieces including a free-standing mirror coat rack and console table



**30/48**

The recliner has been given a bevy of makeovers at Natuzzi Italia. Bringing a playful display to the windows of its Tottenham Court Road showroom, Patternity has splattered a monochrome marble on the model (pictured left), while Camille Walala has taken her graphic pop-coloured aesthetic and invited the audience to sticker on their own interpretation of the style (right)



**31/48**

SCP hosted new versions of British designer Reiko Kaneko's 'Nami' lights. Transforming their original minimalist textile form, Kaneko has added brass and steel to the mix, creating abstract graphic silhouettes



**32/48**

Kaneko's craft also featured at her exhibition 'All that is broken is not lost' at Elementary Store. The east London space presented her unique bone China and terracotta ceramics. These channel an aesthetic of flaws and breakages in a nod to the Japanese philosophy of wabi-sabi. Jagged edges, a lack of symmetry and imperfect colouring are embraced and refined with the use of lacquer and gold

---

## 33/48



Located across Shoreditch, architect Asif Khan has realised three architectural urban sanctuaries for car brand MINI. Created for individuals to find repose away from their concrete city surrounds, the trio of hubs include a green jungle room by horticulturalist Jin Ahn, a peaceful interactive workspace and an elevated cove of seclusion.

Over at the Charles Square hub, Wallpaper\* will be hosting 'The Living Image Lab', a workshop with acclaimed photographer Jamie McGregor Smith on capturing refined images of the city's architecture. Held on 20 September, the event will comprise three sessions between 12pm and 8pm. For more information, visit MINI's website

---

## 34/48



Located across Shoreditch, architect Asif Khan has realised three architectural urban sanctuaries for car brand MINI. Created for individuals to find repose away from their concrete city surrounds, the trio of hubs include a green jungle room by horticulturalist Jin Ahn, a peaceful interactive workspace and an elevated cove of seclusion.



---

## 35/48

For the Design Museum shop window's first designer takeover, Bethan Laura Wood has collaborated with Italian brand Bitossi Ceramiche to create six azure-hued contemporary vases. The installation is imbued with the British designer's evocative flair with eclectic flora embellishing each of the etched vessels. Photography: Luke Hayes

## 37/48

The oversized, patterned pieces nod to the traditional blue Bitossi aesthetic.

Photography: Luke Hayes



## 36/48

It isn't everyday you turn 20, so here at Wallpaper\* we're taking every chance we can to celebrate two decades of history-making, era-defining us. Part of those festivities include 'Construction Sight', an exhibition of legendary fashion photographer Koto Bolofo's first foray into architectural photography at Cork Street Galleries. First featured in our landmark anniversary issue, the photographs capture the transformation of the new Design Museum ahead of its grand opening in November. The same images will go on to appear in the vast atrium of the new museum when it opens to the public. Photography: Koto Bolofo



## 38/48

Mathieu Lehanneur is giving marble a new context with his V&A showcase. Creating an enlarged version of his 'liquid marble' sculptures, he embarks on recreating the movement of the ocean with his 4.5 metre long structure – the magnificent polished piece glistening like the sea

## 39/48

'Love!' 'Complex!' 'Nasty!' Such are the standout signs at Studio Myerscough's playful, kinetic installation within the luxury surrounds of the Bulgari Hotel. Created in response to the Studio's 'Crowdsourced Product Wall' project – set to be revealed at the new Design Museum – visitors can sit in the abstract patterned swings enclosed in the acid yellow frame and manoeuvre the mismatched objects protruding from it



## 40/48

Contemporary Scottish talents are emerging at the V&A in the 'Northern Lights' exhibition. Representing the forthcoming Dundee outpost of the museum (opening in 2018), highlights include impressive curvaceous wood swings from Edinburgh-based Isabelle Moore



## 41/48

Scottish wood work is also celebrated in Angus Ross' furniture. Working from his 19th-century studio in Perthshire, the oak pieces double as sculpture, with elegant bending and sophisticated angles



## 42/48

Bert & May teamed up with independent London design label Darkroom to create 'Split Shift', a fabric and encaustic tile collection that is as bold as it is graphic. The iteration takes on a myriad of shapes, depending on how the tiles are arranged. A celebration of three graphic shapes, the tiles can form triangles, circles or squares; or a playful mix of something in-between. Rendered in a signature monochrome palette, a flash of blue adds colour and depth



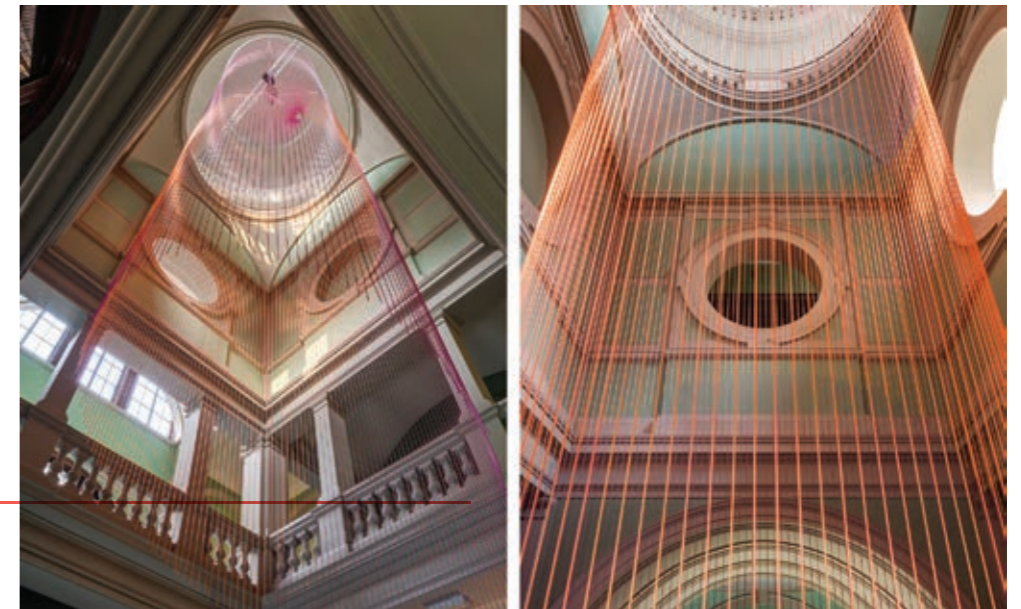
**43/48**

Glass mosaic brand Bisazza launched its new 'WOOD' collection additions by Studio Job. Described by Nynke Tynagel as 'a contemporary approach to wooden flooring', 'WOOD' is an eccentric take on the classic parquet, featuring vibrant colours, 3D patterns and geometric shapes



**44/48**

Brutal meets beautiful with an enchanting installation at the Barbican. Omer Arbel, of Canadian lighting brand Bocci, created an abstract aluminium forest that floats above the foyer. Bought together with mesh wire, the sculpture, entitled 44, accentuates the concrete surrounds of the creative hub with its glistening panorama



**45/48**

Pouring down a grand six-floor stairwell in the west wing of the V&A is Studio Glithero's installation The Green Room, featuring a shower of neon cords. Created in collaboration with watch brand Panerai, the immersive and kinetic piece moves with a motor, resemble the revolving action of a clock





## 46/48

Viaduct's exhibition offering for this year was stripped back. Titled 'The Bare Minimum', each piece in the installation was chosen for its no-fuss style – whether a lightweight Gio Ponti chair, or poetic Michael Anastassiades lights, the sculptural forms sit together in simple synergy. Photography: Claire Gittins

## 47/48

The roster of pieces boast a mix of materials, as seen in Muller Van Severen's powder-coated steel chairs (pictured left), and a solid walnut e15 table (right). Photography: Claire Gittins



## 47/48

Upstairs in the Clerkenwell space, Studiomama displayed its latest innovative project that recreates a home inside a 13 sq m space. Keeping in line with the minimalist theme, the plywood set-up mimics an Islington home due to open in October. In the compact area, Nina Tolstrup and Jack Mama have installed nifty storage solutions, sleek lounging areas and a foldout bed. Photography: Claire Gittins

# Social workers: the craftiest co-working spaces around the world



Canopy, San Francisco, US

Designer: Yves Béhar and Amir Mortazavi

Completed: October 2016

*Frustrated with the idea of commuting to a business park or downtown to an office, Yves Béhar, Amir Mortazavi and Steve Mohebi decided to revolutionise the workspace with Canopy, a co-working hub located right in the heart of Pacific Heights on San Francisco's Fillmore Street. Elevated and refined, Canopy will have a sophisticated membership program and concierge-style amenities*

*'Canopy is designed as a pioneering space, where classic radical designs of the 1970s such as Joe Colombo, Don Chadwick and Alexander Girard are mixed with today's most collaborative and ergonomic furniture from Herman Miller, Flos, Tylko and others,' says Behar. 'In conceiving the space with Amir Mortazavi, we were intent on designing inspirational moments in the space, such as the lounge or kitchen, and also bringing together an eclectic mix of classic and current designs that are high concept and high quality.'*



**2193 Fillmore Street, San Francisco, CA  
94115**

*Photography: Joe Fletcher*

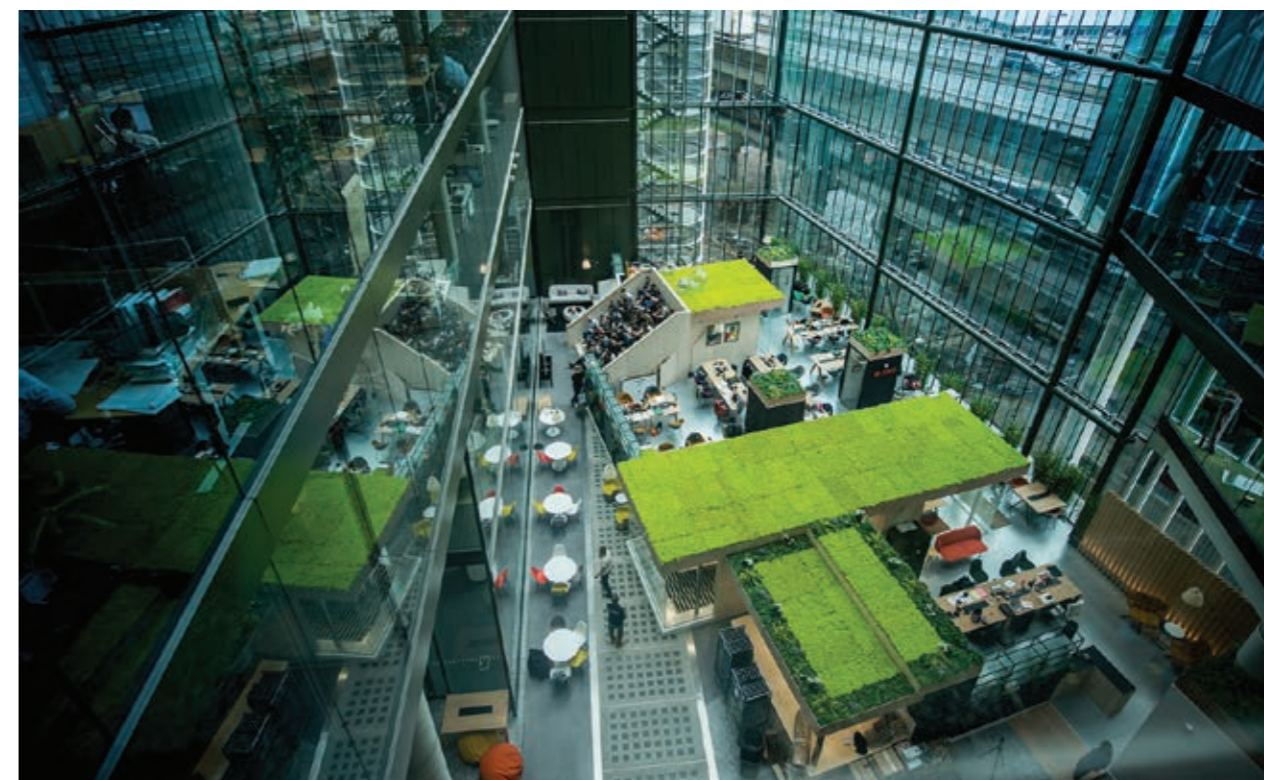
Central Working, London, UK

Completed: September 2016

Now, the building's lobby – previously 'wasted space' occupied solely by a reception desk – buzzes with activity as hundreds of companies work alongside each other. With commercial rents in the area rising – Paddington's position on the incoming Crossrail line and transport links to Heathrow have led to the area becoming one of the hottest destinations for tech businesses – Central Working demonstrates the potential of transforming a previously forgotten space into a thriving, beautiful office environment



Incorporated in previously 'dead' space within the atrium of 2 Kingdom Street, Central Working recently opened a new club, with start-up accelerator Techstars and the Mayor of London's promotional company both taking spaces in the new facility. Building on the company's previous hubs around London, this one not only invites growing businesses to work side-by-side with global businesses, but is also a new development for West London as it appeals to the local entrepreneurial scene.



Central Working Paddington's opening coincides with the announcement that Central Working City, also launched in partnership with British Land, will be expanding to five floors, providing London's growing business community with a larger footprint in the Square Mile. James Layfield, CEO of Central Working, says: 'This area of London, shaped by British Land and operated by Central Working, provides a vibrant mix of big corporates and entrepreneurs to drive innovation and business growth. With two leading Tech City influencers now in residence, Central Working Paddington will help the capital's booming tech scene spread out from the Silicon Roundabout and truly flourish in West London'

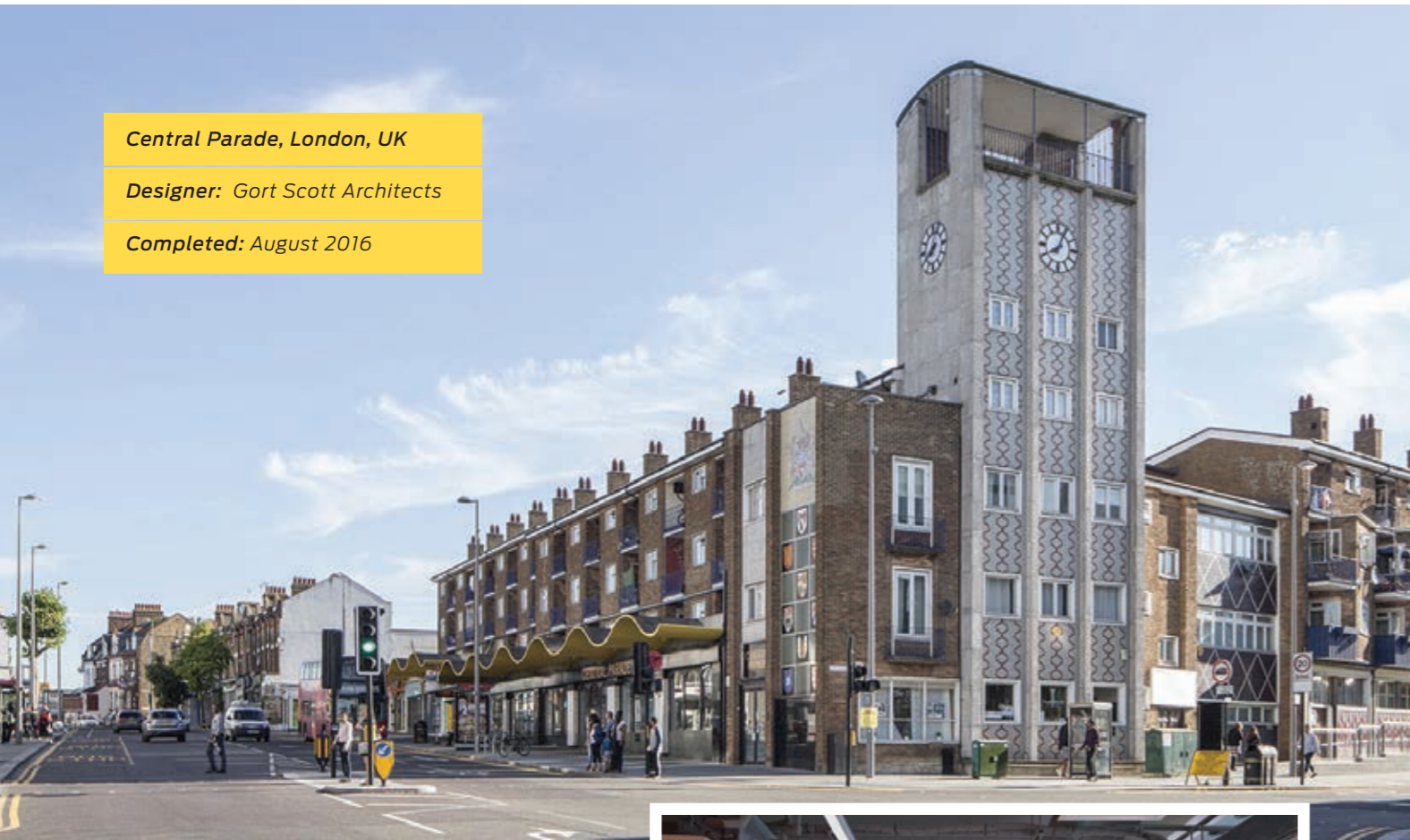
2 Kingdom Street, London W2 6BD

Writer: Alix Biehler

Central Parade, London, UK

Designer: Gort Scott Architects

Completed: August 2016



'We stripped back the linings of the outdated council one-stop shop; the lowered ceilings, carpets, partitioned desks etc, to create a generous, robust hall-like space,' says Jay Gort, director of Gort Scott, who also developed a range of bespoke furniture for the project. 'Simultaneously, we ensured that the façades of this landmark building were sensitively updated to re-establish the building's positive contribution to the streetscape. We worked closely with graphic designers Polimekanos to develop a graphic identity for the project, which was inspired by the original decorative façade tiles'



While Gort Scott has previously completed a number of projects in Waltham Forest – two separate urban design frameworks for Blackhorse Lane and the town centre, the regeneration of Wood Street Indoor Market and a strategy for public realm interventions in the Blackhorse Lane area – the borough has a number of new projects in the works as part of its continued regeneration. These include a new Creative Industries Zone and a Housing Zone in Blackhorse Lane, and the redevelopment of St James Street

Last year, following the neighbourhood's transformation into one of the capital's most desirable areas – with a blossoming creative community to match – the London Borough of Waltham Forest commissioned the refurbishment of the Central Parade with funding help from the GLA. Opened this summer, the project has seen the former 1960s office building reborn as a new cultural and creative enterprise hub designed by young architectural practice Gort Scott. Open for two years while the long-term future of the site is decided upon, the Central Parade

is now home to 650 sq m of retail and co-working spaces with meeting rooms, flexible event and exhibition space, small 'maker' shops available for those who wish to pilot new products or services, and studio units for up to 50 independent creative businesses.

Church Hill, Walthamstow, London, E17

Writer: Ali Morris.

Photography: Dirk Lindner





*This translates into a studio that multi-tasks as a meeting room for 12, workshop space for 20, and presentation room for 30, and which, on Tuesday evenings, becomes a yoga studio; dedicated offices kitted-out in okoume timber desks, leather chairs and storage shelves finished in brass; a boardroom with reception area; unobtrusive rows of lockers; bathrooms with shower facilities; private phone booths; and kitchen*



*The Great Room, Singapore*

*Designer: Jaelle Ang*

*Completed: July 2016*

*Together with two other partners, Jaelle Ang's recent launch of The Great Room, Singapore's newest generation of flexible hot-desks, offices and meeting rooms, is a response to this new work paradigm. The idea for The Great Room came about because between a-third-to-half of all workers today are flexible and mobile says Ang. 'Increasingly, workers and companies are realising they need to use a wide range and typology of work spaces to accommodate this increasingly diverse workforce and the*

*different expectations of what work is, and where and when that work should happen. The best performers are measured by the value they bring into the business, and this value is no longer created by sitting for 40 hours in a traditional fixed office in front of the desktop.'*

**1 George Street, #10-01, Singapore**

**Writer: Daven Wu**

*Where The Great Room departs from the flatness of the ubiquitous serviced office comes courtesy of the designers' bent for warm, handsome furnishings that have a very human quality. Full advantage is taken of the floor-to-ceiling windows that wrap around the space and bring in both light and views of Singapore's CBD skyscrapers. Against this, the designers have layered handsome coffee table books on art and architecture, customised wall art, leather sofas, bell-jars of objets trouvés, plush velvets and fabric, stained timber floors and Tappeti rugs*

**Kwerk, Paris, France**

**Designer: Albert Angel**

**Completed: June 2016**

The 23,680 sq ft building is located in Paris' busiest business district, the eighth arrondissement. It is the second Kwerk in the capital and is the brand's flagship space. Angel and Knights travel constantly between homes in Bali, New York and Jakarta. Kwerk's interior reflects these multicultural influences with an ambience that is part boutique hotel, part art gallery and includes a yoga studio



Congo-born architect Albert Angel and Franco-British entrepreneur Lawrence Knights have created Kwerk – a 24/7 co-working space in the centre of Paris. ‘How we work has evolved beyond recognition,’ says Angel. ‘Isolation is the enemy of creativity.... We wanted to favour interactivity by creating a space with a collective consciousness.’ Kwerk is a double word play, riffing on the French pronunciation of ‘co-work’ and ‘quirk’ with a possible subconscious allusion to ‘twerk’ – either way, this is a seriously sexy workplace. Read more at <http://www.wallpaper.com/gallery/architecture/finest-design-led-co-working-offices-in-the-world#177398#oBSOpE0vu1eSg9wF.99>

44–46 rue de la Bienfaisance, Paris 75008

**Writer:** Jean Grogan.  
**Photography:** Benoit Florençon

Eight velvet-curtained confession booths tiled with coloured cork bricks provide confidentiality; while security is provided by the ‘Green Army’, knee-high stone statuettes imported from Papua New Guinea with fluorescent green camouflage by Angel

Spring Place, New York, US

Completed: June 2016



*It's hard to imagine life without Spring Place New York. Since opening its doors last September, the mammoth photographic studios, which occupy a former Verizon building in Tribeca, have since become a regular home to fashion shows, the Independent art fair, the Tribeca Film Festival and countless other photo shoots and events for brands across the gamut.*

*In June, the multidisciplinary space quietly unveiled the next phase of its overarching concept: a collaborative workspace and social membership club that promises to turn the entire venue into an innovative cultural hub.*

**6 St John's Lane, New York, NY 10013**

**Writer:** Pei-Ru Keh.

**Photography:** Adrian Gaut



*The co-working/member's club concept goes beyond just offering stylish work environs in an enviable zipcode. Spring Place does one better by providing a world-class concierge service (one recent coup includes procuring tickets for the musical Hamilton at short notice), production and editing suites, a reference library, private catering and tech support at the ready to overcome any problems. Together with beautifully designed boardrooms, executive suites, temporary showrooms and insulated conference call booths all spread over an entire floor of the building, Spring Place offers a forward-thinking selection of amenities in one very pretty package*



*Of course, it's no good to just focus on work. On a separate floor, Spring Place also operates an all-day dining restaurant, bar and lounge, which in turn comes with two private dining rooms for more reserved situations. A glamorous, sunken living room and a cosy, den-like music room (pictured) are available for performances, receptions, workshops, guest speakers and more. And the aspirations won't just stop there – locations in Los Angeles, Brooklyn, London, Paris and Milan are all looming on the horizon*

Atrium, London UK

Designer: Barr Gazetas

Completed: June 2016

Once regarded as London's epicentre of alternative fashion and music, Camden Town is hoping to form a new alliance with the capital's business communities with the addition of Interchange's new flagship space, the Atrium. Situated in the heart of Camden Stables – and the third property in the firm's portfolio of co-working office locations – the Atrium was designed by Barr Gazetas Architects, with interiors courtesy of Tom Dixon's Design Research Studio.

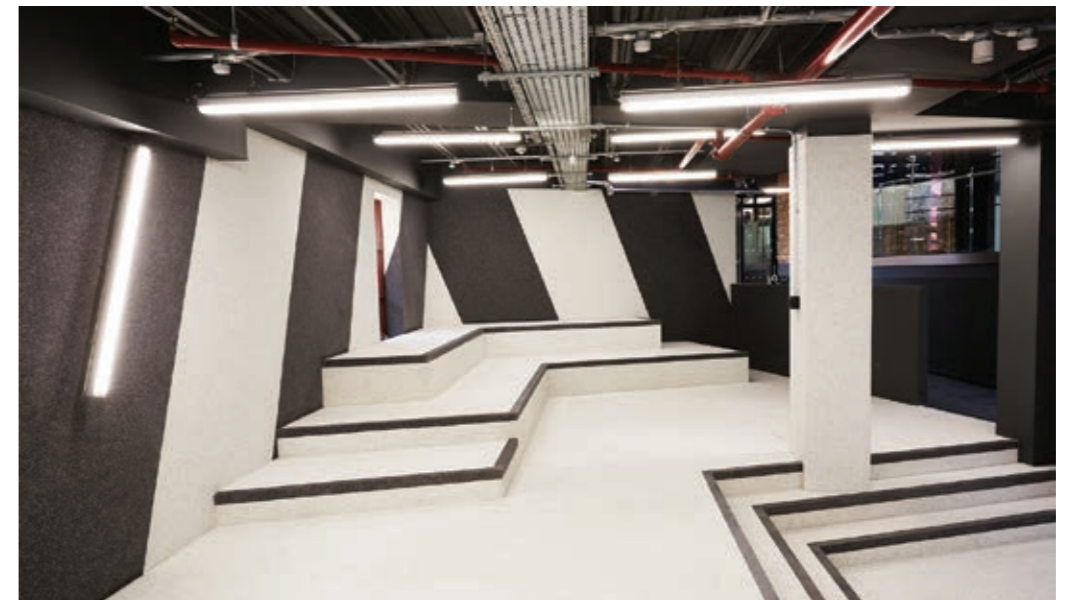
It seems that co-op working spaces quickly became the answer for flourishing businesses trying to find their feet, providing a desk, facilities and a network to nurture growth and innovation. But these co-working communities soon evolved and have now become pivotal hubs for even fully-fledged businesses wanting the flexibility and benefits that come with a shared office environment.

Stables Market, Chalk Farm Road, London, NW1 8AH

Writer: Sara Sturges



'Since the opening of our first Camden-based coworking space, Triangle, at the end of last year, Interchange has experienced high demand from both new and more established businesses and has had some fantastic tenants move in across a variety of sectors, including retail, healthcare, fintech and design,' explains Vanessa Butz, Interchange's managing director, reflecting on the Atrium's promising future



The new 84,000 sq ft complex offers up a wide range of facilities spread over four floors, with space intended to initiate communal productivity with its intricately designed floor plan and interior layout. Outfitted with Dixon's furnishings and fixtures, the Atrium includes an on-site restaurant and bar, vertical gardens, numerous roof terraces and a variety of relaxation areas to cater to its 600 work stations



NeueHouse, Los Angeles, US

Designer: Rockwell Group

Completed: December 2015

Once regarded as London's epicentre of alternative fashion and music, Camden Town is hoping to form a new alliance with the capital's business communities with the addition of Interchange's new flagship space, the Atrium. Situated in the heart of Camden Stables – and the third property in the firm's portfolio of co-working office locations – the Atrium was designed by Barr Gazetas Architects, with interiors courtesy of Tom Dixon's Design Research Studio.

It seems that co-op working spaces

quickly became the answer for flourishing businesses trying to find their feet, providing a desk, facilities and a network to nurture growth and innovation. But these co-working communities soon evolved and have now become pivotal hubs for even fully-fledged businesses wanting the flexibility and benefits that come with a shared office environment.

**Stables Market, Chalk Farm Road, London, NW1 8AH**

**Writer:** Sara Sturges



In addition to preserving period features, such as original staircases and elevator dials, the two firms added white marble accents and board-formed concrete walls to break up the austere space. Moroccan rugs, which are strewn casually, reference the way modernist architects furnished and added warmth to their homes



On the higher floors, beautifully composed office studio spaces are peppered with lounge areas and views of the Hollywood Hills and downtown LA. On the second floor, a library lounge decorated with vitrines filled with studio artifacts opens on to a sprawling terrace, where cabanas offer another work environment while making full use of the Californian climate. There's yet another terrace on the third floor, best suited for hosting events

*Soho Works, London, UK*

*Designer: Soho House & Co*

*Completed: December 2015*

*It's a key locus of the new freelance creative economy and, always sharp on the uptake, the Soho House group has now opened a new co-working concept, Soho Works. The group took vacant space in the Tea Building, home to Shoreditch House, a couple of years ago without any definite plans for it. When more space came up, a total of 16,000 sq ft, it decided to create a proper fully-serviced working environment for the modern mobile creative and for those looking for more permanent space.*

*Walk in on an average week day and, from bar through ping-pong tables-turned-work stations, through the restaurant and into the back lounge, everywhere there is the steely grey of opened laptops (always, but always, Macbooks), shoulders hunched, fingers tapping and faces gently uplifted by screens.*

**Tea Building, 56 Shoreditch High Street, London E1 6JJ**

**Writer: Nick Compton**

*Membership options include hot-desking, a permanent desk place or even a permanent office space for up to ten (though the single person offices, complete with hat stand, looks particularly tempting). There are also meeting rooms, a library, a lounge and cafe, as well as a kitchen for those who want to prepare their own food, printers, a photo-studio, post-production facilities, a fully tooled-up workshop if you fancy getting handy, 3D*



*printers, retro phone booths for intimate or professional phone conversations as well as high-speed internet access, tech support, postage and couriers. And all open 24/7. It also offers a series of professionally minded talks and one-to-one appointments with 'industry experts'*



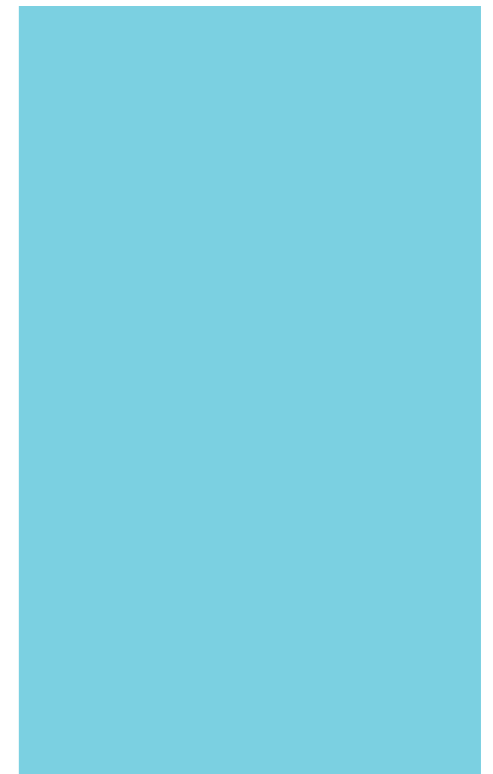
*A 24,000 sq ft Istanbul branch of Soho Works will open in five converted town houses in the Akaretler district next spring, while a 22,000 sq ft LA branch will open in a mid-century office building on Sunset Boulevard soon after. The group is also set to open a 40,000 sq ft Soho Works in Clerkenwell, complete with gym, cutting and screening rooms, in spring 2017 – with a similar-sized space, featuring a rooftop bar and restaurant, planned in the Fulton Market District of Chicago later that year. It is also looking for other London locations, as well as a space in Manchester and far beyond*

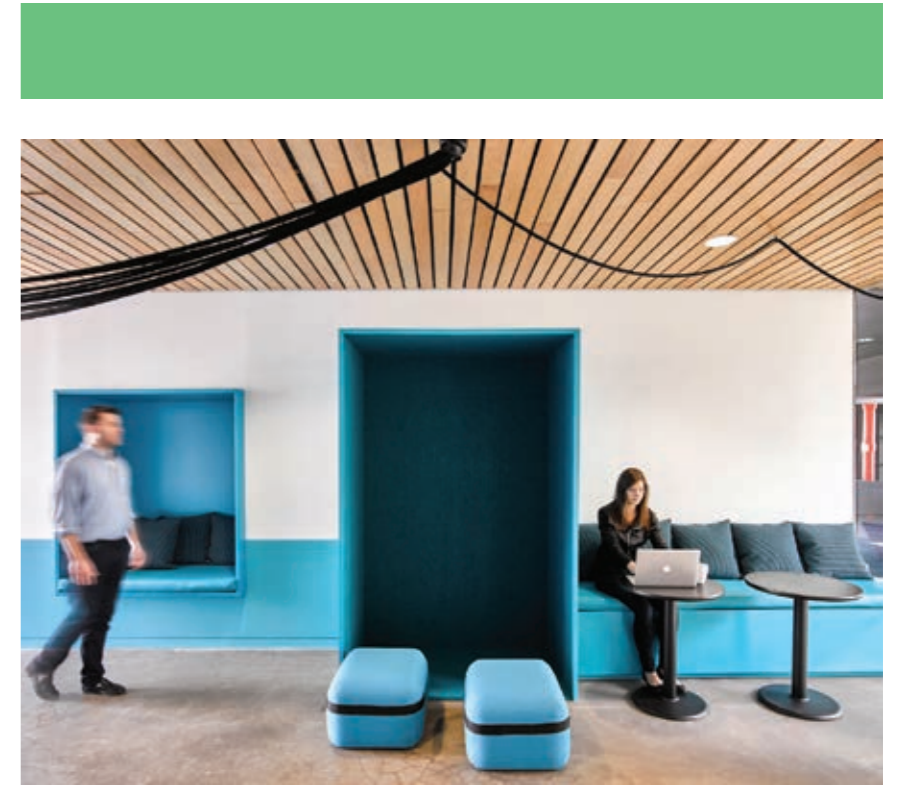
# COLORFUL OFFICE RENOVATION

BY GHISLAINE VIÑAS

**G**hislaine Viñas was tasked with outfitting the Manhattan offices of South African advertising firm Barrows in one of Soho's Art Deco buildings. Raised in South Africa, Viñas was the ideal person for the job allowing her to explore cultural references within a modern work

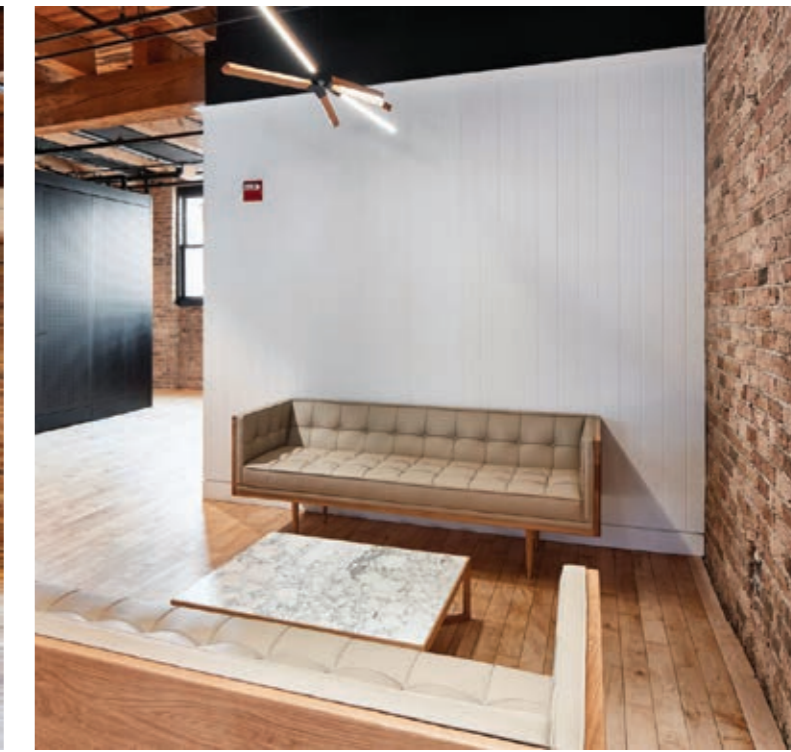
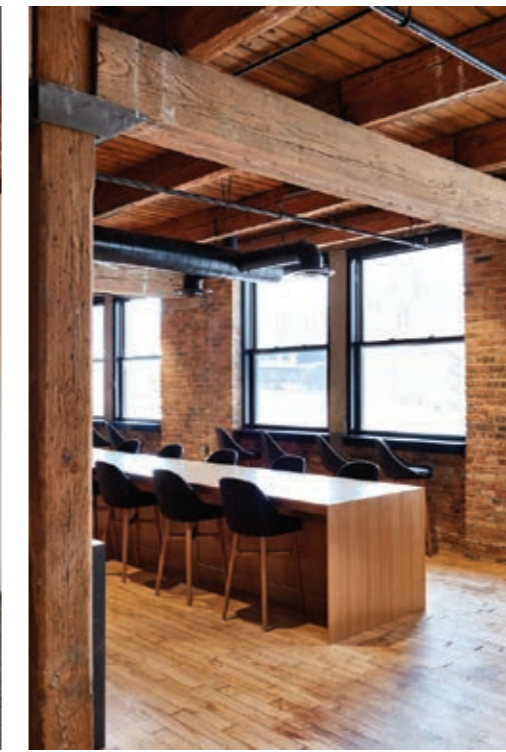
environment. Throughout the 2300-square-foot offices, you'll spot energetic patterns and bold colors, along with contemporary furniture pieces from brands like Viccarbe. Arik Levy's high-backed Platform sofa makes a strong statement in this gathering space, along with Patricia Urquiola and Victor Carrasco tables, all from Viccarbe.



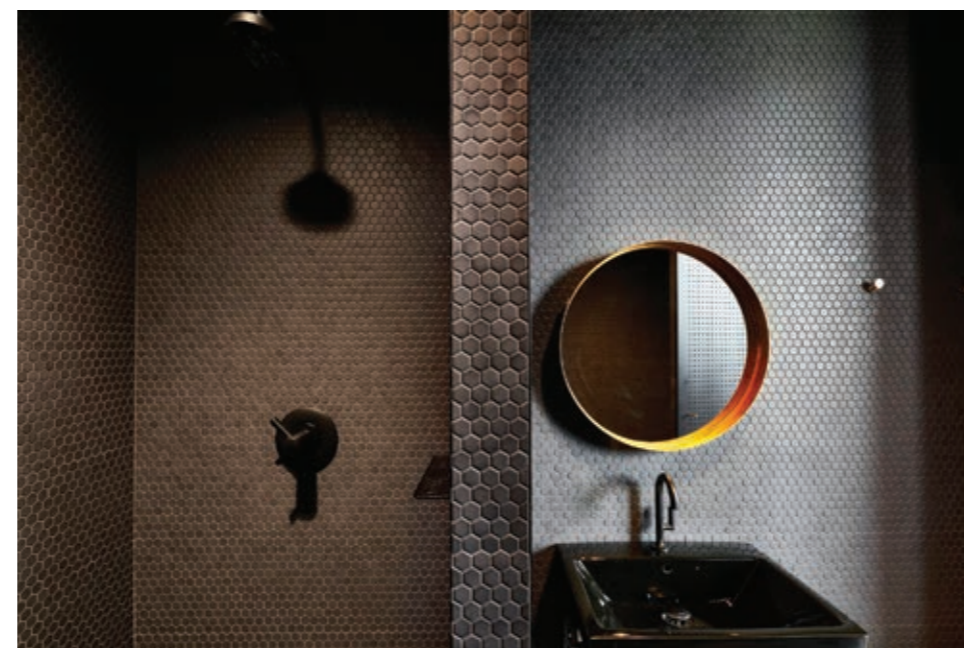
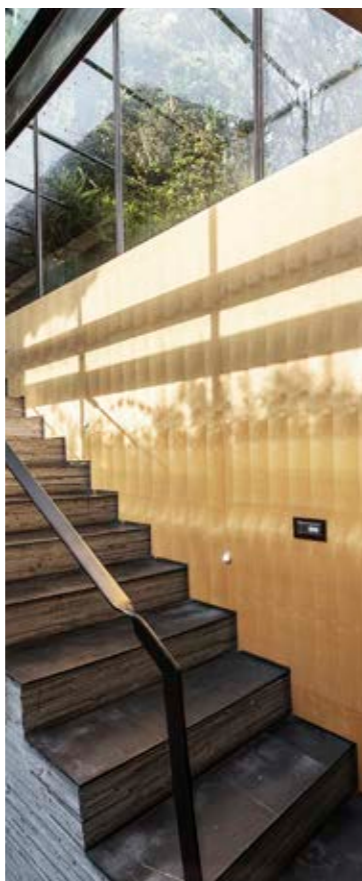
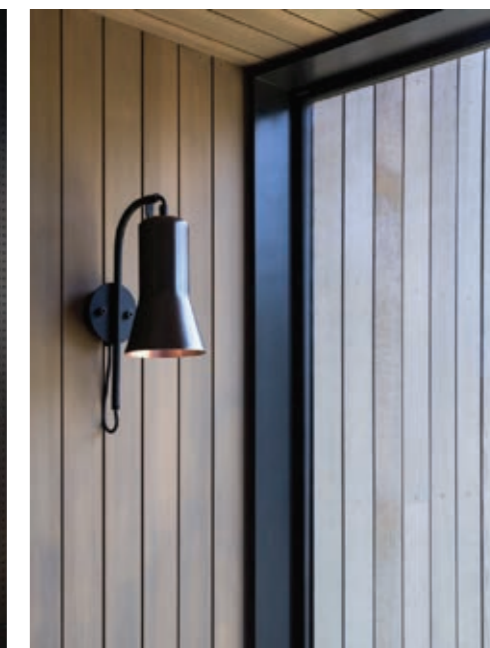
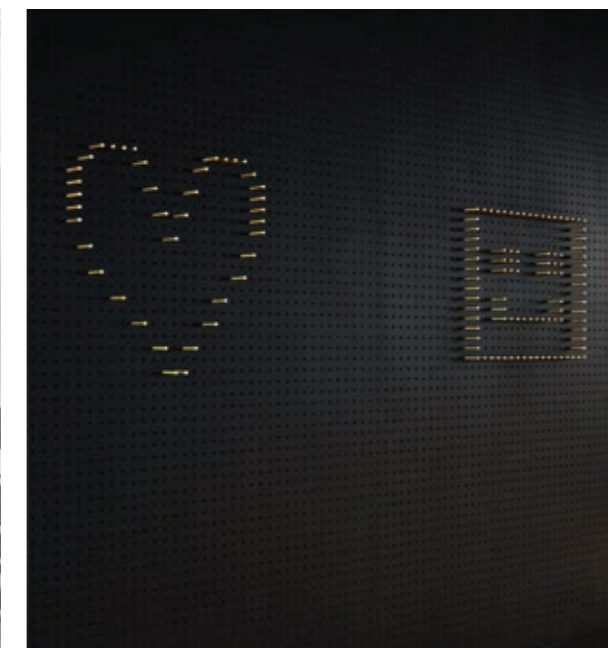


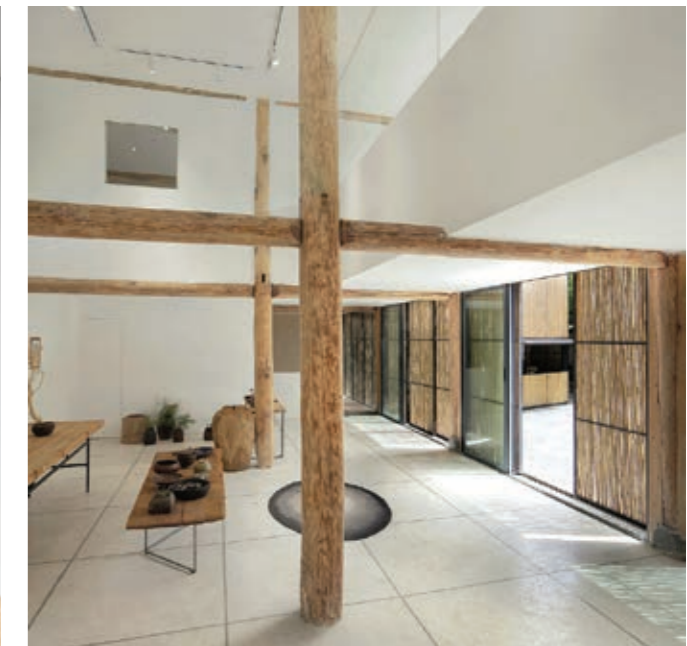
*The photorealistic, tropical wallpaper was designed by Viñas herself for Flavor Paper. It's the perfect backdrop for the stairwell and the mezzanine level.*

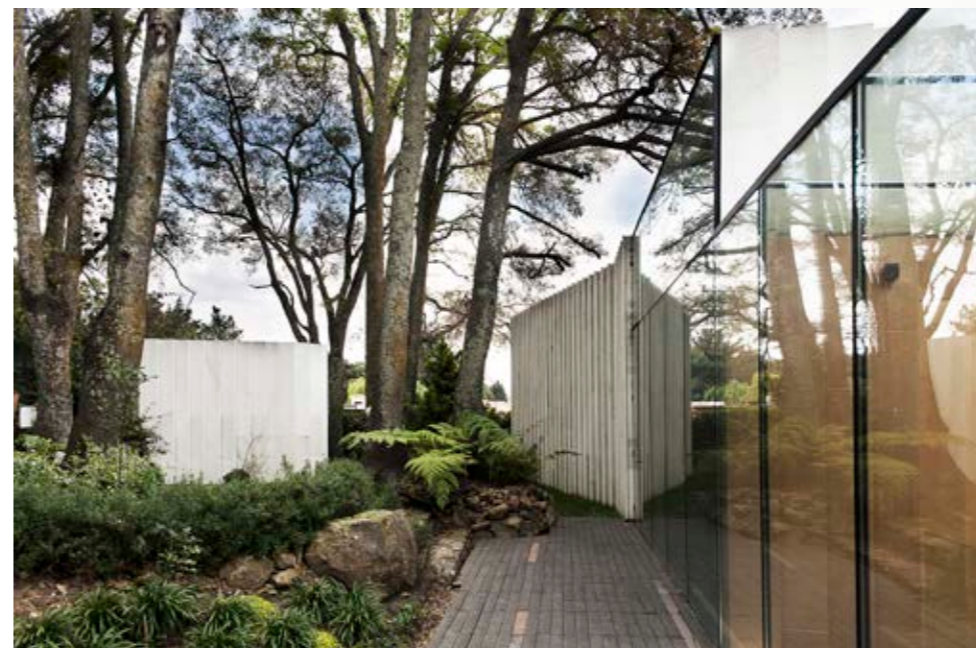
*You also see several Honken chairs from BLÅ STATION around the office.*

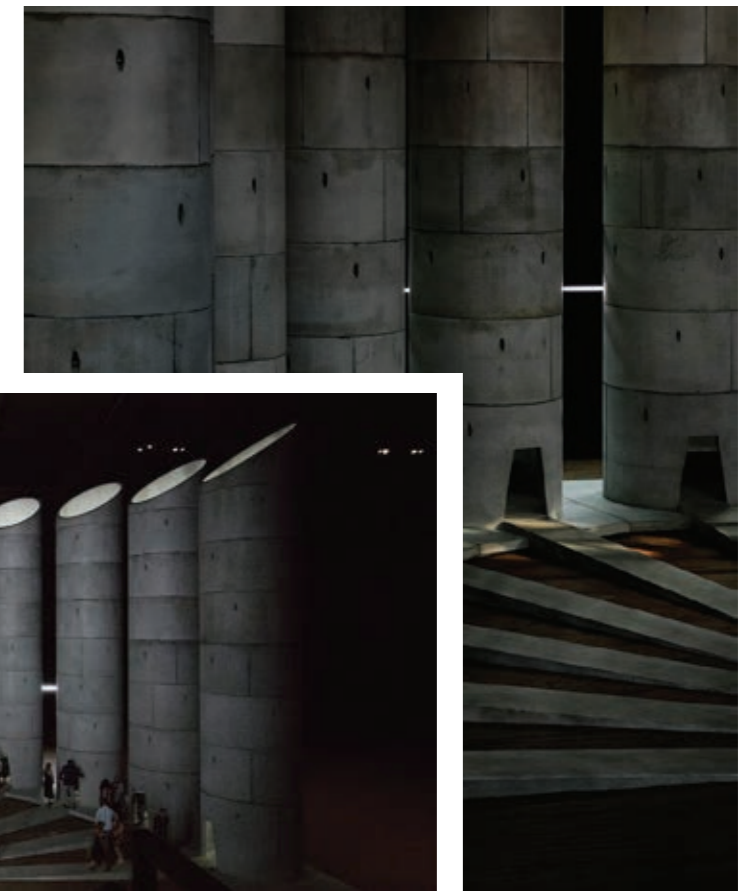
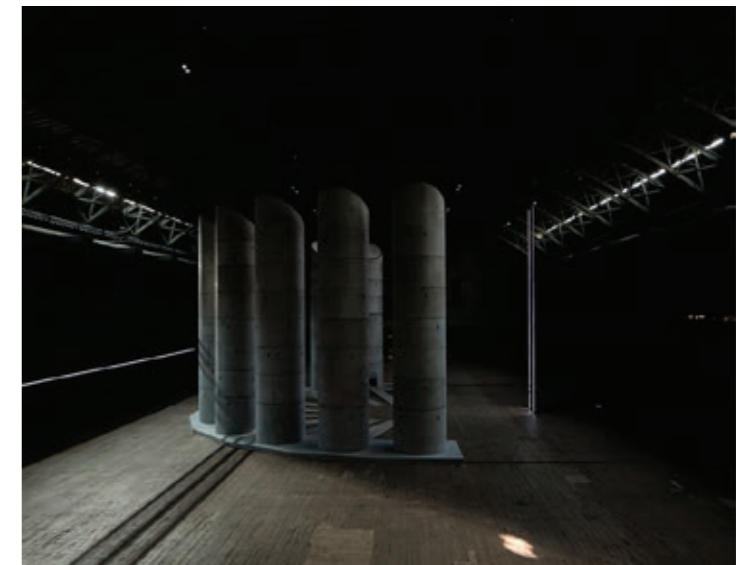


# NUTRITION *for your ideas*

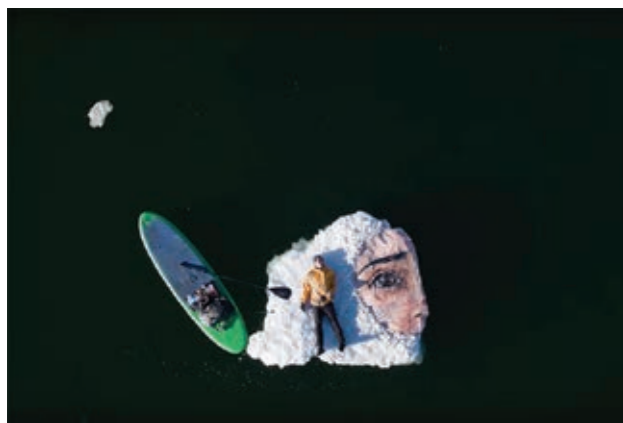
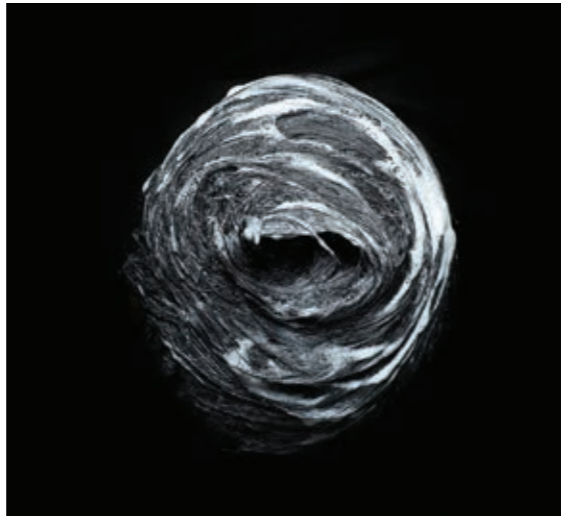
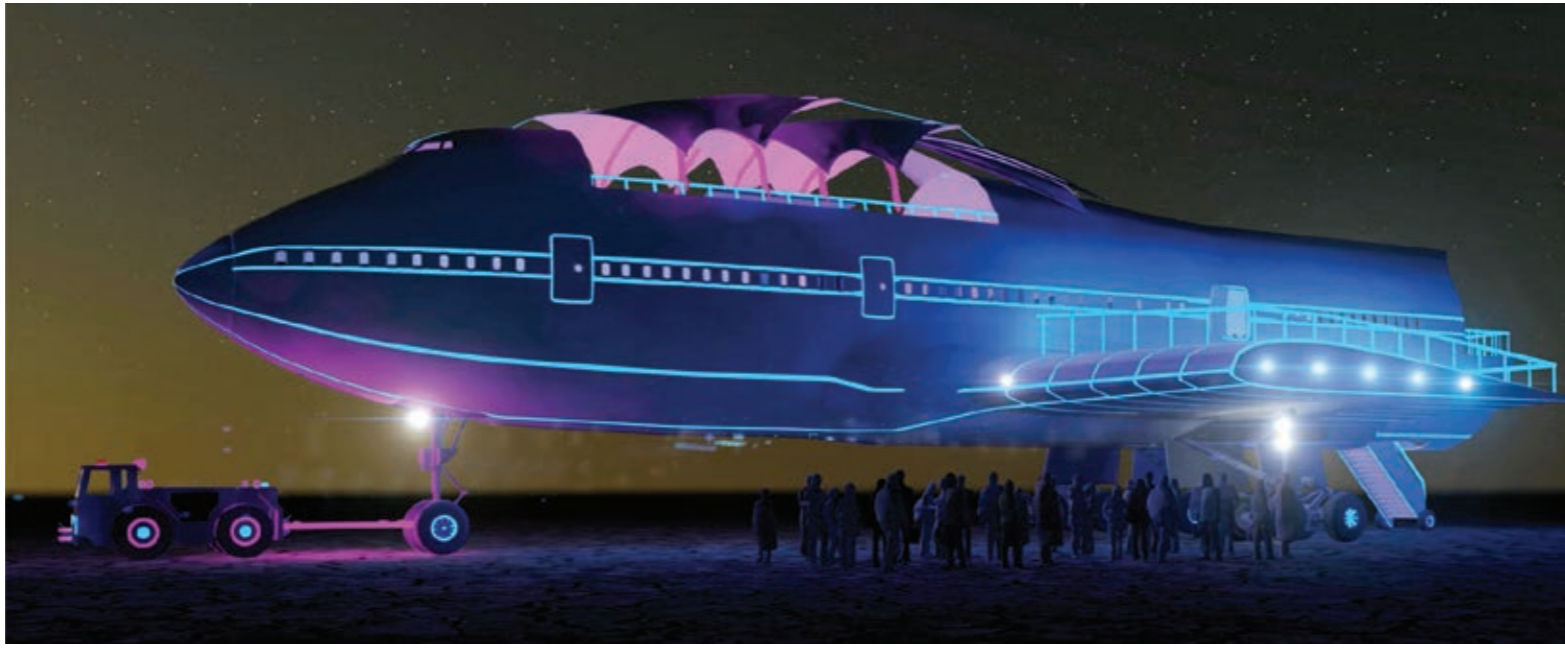


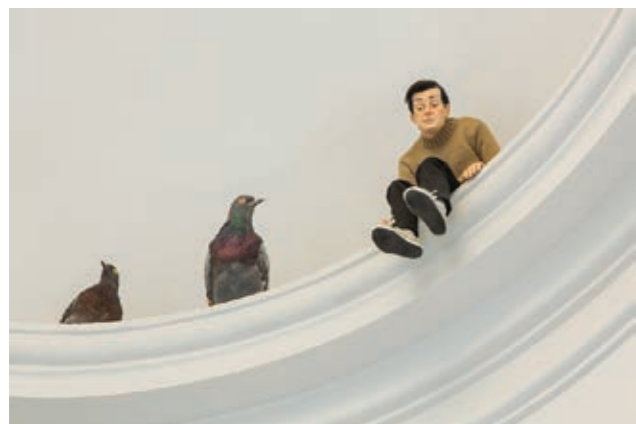
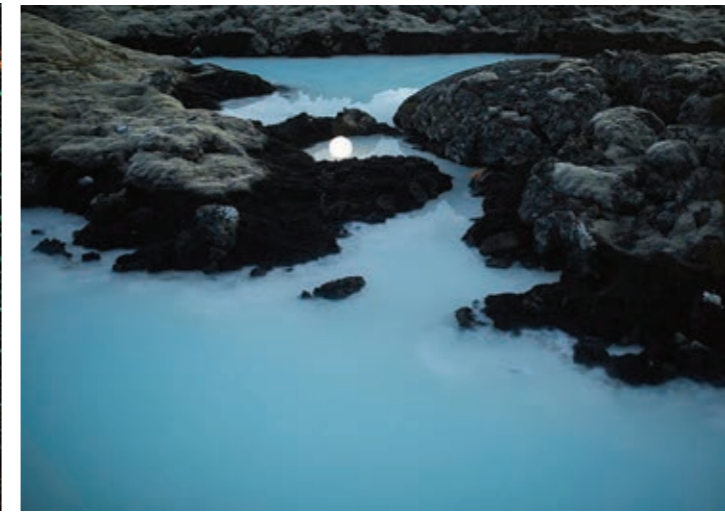












OCTOBER 2016

VOL.  
**016**

**INSPIRATION  
BOOK**

A BOOK OF MIXED INTERIOR  
DESIGN REFERENCES. NOT FOR  
SALE - INTERNAL USE ONLY

VOL.  
**016**  
INSPIRATION  
BOOK  
—