

# INSPIRED<sup>39</sup>

September 2018 - **NOT FOR SALE** - An inspiration book of interior design references. - [www.mhllt.com](http://www.mhllt.com)

INTERIOR DESIGN



MAHALLATI  
INTERIOR DESIGN

*14 Bedrooms With  
Statement Wallpaper*

*Tour Homepolish Co-  
founder Will Nathan's  
Industrial Loft in New  
York City*

*22 Chic Rooms With All-  
wood Ceilings*

*Why do we print this book? Here are some of advantages having a printed book.*

*Printed books • Printed books revolutionized the world nearly 600 years ago, and since then they have influenced every part of the world, specifically in culture and science. They gave people chance to share their ideas and thoughts with the whole world.*

**Advantages of printed books** • No need for an e-reading device • No batteries needed – the only thing you need is book and you can start enjoying whatever the book has to offer you. • Understandability – you can put marks and take notes so that you can easily understand what writer wants to say

Tangibility – choosing printed book is opting for prolonged existence and tangibility. It has ability to be seen forever on your shelf with other books. • It's for everyone – even the non-computer literate readers will find no worries with printed books when they want to read. (quoted from: Marina Hajduković)

- 
- All the contents were taken from several online sources.
  - Some pictures are not in HD quality due to function conversion
- 

## DESIGNED TO BE DISTINGUISHED

**Mahallati is an internationally acclaimed interior design, manufacturing and production firm based in Bali, Indonesia.**

With a team of over 120 artisans, designers, woodcrafters, metal workers, upholsterers and consultants in related fields with over a century of collective industry experience; we work closely with our clients to create exceptional work. Our innovative workflow results in a true end-to-end solution and our growing portfolio of successfully executed projects have won awards and hearts across 3 continents.

Visit our website:  
**[www.mhllt.com](http://www.mhllt.com)**

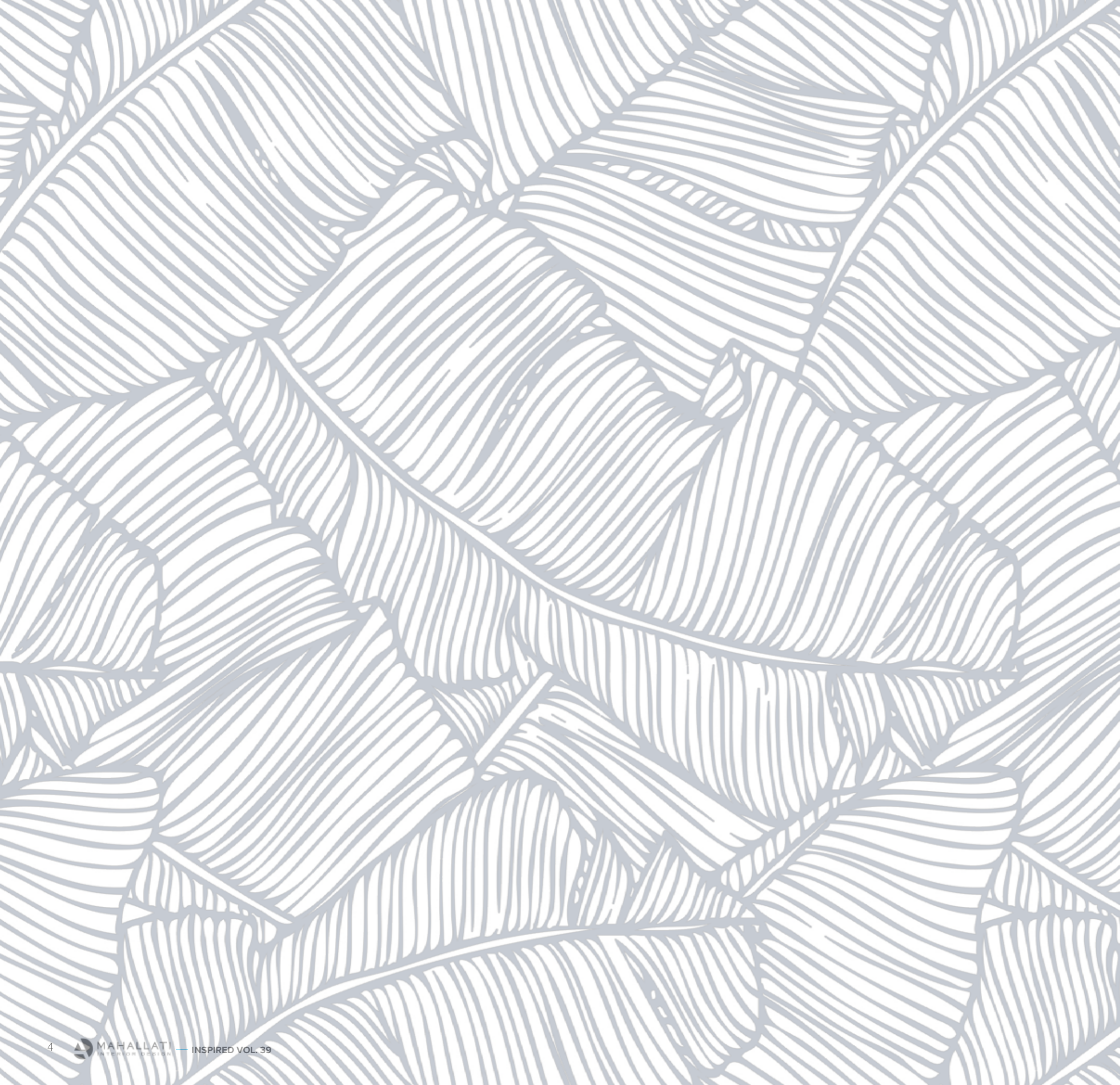


### CONTACT

+62 817 551 414  
info@mhllt.com

### LOCATION

Jl. Sunset Road #115,  
Seminyak,  
Bali, Indonesia



**WHAT'S  
INSIDE?**

14 Bedrooms With  
Statement Wallpaper

Tour Homepolish Co-  
founder Will Nathan's  
Industrial Loft in New  
York City

22 Chic Rooms With All-  
wood Ceilings

Visually Inspired

14 Bedrooms with

# STATEMENT WALLPAPER

**STATEMENT**  
WALLPAPER

*All the inspiration you need to  
personalize your bedroom.*



### MASCULINE BUT FLORAL

A warm modern bedroom with sepia-toned wallpaper and cantilevered table lamps by Laura Hodges Studio.



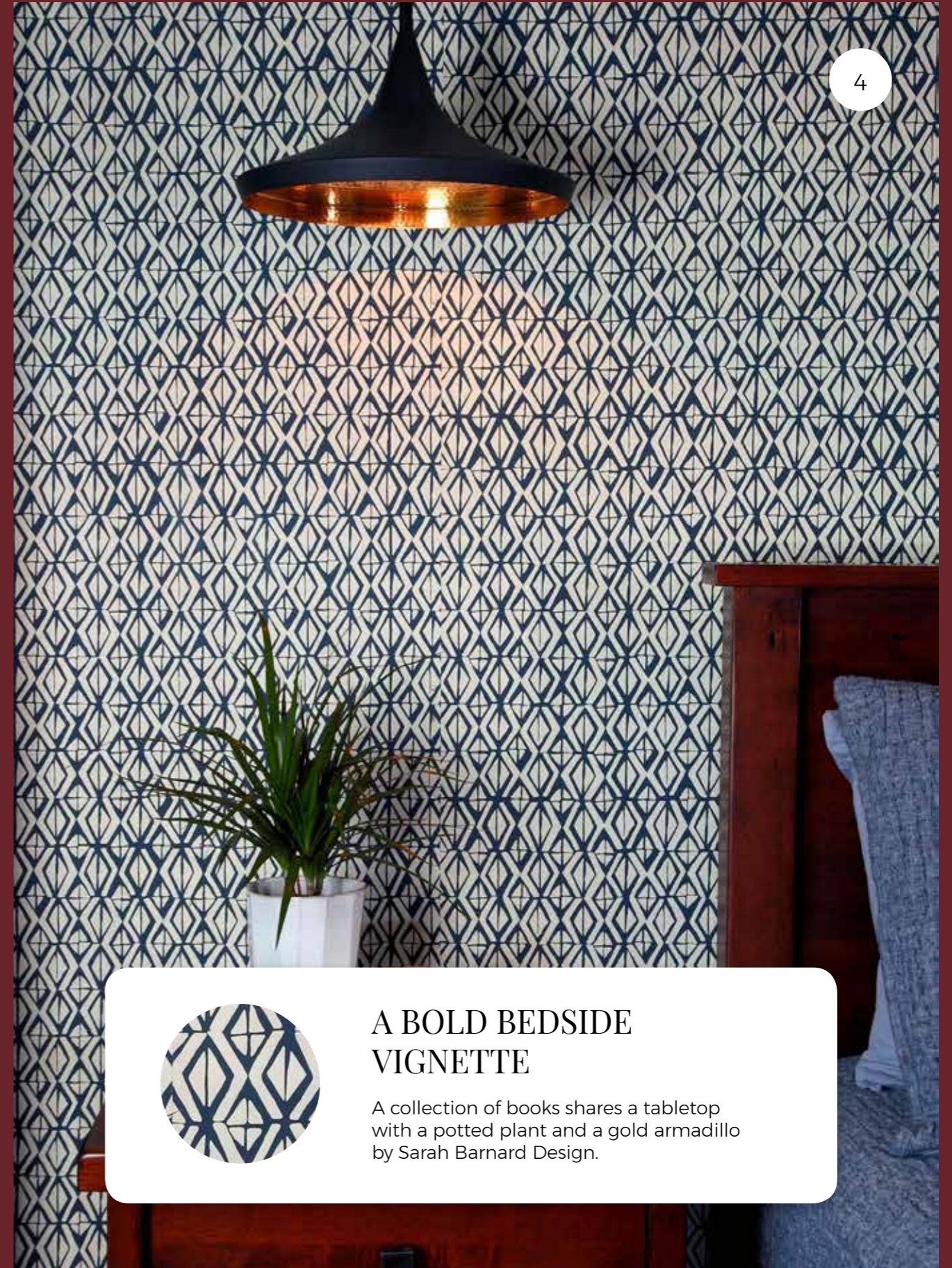
### ICY AND COOL

A master bedroom retreat in a DUMBO, Brooklyn, loft by Current Interiors.



### PRETTY AND PASTEL

A sweet, feminine bedroom by Maureen Stevens Design.



### A BOLD BEDSIDE VIGNETTE

A collection of books shares a tabletop with a potted plant and a gold armadillo by Sarah Barnard Design.



### TROPICAL MEETS HOUNDSTOOTH

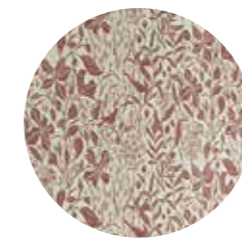
The master bedroom of a home in East Austin, Texas, by J. Fisher Interiors.



### POPS OF COLOR

A shade and accessories provide a dose of color to this soothing master bedroom by Tim Barber Ltd.

7



## A COLORFUL KID'S ROOM

A sweet bedroom for a child in New York's Upper East Side by Fawn Galli Interiors.



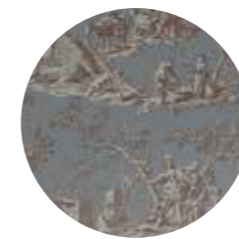
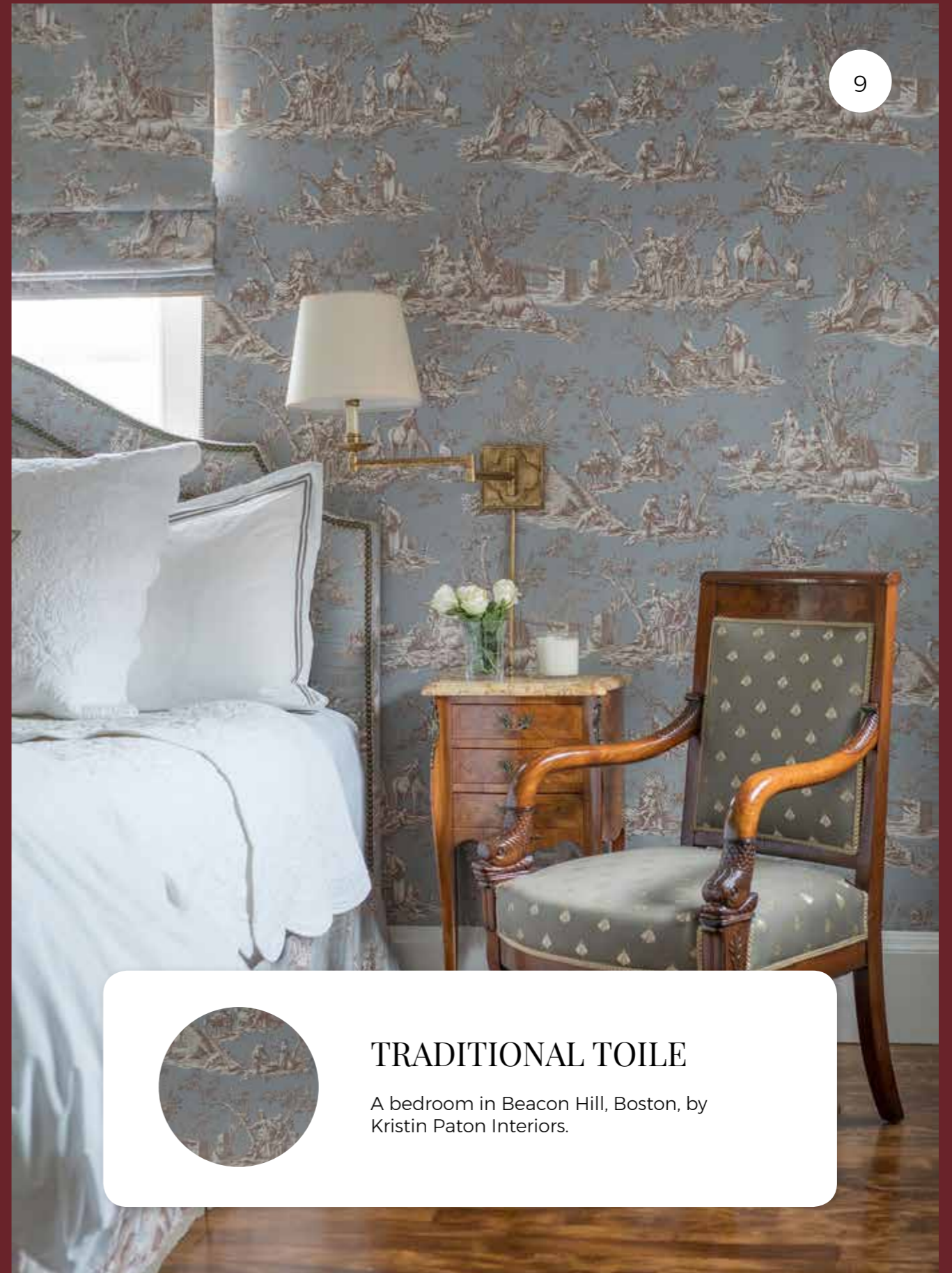
8



### COLOR WITH A VIEW

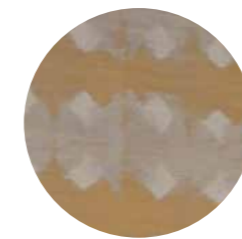
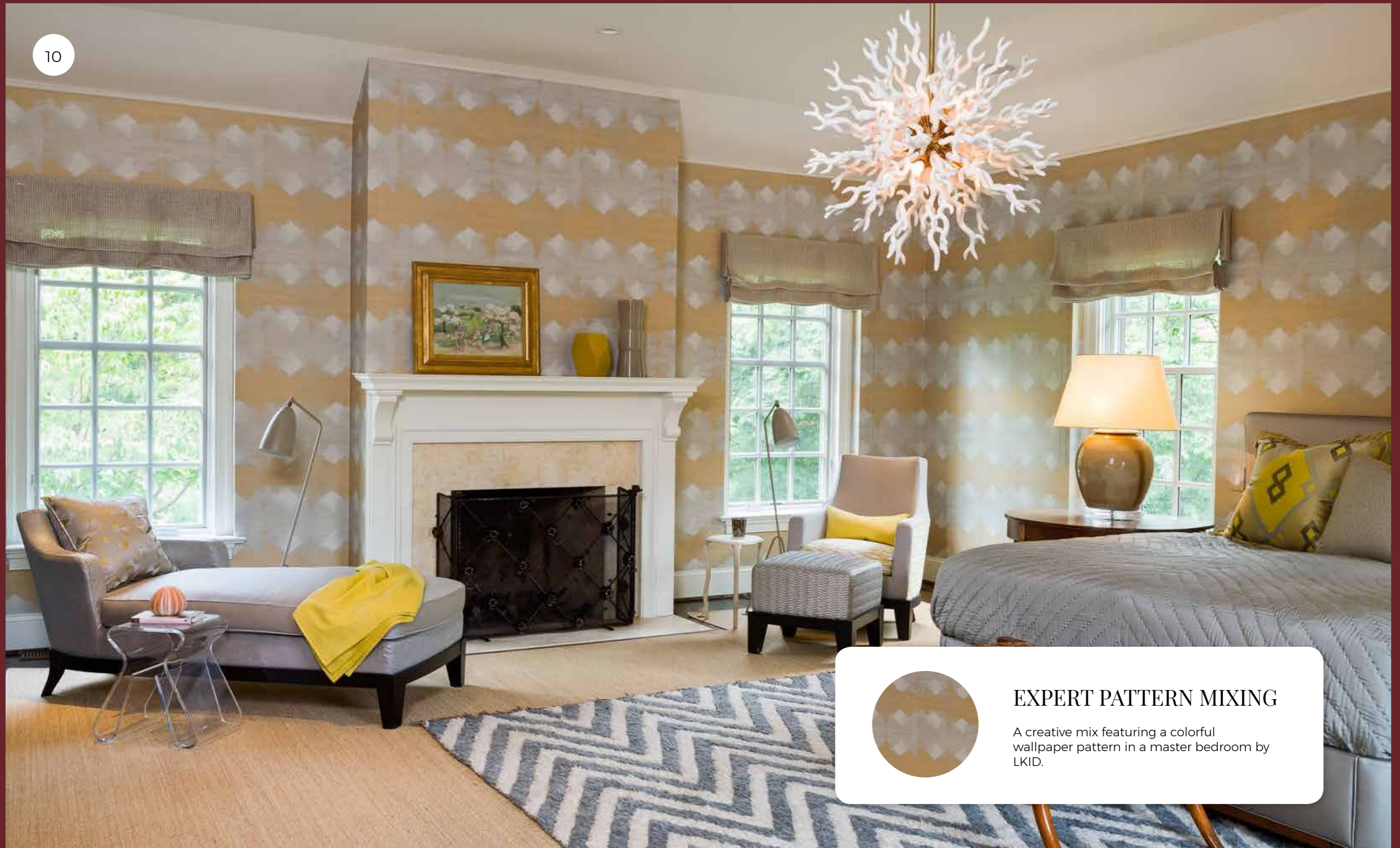
An elegantly wallpapered bedroom with a serious view, by Gauthier-Stacy Inc.

9



### TRADITIONAL TOILE

A bedroom in Beacon Hill, Boston, by Kristin Paton Interiors.



### EXPERT PATTERN MIXING

A creative mix featuring a colorful wallpaper pattern in a master bedroom by LKID.

11



### GRAY FLORALS

CWB Architects created this retreat in Woodstock, New York; shown is a bedroom that inventively mixes neutrals and florals.

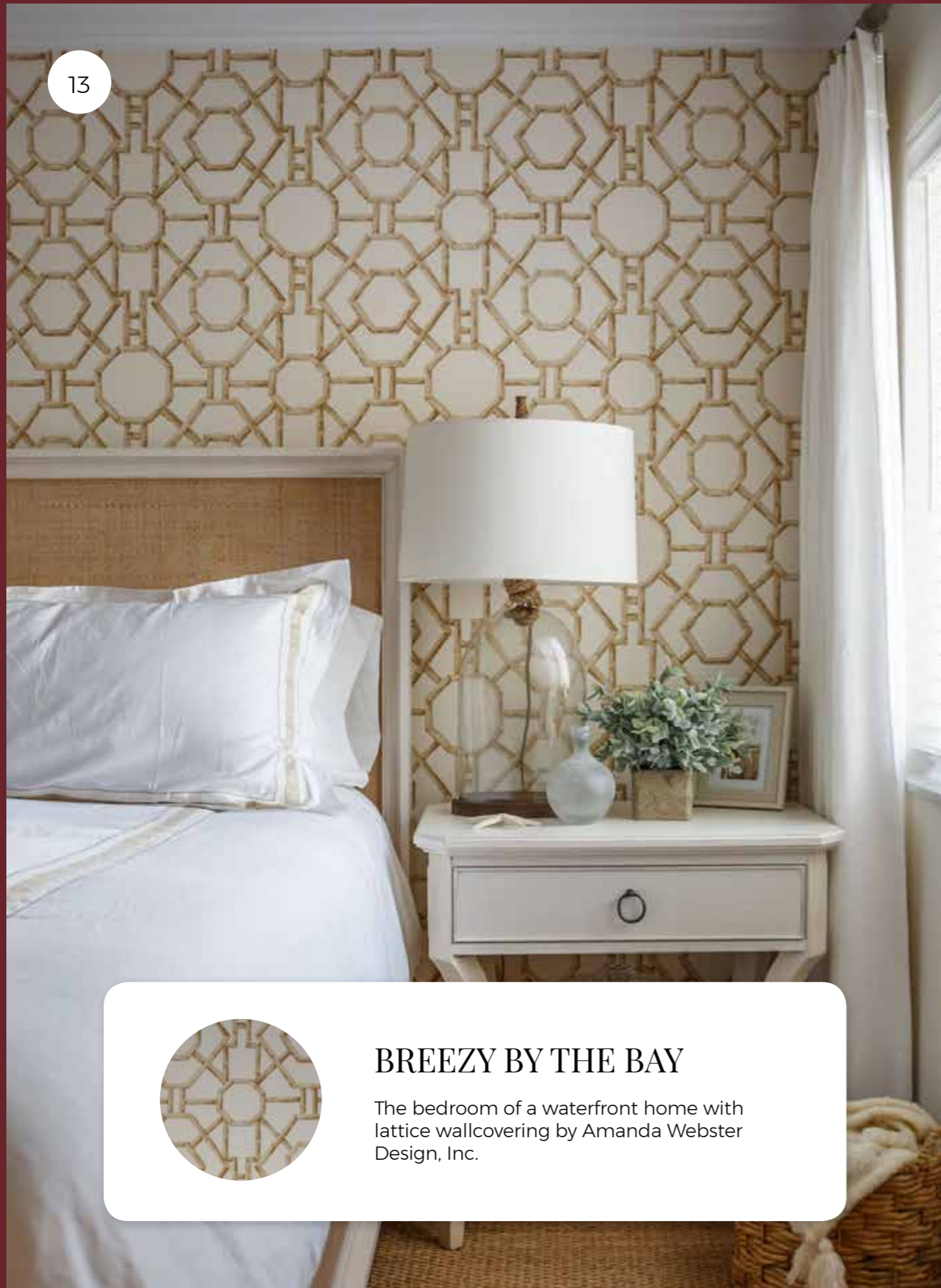
12



### CREATIVE COLORS

Marks & Frantz used colorful furniture and pattern mixing to full effect in this master bedroom.

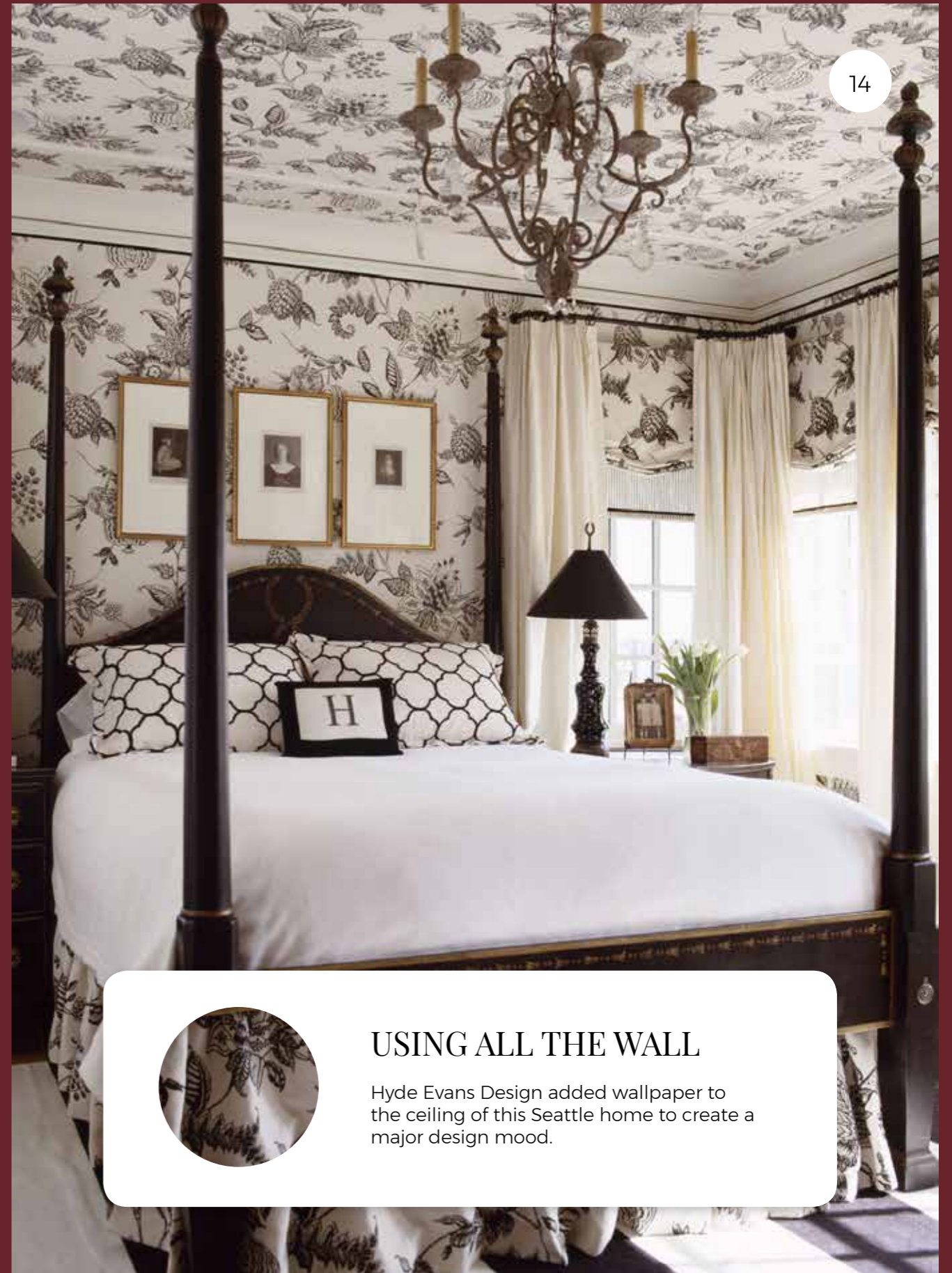
13



### BREEZY BY THE BAY

The bedroom of a waterfront home with lattice wallcovering by Amanda Webster Design, Inc.

14



### USING ALL THE WALL

Hyde Evans Design added wallpaper to the ceiling of this Seattle home to create a major design mood.



*Tour Homepolish  
Co-founder  
Will Nathan's  
Industrial Loft in*

# NEW YORK CITY

The stunning 2,800-square-foot space is a lesson in open-concept living.





It takes a certain caliber of interior designer to oversee the gut renovation of a home owned by a Homepolish co-founder. Just think about it. Since 2014, the startup has garnered attention for its success with teaming clients up with designers who match their style and, more importantly, their budget. Still, New York-based designer Becky Shea was up for the challenge.

Over the course of seven intense months, Shea and her team worked closely with Will Nathan, who is also the

founder of Object Limited and Partner at Trail Mix Ventures, to transform his Soho loft into an industrial retreat that suits his bicoastal lifestyle. The project appealed to Shea for two reasons: she connected with Nathan's business acumen as a fellow entrepreneur and they share an appreciation for history and architecture.

And so the process of revamping the 2,800-square-foot loft in a landmark early 20th century building began.



## ORGANIC MODERNISM

Shea first had to consider how her design style would translate into the space and complement Nathan's aesthetic. "My style is on the organic-modernist side with a bit of industrial elements," Shea said. "Will appreciate history, as do I, so we took it upon ourselves to strip the space down layer by layer."

The original space was awkwardly divided into seven small rooms. Shea's goal was to make it feel more spacious, while keeping the authenticity of Soho's design ethos in mind. To make this happen, Shea converted the space into an open-floor plan.

## THE KITCHEN

One area that showcases the true beauty of the open-floor concept is the kitchen, which turns out to be one of Nathan's favorite spots in the loft. Details like a large marble island, a trio of minimalist pendants, and open shelving add interest.



## THE LIGHT-FILLED MASTER BEDROOM

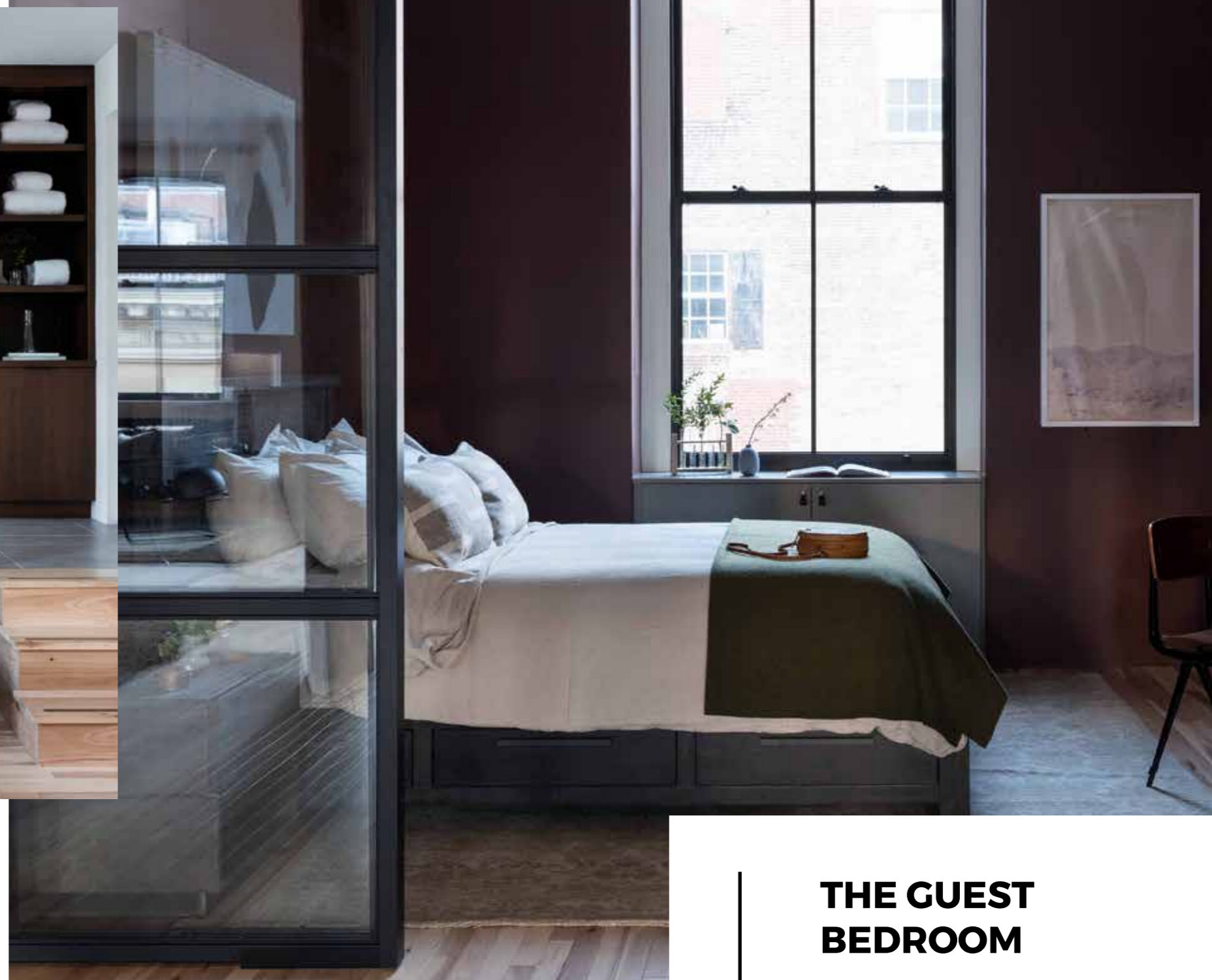
For the master bedroom, which is adjacent to the master bathroom, Shea said there was one clear objective: "We wanted it to almost feel like a hotel." Furnishings were kept to a minimum with a simple, low-profile bed, nightstands and a basic rug that highlights the beauty of the wood flooring. Plus, there's an accent chair boasting a quintessential 1920s motif—a nod to Frank Lloyd Wright.





## AMERICAN-MADE ACCENTS

Another highlight of the bedroom is a 15-by-8-foot glass wall that can be dimmed when the shower is in use. It separates the master bathroom from the bedroom, allowing for privacy. It's also an example of Shea's attention to detail. "The glass [in the shower] is from an old factory in Detroit," Shea said. "Everything in the home is American-made."



## THE GUEST BEDROOM

Along with American-made accents, the designer made an effort to maximize the natural light that pours into the loft throughout the day. She changed the windows to match those in front of the landmarked property and the bedroom doors were upgraded as well.



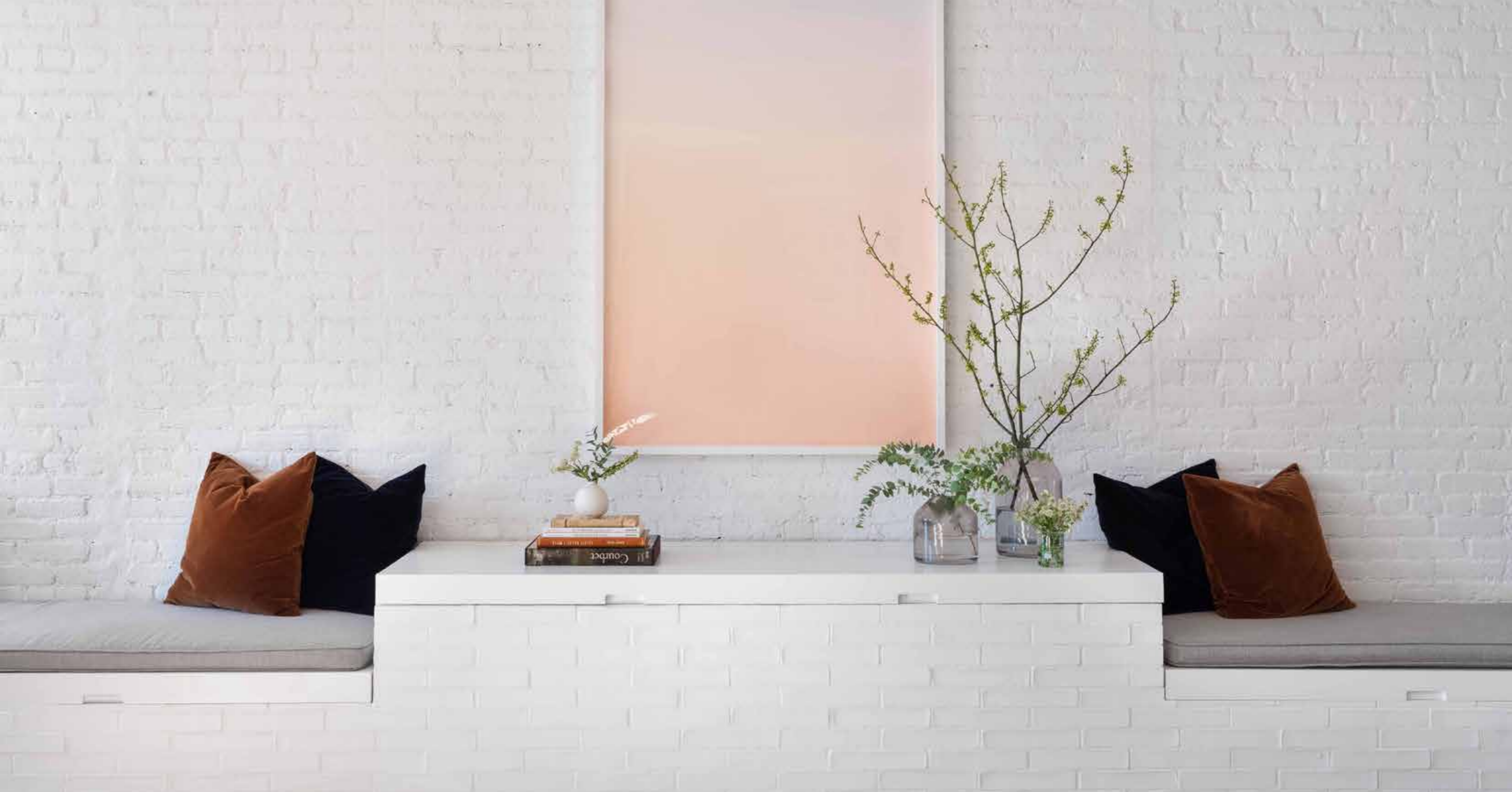
## A LESSON IN SIMPLICITY

Despite the scale of the project, the concept of simplicity informed Shea's decisions. For instance, rather than installing a full closet, Shea opted for a simple clothing rack, like the one featured in the guest bedroom. It was a better design choice as guests don't frequent the space regularly, since Nathan splits his time between Arizona and New York.



## THE MASTER BATHROOM— WITH STORAGE

When it comes to storage solutions, Shea's creativity really shines. The designer captured space underneath the master bathroom floor for Nathan to store entertaining essentials, seasonal goods and other belongings.



## ANOTHER UNCONVENTIONAL STORAGE SOLUTION

And that's not the only instance of Shea's clever approach to storage. She also installed a 35-foot bench that doubles as storage. It boasts a striking, faux brick facade and runs the span of the living and dining room areas.



## A SITTING AREA

Considering Nathan's busy schedule, a cozy area to simply relax and read was a requirement, too. Shea crafted an inviting nook from a small elevator vestibule (the building's first floor is a commercial space). The designer positioned a bench with an upholstered cushion from Stitchroom in front of a built-in bookcase. LVWood Hickory flooring, a NAFCO Studios table, and a black and white photograph taken during one of Shea's trips to Amsterdam complete the area.



## THE BEAUTY OF OPEN SPACES

Both Nathan and Shea couldn't be more pleased with the overhaul. "He [Nathan] was one of those dream clients who told me what he wanted and let me run with it," Shea said. "He was very happy with what I presented from day one. I also like working with open-concept spaces, because you can really position furniture wherever [you] want. I like rooms that make you think outside the box."

22 CHIC ROOMS

*with*

# ALL-WOOD CEILING

Warm and welcoming  
inspiration awaits.

With its natural texture and charming style, you can warm up any space with wood ceilings. Dering Hall designers show us how it's done with these stunning spaces with all-wood ceilings.





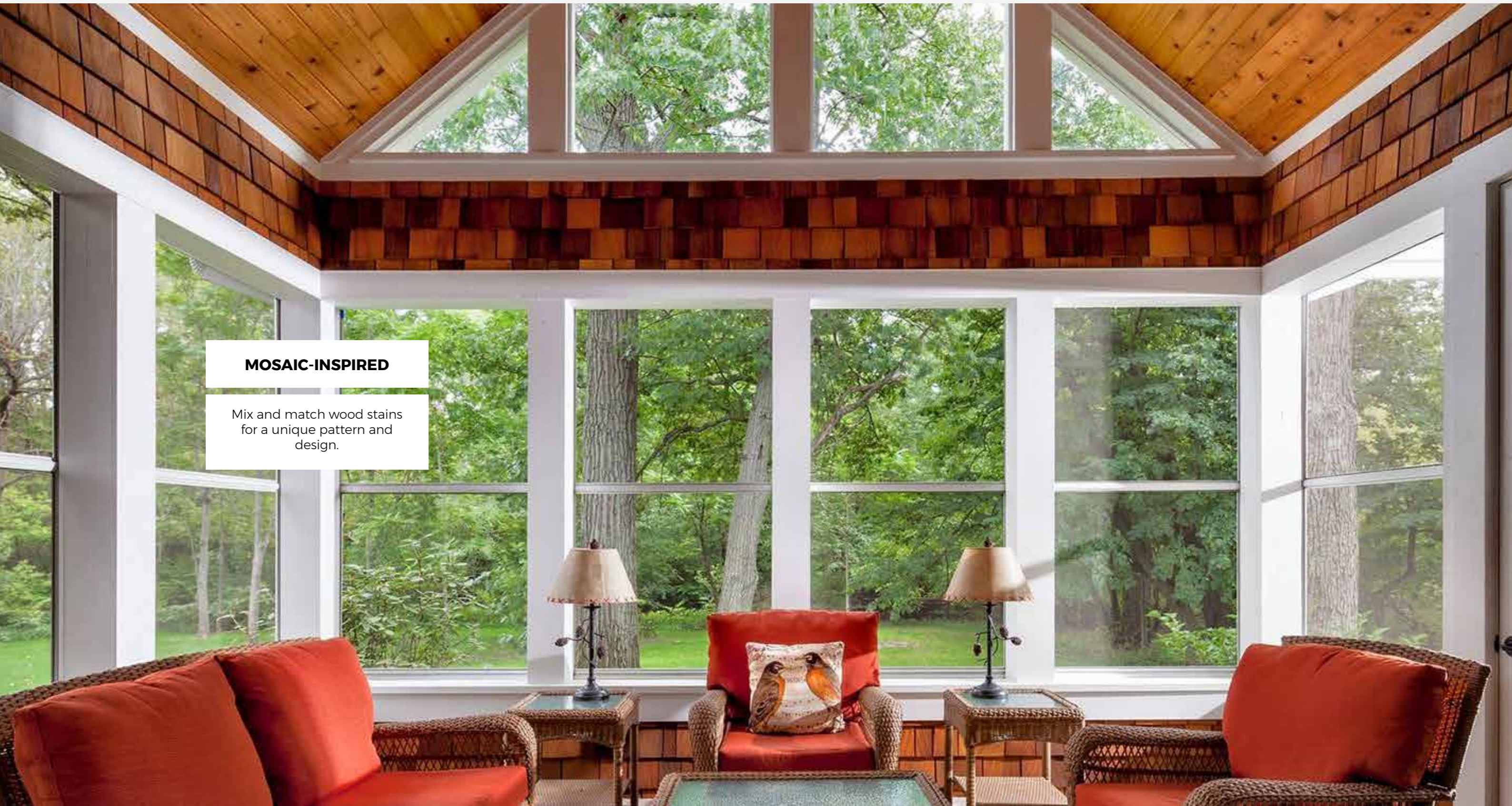
**GOTHIC AND CHESTNUT**

Add a chandelier to elevate the sense of style.



**CONTRAST MOULDING**

Pair light ash wood with a cheery red wood for a lovely contrast that's easy on the eye.



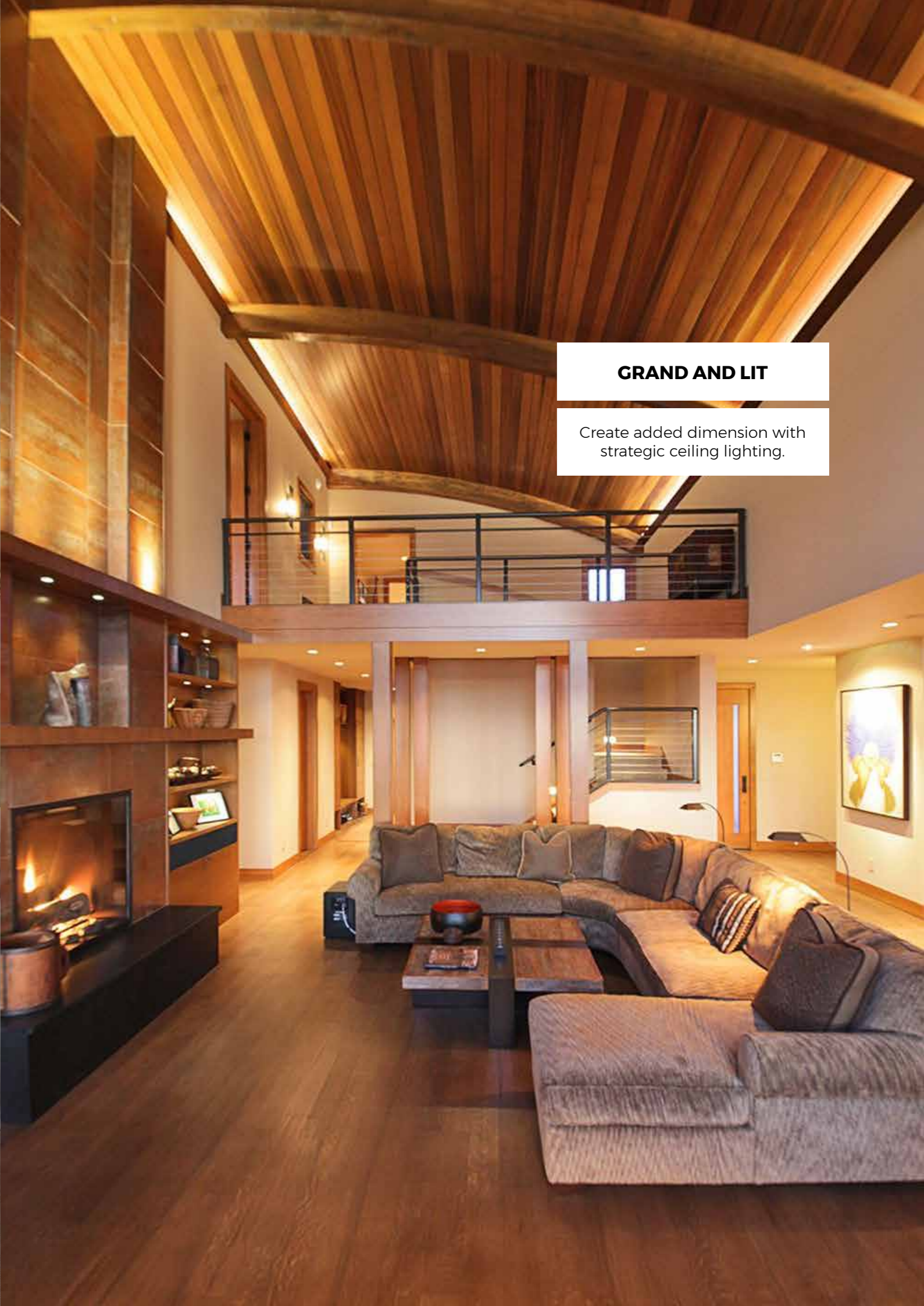
**MOSAIC-INSPIRED**

Mix and match wood stains  
for a unique pattern and  
design.



**SHABBY CHIC**

Go for a light-shade for a feminine feel.



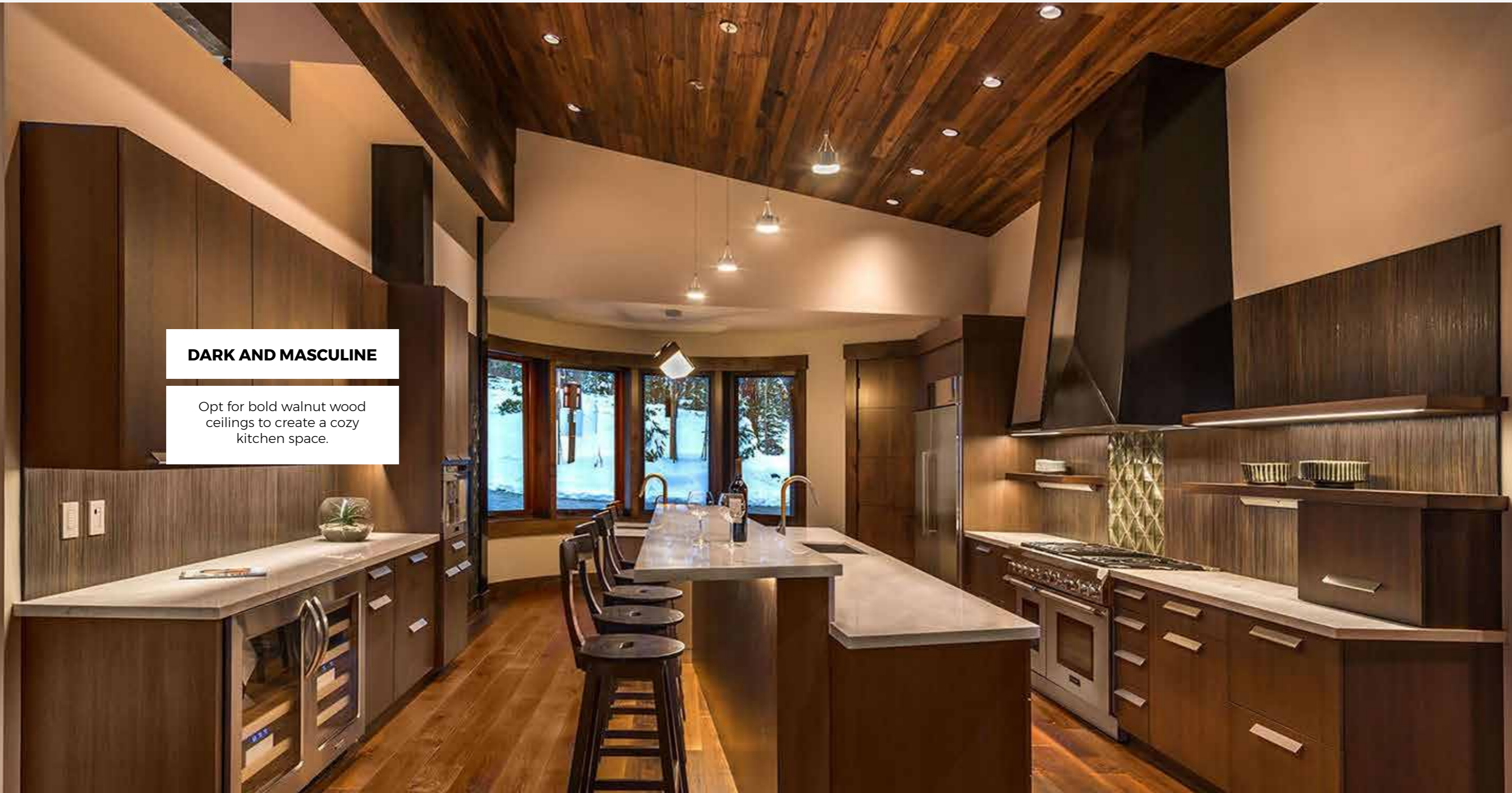
**GRAND AND LIT**

Create added dimension with strategic ceiling lighting.



**DARK AND MASCULINE**

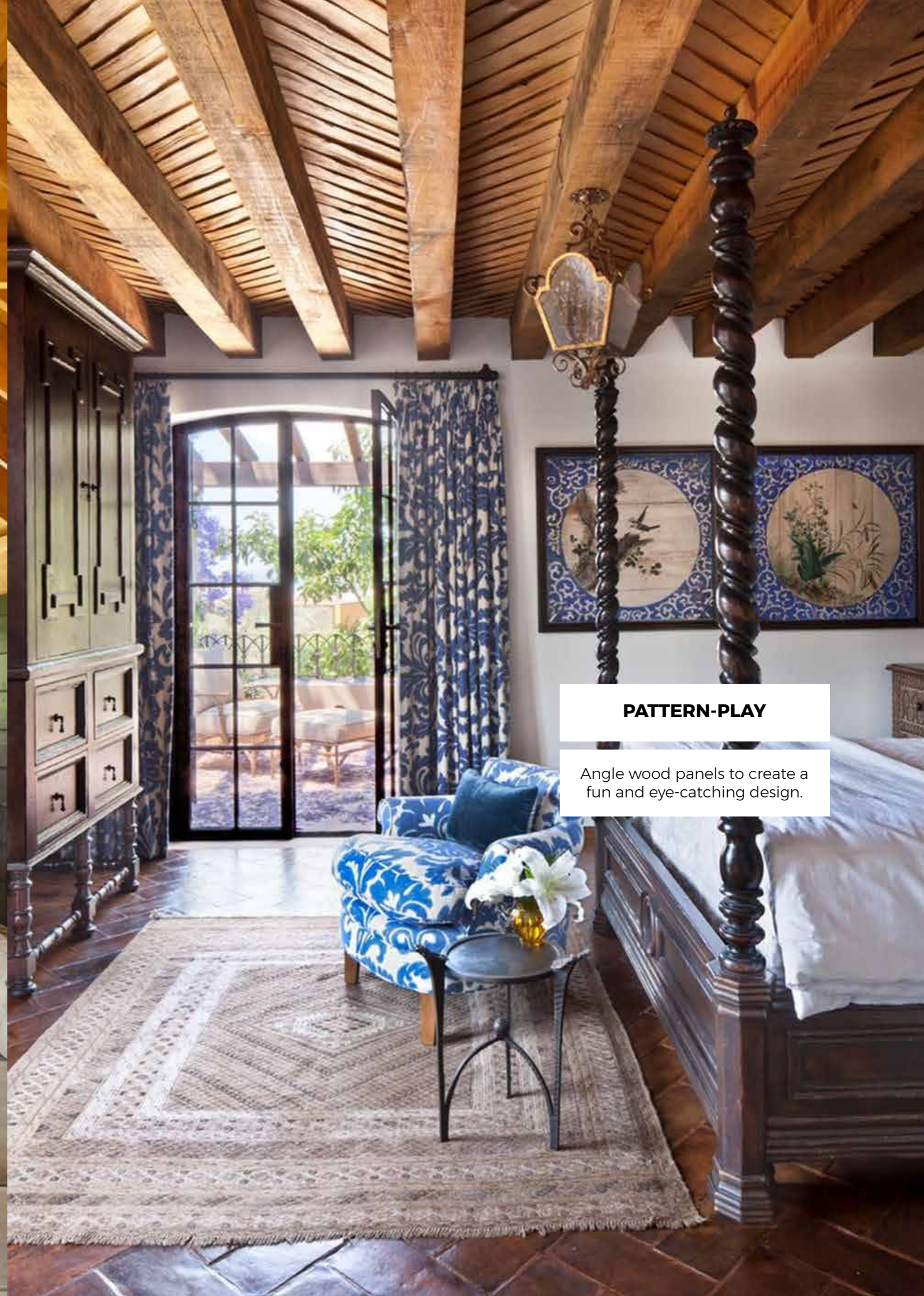
Opt for bold walnut wood ceilings to create a cozy kitchen space.





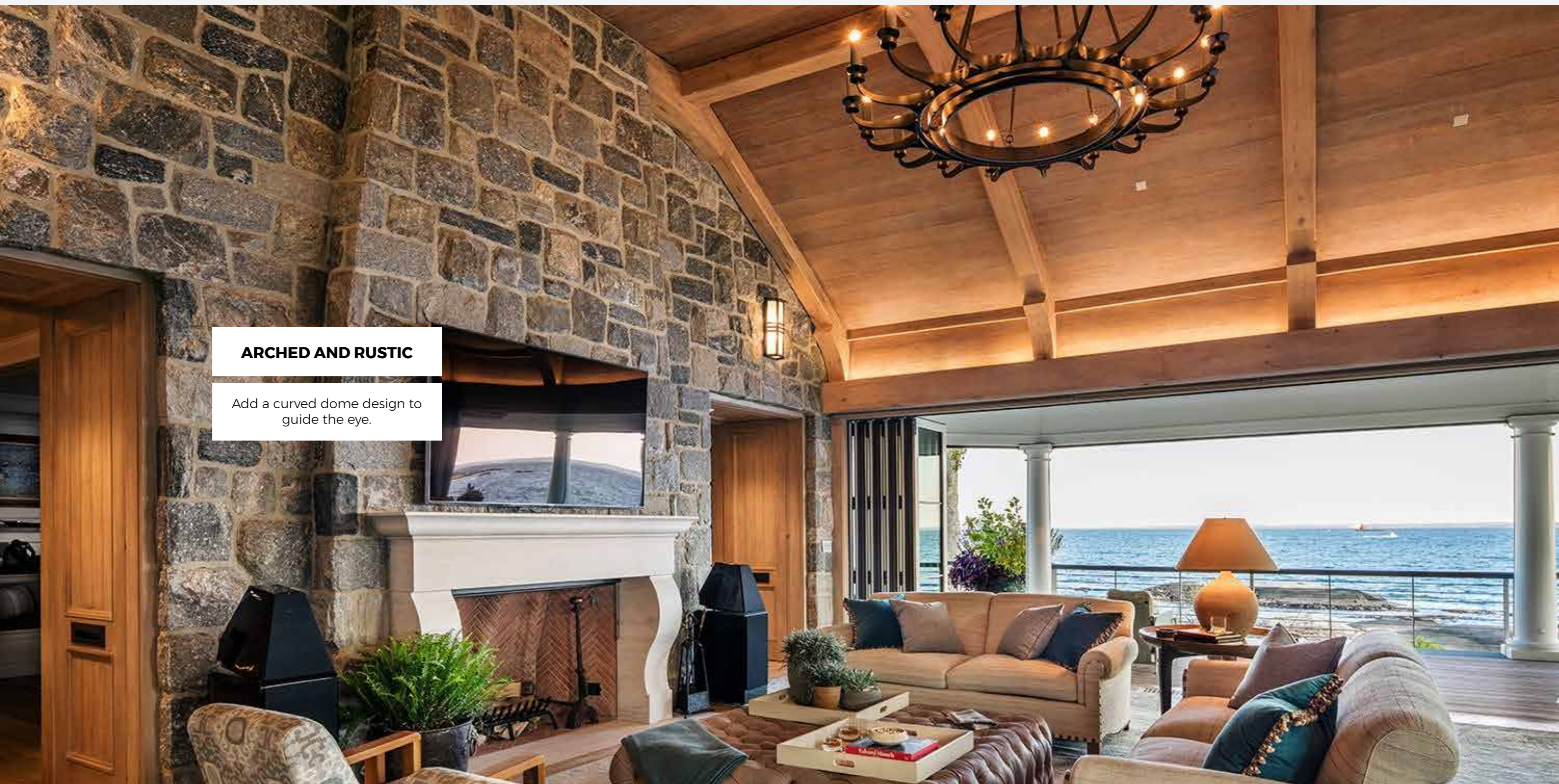
**A-LINE AND COZY**

Keep it rustic with classic a-line angles.



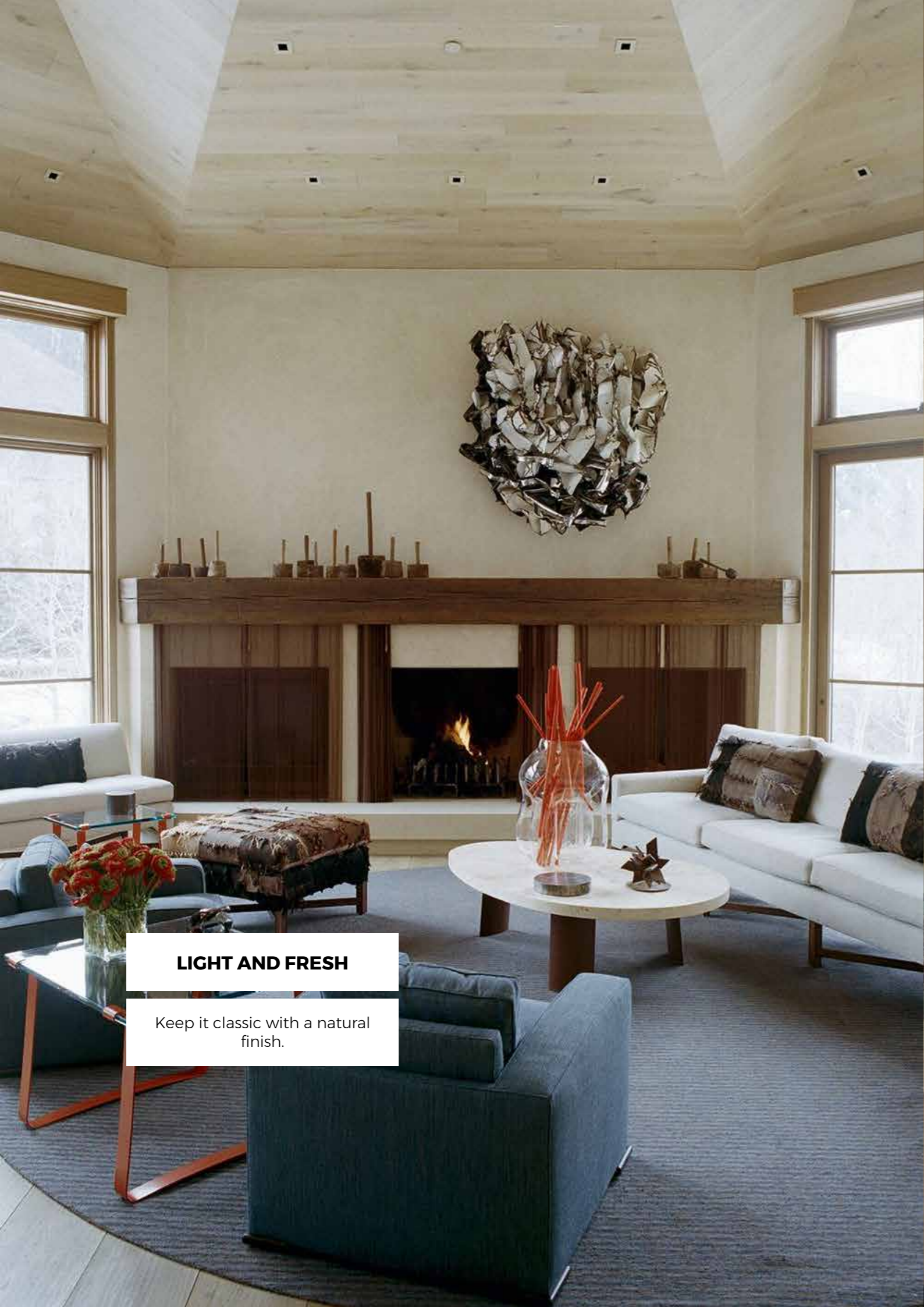
**PATTERN-PLAY**

Angle wood panels to create a fun and eye-catching design.



**ARCHED AND RUSTIC**

Add a curved dome design to guide the eye.



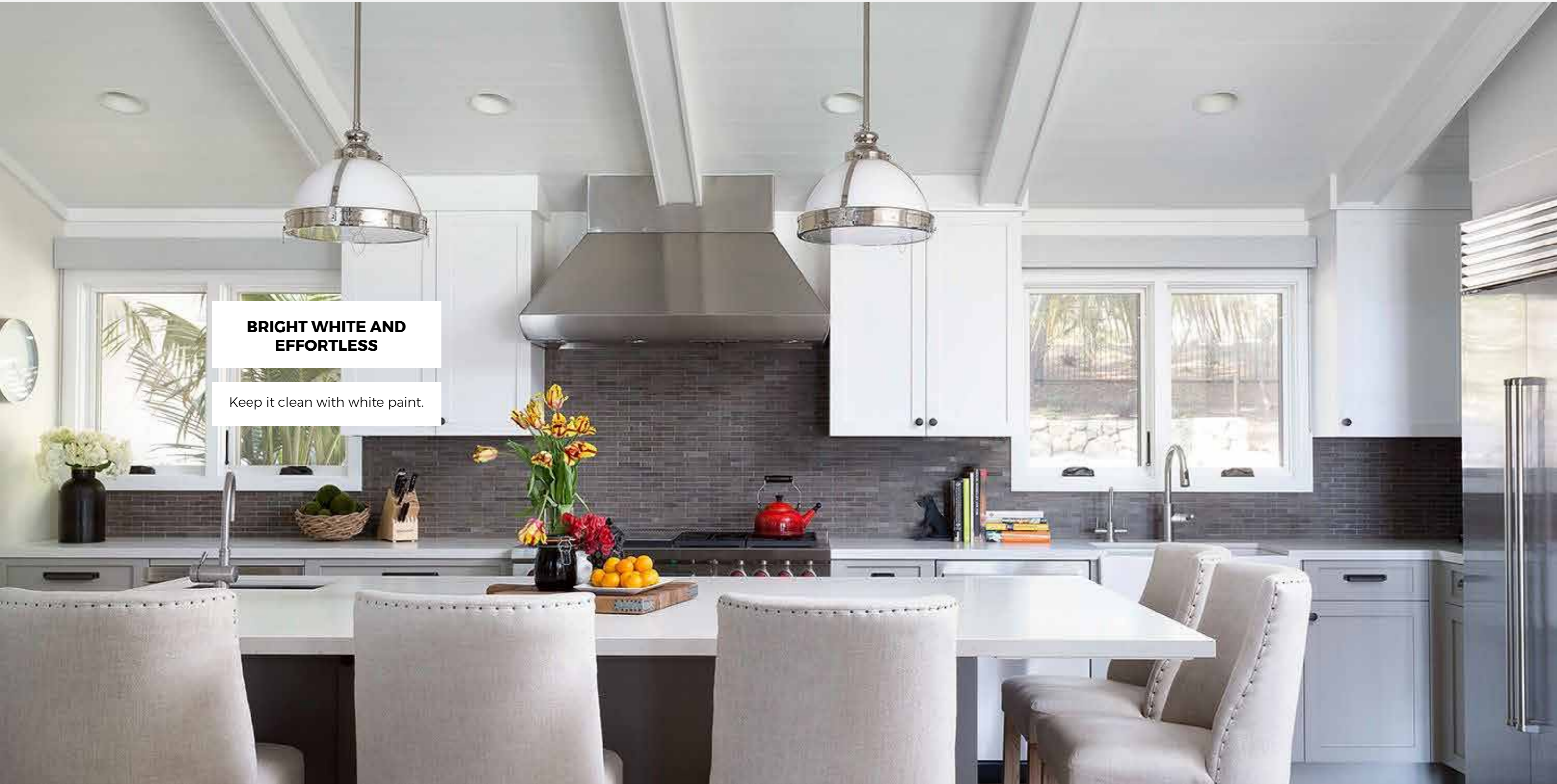
**LIGHT AND FRESH**

Keep it classic with a natural finish.



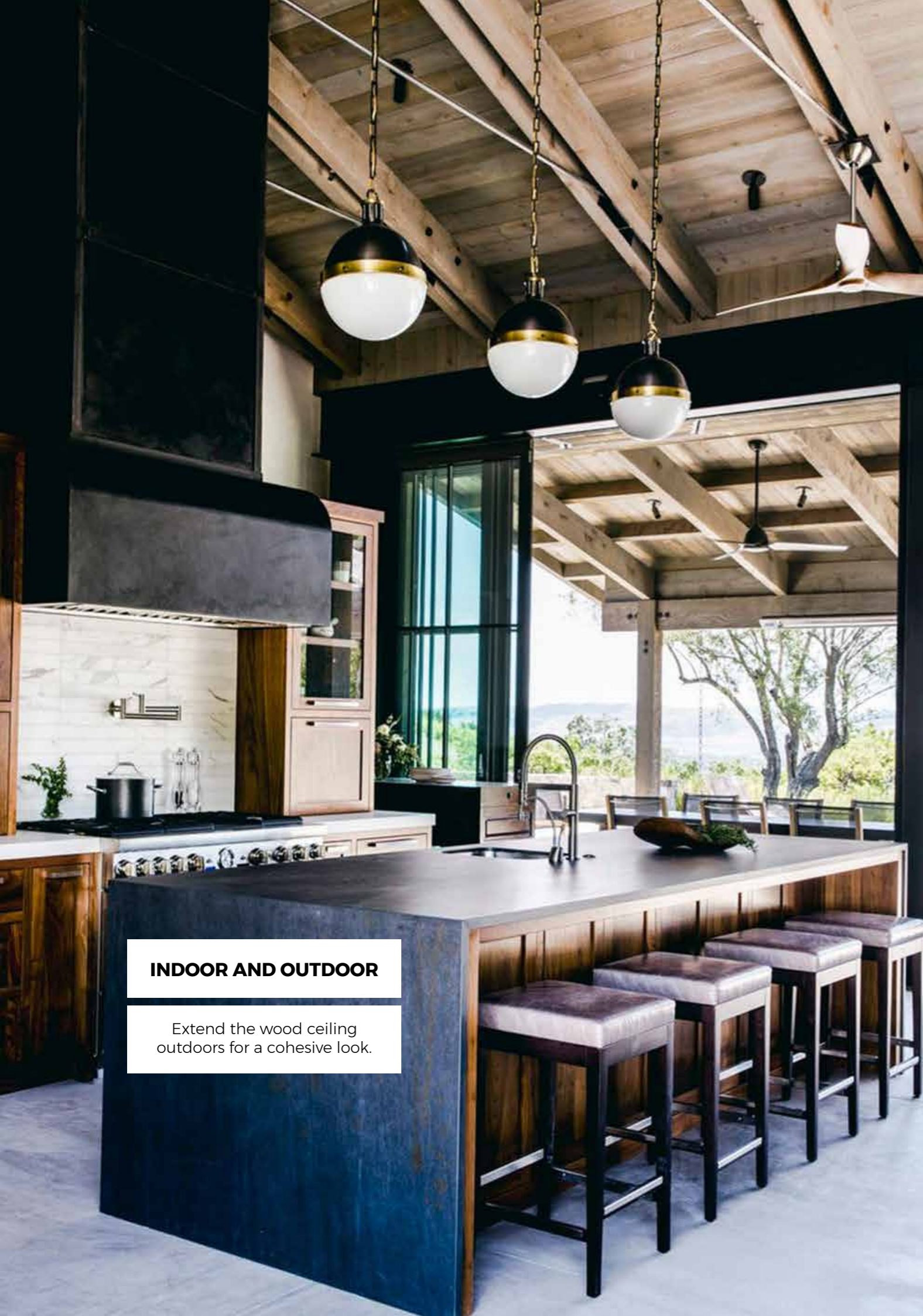
**HIGH AND ANGLED**

Create sky-high peaks for added drama.



**BRIGHT WHITE AND  
EFFORTLESS**

Keep it clean with white paint.



**INDOOR AND OUTDOOR**

Extend the wood ceiling outdoors for a cohesive look.



**STRUCTURED AND UNIFORM**

Reinforce your room in style with bold wooden beams.



**WARM AND WELCOMING**

Add accent lighting for a dramatic touch.



**FLOOR-TO-CEILING**

Extend the wood ceiling to the floor for a rustic all-wood look.



**GEOMETRIC AND MOD**

Add accent beams for a style that addresses form and function.





visually inspired.

**ORGANIC OBJECTS**

Local Preacher

ORGANIC OBJECTS



Local Preacher

ORGANIC OBJECTS



Local Preacher

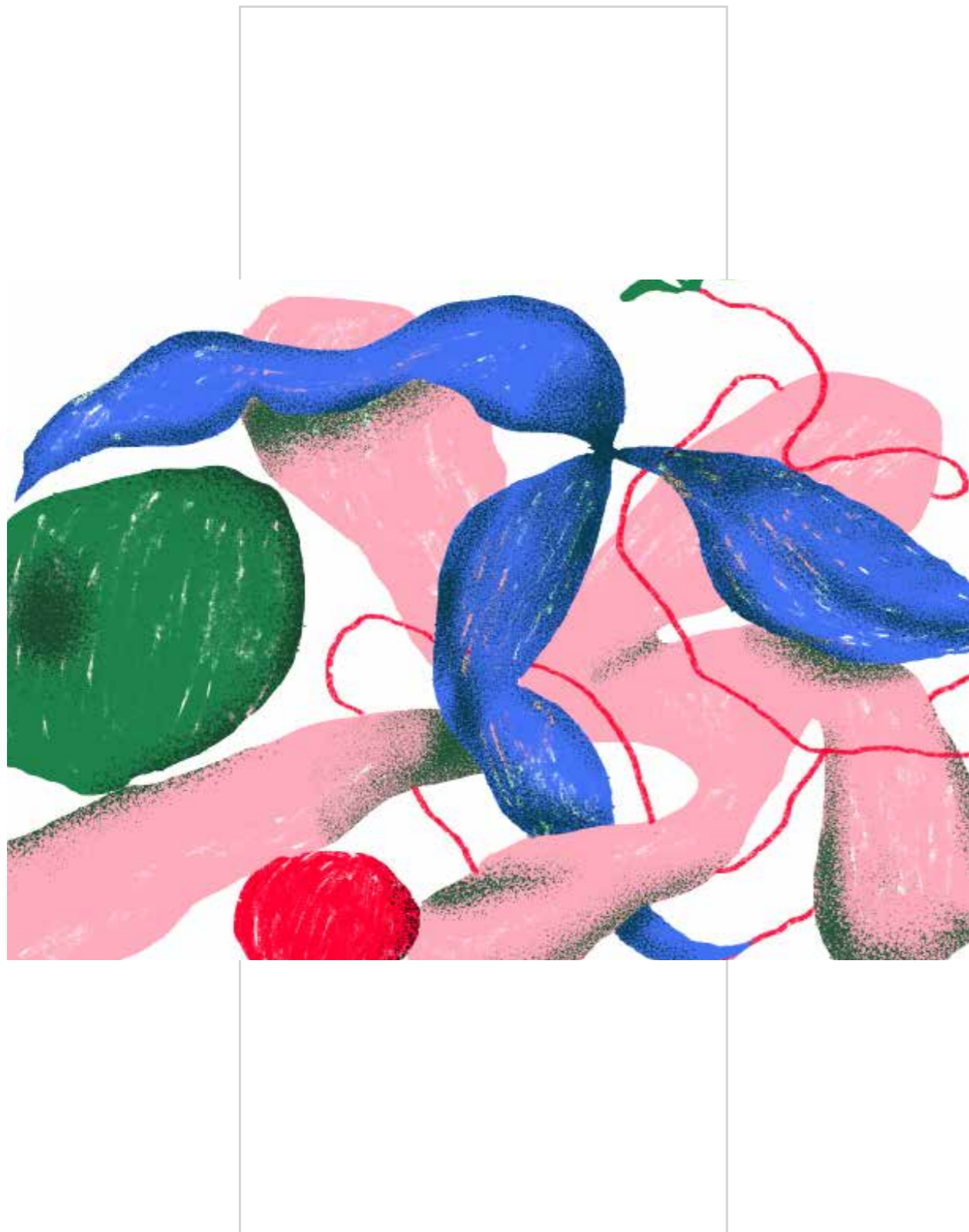
visually inspired.

**BODEGONES**

Juan Pablo Palarino

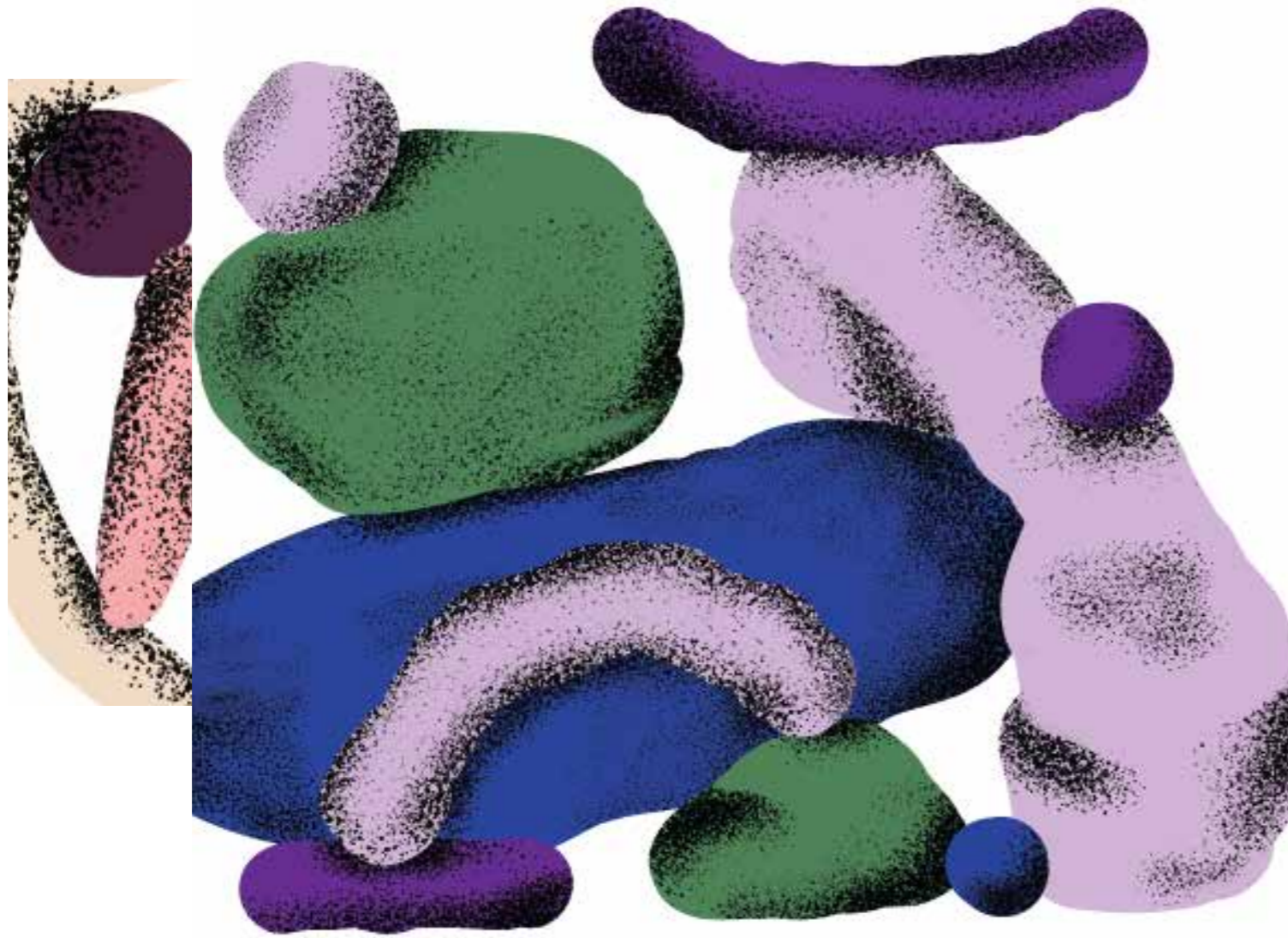


**BODEGONES**



Juan Pablo Palarino

**BODEGONES**



Juan Pablo Palarino

**BODEGONES**



Juan Pablo Palarino

Designers and people in general are too attracted by ‘new’, but nothing ages more quickly than ‘newness’. All my objects reflect [a] marriage between past and present.

“ *Marcel Wanders*