

# INSPIRED<sup>53</sup>

November 2019 - **NOT FOR SALE** - An inspiration book of interior design references. - [www.mhllt.com](http://www.mhllt.com)

INTERIOR DESIGN



MAHALLATI  
INTERIOR DESIGN

*Sophisticated Bedrooms  
With Low Platform  
Beds*

*Ideas for Styling Acrylic  
Dining Chairs*

*Top Designers Reveal  
How to Create the  
Most Serene Home  
Ever*

Visit our website:  
**[www.mhllt.com](http://www.mhllt.com)**

## Designed to Be Distinguished

**Mahallati is an internationally acclaimed interior design, manufacturing and production firm based in Bali, Indonesia.**

With a team of over 120 artisans, designers, woodcrafters, metal workers, upholsterers and consultants in related fields with over

a century of collective industry experience; we work closely with our clients to create exceptional work. Our innovative workflow results in a true end-to-end solution and our growing portfolio of successfully executed projects have won awards and hearts across 3 continents.

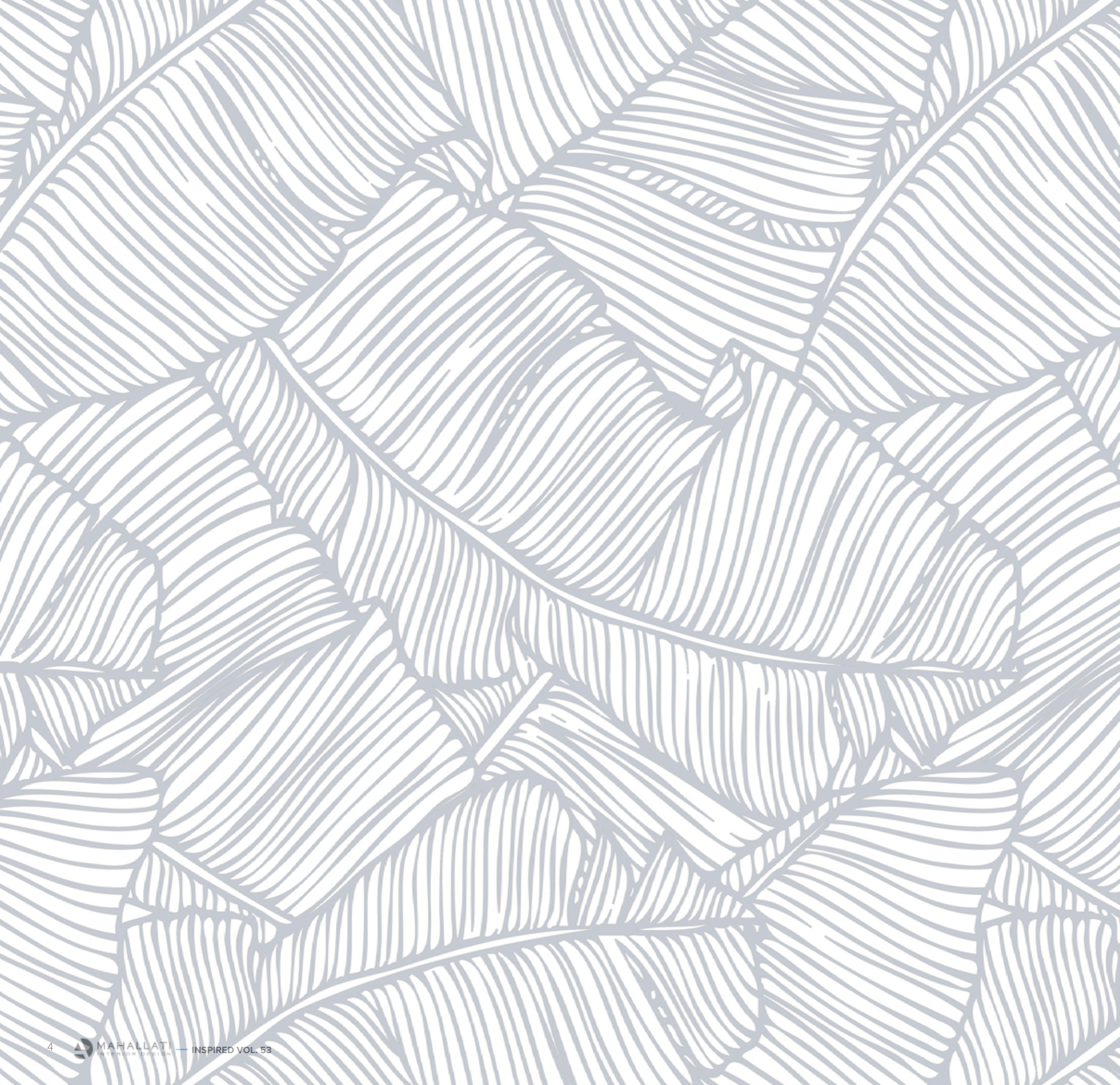


### CONTACT

+62 817 551 414  
[info@mhllt.com](mailto:info@mhllt.com)

### LOCATION

Jl. Gn. Tangkuban Perahu  
No.303, Padangsambian  
Klod, Denpasar Bar.,  
Kabupaten Badung, Bali  
80117



**WHAT'S  
INSIDE?**

Sophisticated  
Bedrooms With Low  
Platform Beds

Ideas for Styling Acrylic  
Dining Chairs

Top Designers Reveal  
How to Create the Most  
Serene Home Ever

Beautiful Kitchens With  
Dark Backsplashes

Visually Inspired

# SOPHISTICATED

# BEDROOMS WITH

# LOW PLATFORM

# BEDS

SOPHISTICATED

BEDROOMS WITH

LOW PLATFORM

BEDS



Discover a trend  
that suits any  
design style.

Style any space with a low platform bed, whether the desired look is bohemian-inspired, rustic, or minimal. A low platform bed takes up less wall space, which allows for the use of large wall art or an eye-catching accent wall; or in a minimal space, a low platform bed against a neutral wall ensures simplicity.

## 01 A TOUCH OF NATURE

Embracing simple colors and wood tones, this minimalist bedroom by Staprans Design features touches of nature—from the use of plant-inspired

artwork to the abundance of natural light. Finally, the low platform bed is decorated with organic bedding.



## 02 SUNNY & SPACIOUS



This bright, open-concept master bedroom merges simple colors with bold styles—like the intriguing coffee table, unique lighting fixtures, and creative bedside tables. The low platform bed serves as a simple focal point in the modern space by Axis Mundi.

## 03 LIVING AMONG THE MOUNTAINS

Located within the Yellowstone Club in Montana, this mountain-style bedroom features rustic accents and views of the surrounding mountains. Design by LKID.



## 04 CLEAN & CONTEMPORARY

In this contemporary bedroom, JN Interior Spaces uses a sleek wood and leather bed to create a simple yet stylish space.



## 05 A SPLASH OF COLOR

Boasting views of the city, this Toronto penthouse master bedroom pairs bold colors with simple shades of gray. The leather platform bed adds class and sophistication to the colorful interior. Design by Sheree Stuart Design.





## 06 BOHEMIAN CHIC

Here, Khoury & Vogt Architects uses neutral, earth tones to create this bohemian-style master bedroom with a low platform bed. The steel and glass wall makes the space feel brighter, while the vaulted, white-washed oak ceiling makes the room feel larger.



## 07 RUSTIC MINIMALISM

This simple bedroom by Magdalena Keck Interior Design uses a neutral color palette and minimal decor.

The rustic-style headboard and the bed frame appear as though they have been created among nature.



## 08 COOL CONTRASTS WARM

In this space, shades of white and gray contrast with warm wood tones. The patterned rug and throw pillows bring in cool, bright

shades, while the bed frame and the legs of the night stand add warmth. Design by Galo Verdesoto Design.

## 09 GORGEOUS GRAYS

Celebrating different shades of gray and black, this moody bedroom by Isolina Mallon Interiors features a low platform bed.





## 10 SIMPLE & SOOTHING

This soothing master bedroom boasts a gray platform bed, which is adorned with striped and patterned throw pillows. Design by JKA Design.



## 11 A ZEN-INSPIRED SPACE

A Zen-inspired space uses natural colors in soft tones, as does this master retreat by Kari McIntosh Design.



## 12 A POP OF PURPLE

This master bedroom puts a modern twist on a traditional space. Purple throw pillows adorn the low platform bed to add a pop of color. Design by Nystrom Design.



## 13 ECO-FRIENDLY DESIGN

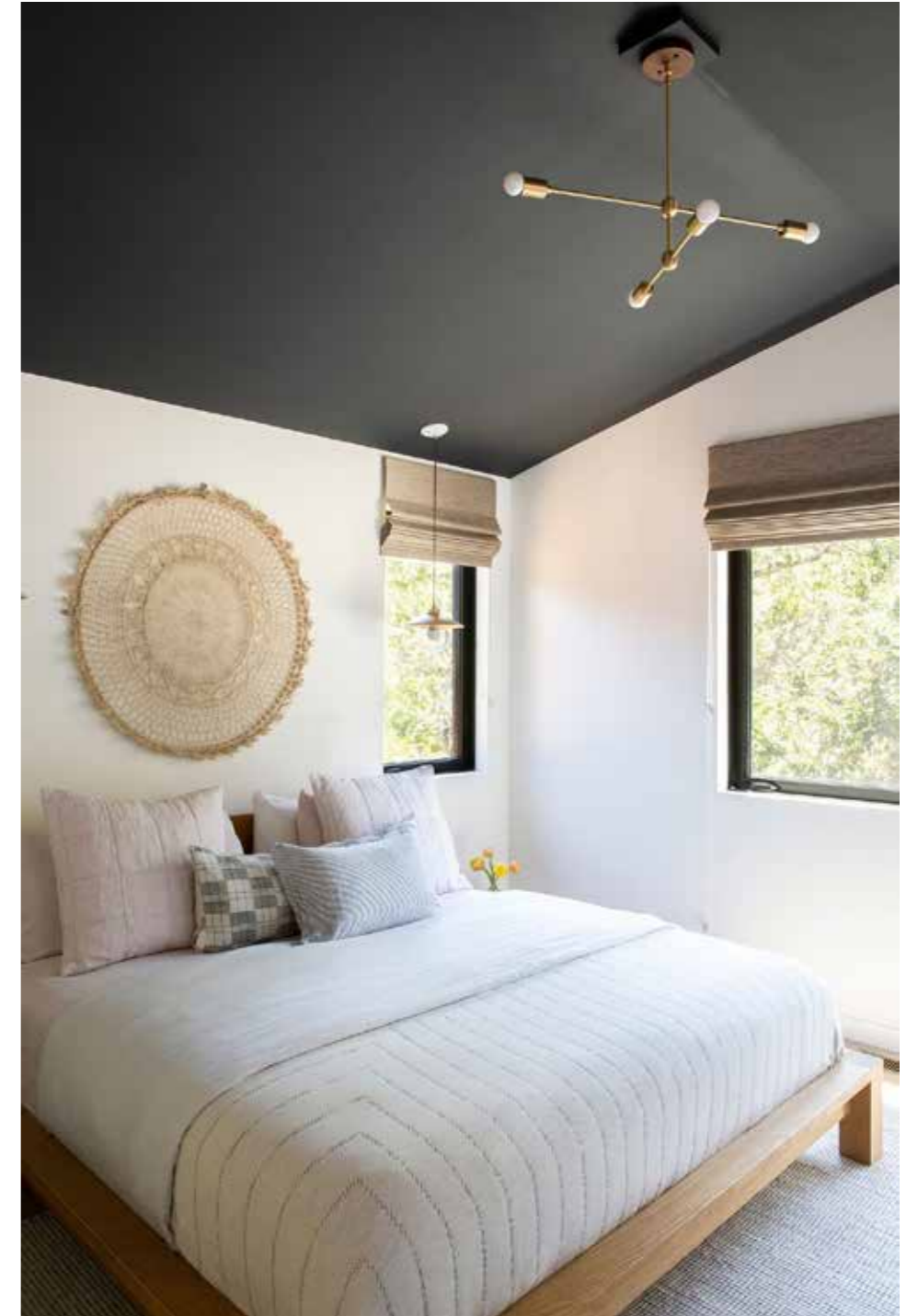
Here, Sarah Barnard Design created a stylish bedroom using custom-made and sustainably-sourced furnishings.



## WARM & COZY

14

Situated within the mountains, this cozy bedroom was designed by Aspen Leaf Interiors. Rust-colored fabrics are used to embellish the white bedding, and the warm wood, platform bed adds an extra touch of warmth to the room.



## 15 HIGH CONTRAST

A master bedroom by Anja Michals Design features a platform bed, contemporary lighting, and textured wall art. The dark blue-gray ceiling contrasts with the white walls and the light bedding.

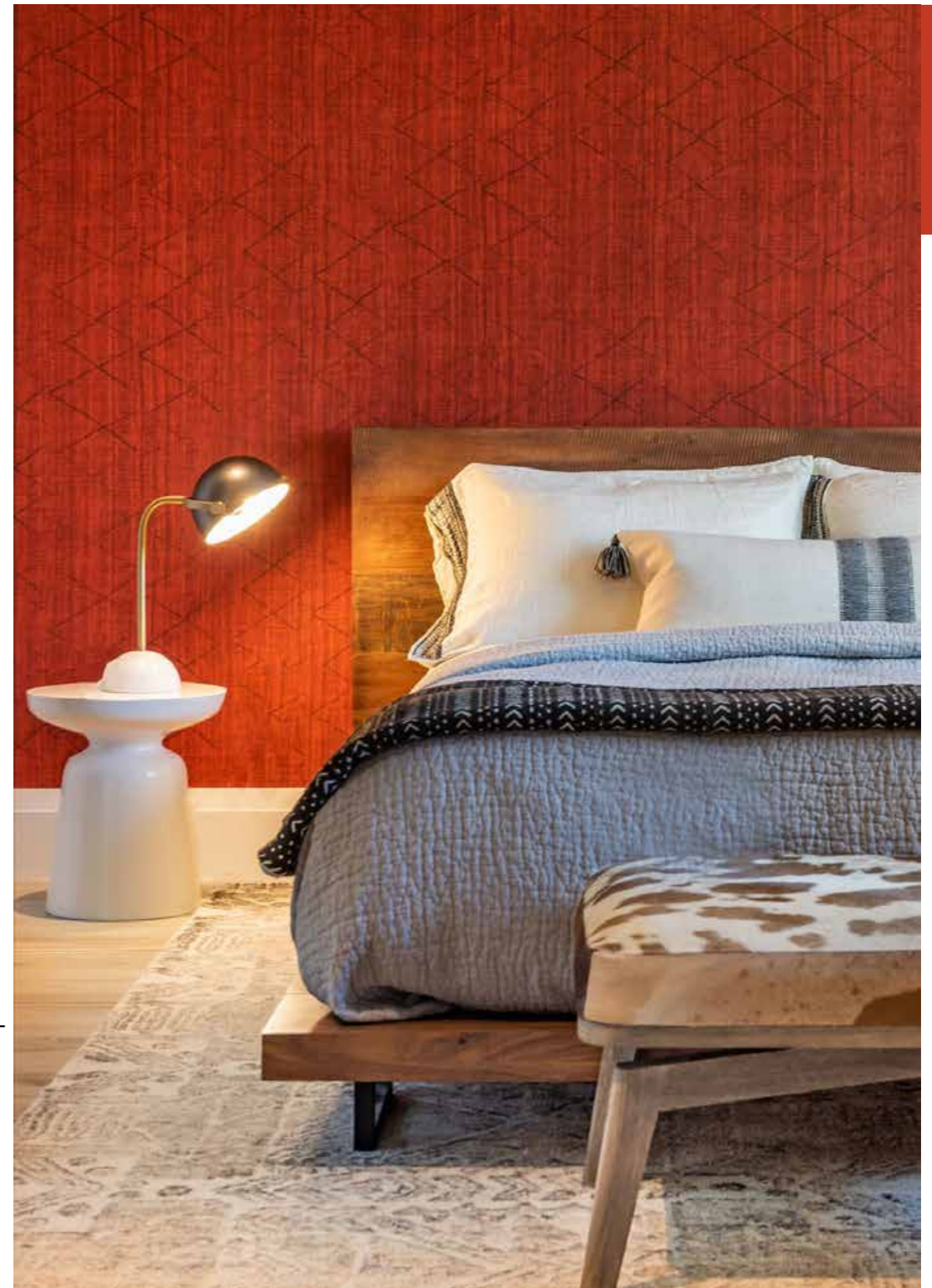


## 16 CLEAN LINES

Floor-to-ceiling windows allow natural light to enter this master bedroom, while the ebonized platform bed keeps the space feeling minimal and clean. Design by Sarah Barnard Design.

## 17 BOLD ACCENT WALL

A low platform bed is situated in front of a bold red accent wall in this stylish space by Maritza Capiro Designs Corp.



# IDEAS FOR STYLING ACRYLIC DINING CHAIRS

# 18

Plastic makes  
a comeback.



Once perceived as purely kitsch, acrylic has become a trendy material for either upping the edge of a contemporary dining room or lending a playful juxtaposition in a more traditional space. In more than 20 dining areas, these Dering Hall designers creatively paired acrylic/lucite chairs with unique accessories and a range of materials, including marble, wood, and metal, to deliver standout designs.



## MID-MODERN NEUTRALS

Here, neutral hues and mid-century designs offer a backdrop for bold seating. Design by Pamela Pennington Studios.



## EYE-CATCHING COLOR

An orange hue adds a pop of color to this dining area. Design by Spencer & Wedekind.



## BOLD CONTRASTS

In a space from Brio Interior Design, a lush, hide rug offsets the sophisticated, synthetic style of the chairs.

# 04

## MID-MODERN NEUTRALS

Here, neutral hues and mid-century designs offer a backdrop for bold seating. Design by Pamela Pennington Studios.



## MAJOR VIEWS

When positioned in front of large windows, contemporary, acrylic seating creates a compelling contrast with the scenery outside. Design by Workroom C.



05

## CALIFORNIA MODERN

As part of a sophisticated, organic design, acrylic chairs provide a contemporary counterpoint. Design by Amanda Barnes Interiors.



06

## ACRYLIC DETAILS

Experiment with a subdued version of the trend by incorporating acrylic chair legs. Design by Jackson Paige Interiors.



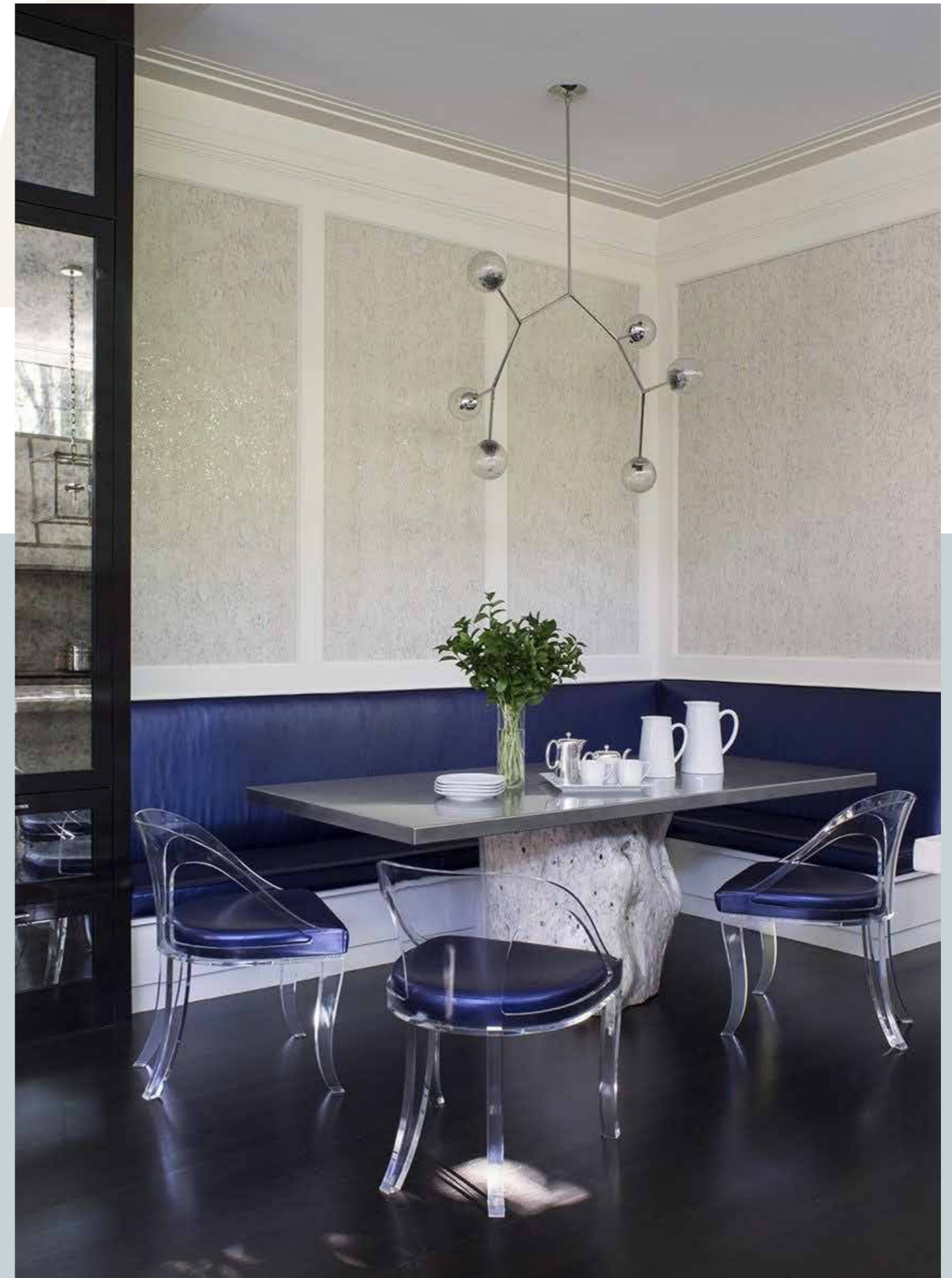
## NOVEL NAVY

In this design by Wendy Labrum Interiors, the upholstery on the chair seats matches that of the banquettes.



## ECLECTIC ELEGANCE

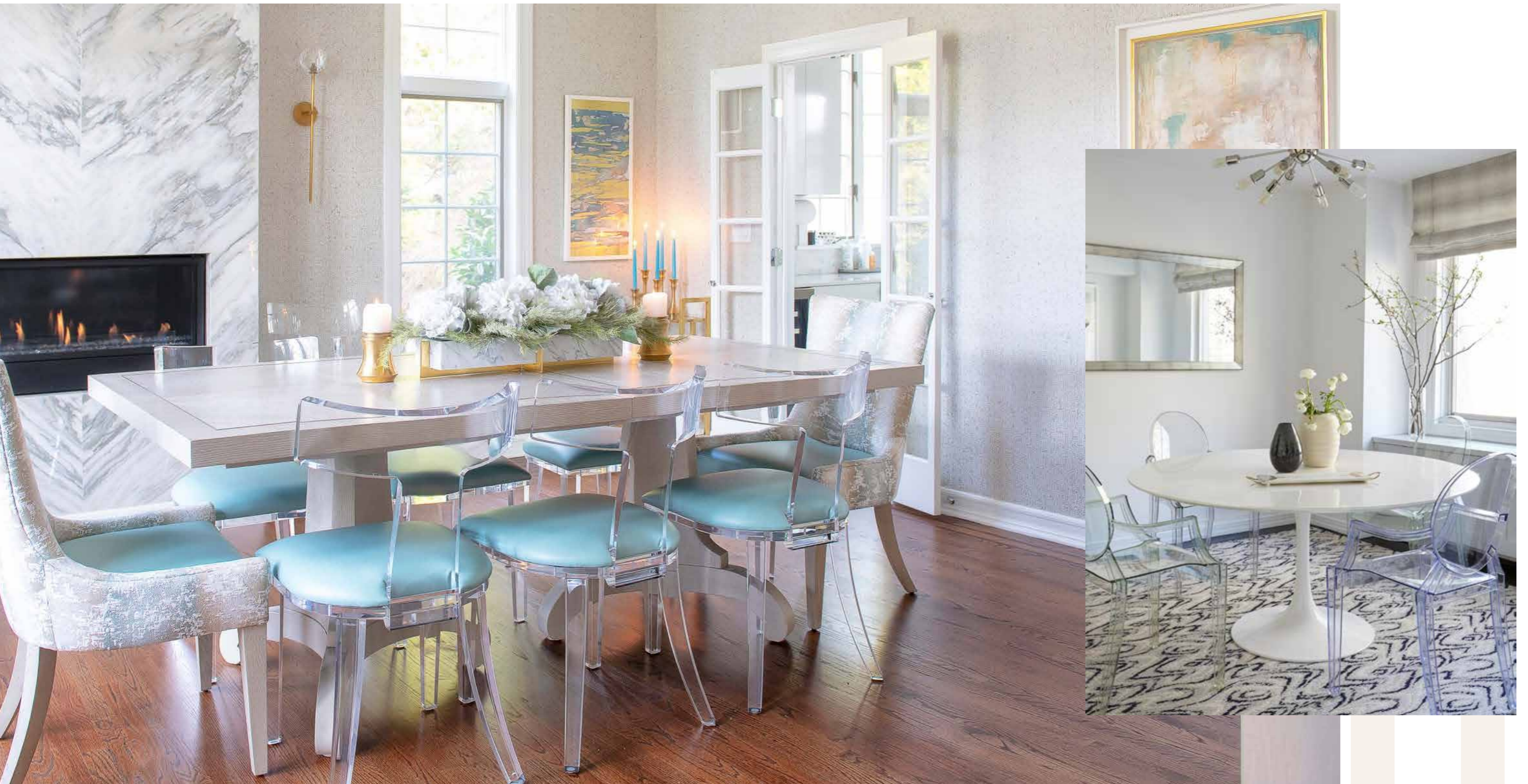
Eclectic accents pop against clean, white walls and cement floors. Design by Meg Lonergan Interiors.



## MATCHING ACCENTS

Clear vases in purple and green complement the look of the dining chairs. Design by Estee Design.





## CONTRASTING MARBLE

A marble fireplace wall mixes well with the acrylic of the chairs. Design by Lara Michelle Interiors.

## CRISP SURROUNDINGS

Here, Brooke Moorhead Design rounds out the space with a Saarinen-style table and silver-hued accessories.



## METAL BORDERS

Metal edges bring presence to these dining chairs in an open-concept area by Lilian H. Weinreich Architects.

## ARTISTIC JUXTAPOSITIONS

Here, Wesley-Wayne Interiors shows that acrylic seating can complement a sophisticated kitchen island.

## SOFT SILHOUETTES

The curved shape of these dining chairs adds softness to this design by Annie Santulli Designs.



## STATEMENT WALLS

A bold wallcovering ups the ante on this design from Brian Paquette Interiors.



## CONTEMPORARY REFLECTIONS

A leaning, floor-length mirror reflects the dining table and chairs. Design by Marcia Moore Design.



## CONTRASTING TEXTURES

Pairing chairs of different materials makes for an eye-catching design. Design by Allison Garcy Interiors.



## NEUTRAL PALETTE

Here, Prop Positions Inc matched the upholstery of the chairs to the surrounding dining area to keep the look light and cohesive.

## Reducing anxiety, one room at a time.

If how we spend our days is how we spend our lives, then if we spend our days anxious, we'll spend our lives anxious, too. And yet, stress is a defining feature of contemporary life—this past year, 55% of Americans reported experiencing "a lot of stress" on a daily basis. Good design might not be able to intervene in a cultural existential crisis, but it can help build spaces that calm and restore us. Here, we talk with interior designers about how they create serene homes that counter the chaos of our lives.

TOP DESIGNERS  
REVEAL HOW TO  
CREATE

THE MOST  
SERENE HOME  
EVER



## PUT OUTDOOR VIEWS FRONT AND CENTER

Nature is known to have a calming effect on mood—and although we spend much of our lives indoors, exterior environments still affect our experience of being, and feeling, at home. For the project pictured above, Dawn Carlson of MAS Design found that the design didn't require much to imbue it with a sense of space. Rather,

she had to step back, and avoid cluttering the home with unnecessary objects that felt designed, rather than natural to their setting: "we think it was successful because it simply paid homage to the environment surrounding it," Carlson says. "Nothing should compete with one's connection to nature in a home like this."

## GOOD LIGHTING IS EVERYTHING

The value of natural light can't be overstated. A quality source of light makes a space glow and lends a sense of serenity difficult to achieve in its absence. David Mann, founder of MR Architecture + Decor, says, "I find that well-modulated, diffused northern

light is a great starting point for laying out a relaxing room." In terms of artificial light, dimmers can "provide a soft light in the evening," says Matthew Caughy, a designer based in New York.



## — CHOOSE A CALMING COLOR PALETTE

Color helps create a mood that ties together a space. "Color may be one of the easiest tools for manipulating mood within a space," says Mann. He suggests that color can operate on mood in "obvious" ways; bright colors are energizing, while muted

colors are calming. "We also use color to denote function, create a narrative, or to connect a space historically," he says. "Manipulating mood is important, but the more layered with meaning a space is, the more interesting it will be."

## CREATE UNIQUE, DESIGNATED SPACES



Mixed-use spaces are important, and hard to escape; however, designated spaces also make a design relaxing, whether the client requires a home office, craft

space, or meditation zone. “We often talk about a work/life balance in the emotional/mental sense, but that applies to physical spaces as well,” says Baker. “It’s much

easier to put the stress and commitments of the work day on hold if you can close the door to your home office and join the family in the kitchen.”

## AVOID SEEKING PERFECTION

When a space feels too designed, it isn’t homey; at the same time, a “homey” space can also signify homely, or not beautiful. To find the balance between overdone and underdone, Carlson subscribes to the

Japanese philosophy of wabi-sabi, meaning “perfect imperfection.” For the kitchen pictured above, Carlson used Himalayan water backpacks as pendant lights. “The organic, imperfect finish adds a nice history, but

also a visual ease that we juxtaposed against a clean white modern countertop,” she says. “Opposing strategies are balanced for just the right harmony and depth.”



## FUNCTIONAL SPACES ARE SERENE SPACES



One of the tenets of good design is to create a space that functions well for your client. However, as a functional design increases the ease of everyday living, it also promotes a sense of calm. As designer Regan Baker puts it, “Ideally you want to feel as though your home is working with you and supporting you as you move through life, and not fighting you at every turn.” Baker

provides an example: “I think we’ve all had that experience of going to grab one pot lid and accidentally setting off a cookware avalanche—if that happens regularly it can start to ebb away at your sense of serenity.” She encourages clients to examine how they use space and in particular, what are their “pain points,” those preventable, repeated moments in which stress

accumulates, leading us to a feeling of fragility. “If something is a part of your life on the daily, making it more functional is going to have a pretty big cumulative impact on your level of calm,” she says. For her, that might mean a stroller closet near the entryway or a set of mugs stored above the coffee maker.



## ENGAGE THE SENSES



### ORGANIZE

After the clutter has been cleaned out, it’s time to organize. When everything has a place, we have fewer things to worry about. “When clutter is tempered, styled, organized, or decorated there becomes

a flow,” says says Melanie Charlton Fowler, owner of Closette, a professional organizing company, explaining how we can allow our energy to flow naturally in a space. No matter the daily routine of the client, interior designers can devise a plan that makes it easy to stay organized.

Smell, touch, sound: all of these elements can promote calm, and are just as important as the visual design of a room. “I would argue that texture always helps to create a richer experience of a space—and I think it particularly helps create a relaxing

space because it engages our sense of touch and requires our brains to slow down and engage at the scale of the fingertip,” says Jennifer Bunsu, founder of Bunsu Studio in Miami. “The more you can engage the senses, the more you will impact mood.”





## EMPHASIZE SPACIOUSNESS

It's hard to read a cramped space as calming. Bounded spaces can create claustrophobia, while wide windows, an open-concept layout, and generous square footage seem to offer possibilities. Mann refers to this feeling of openness as a "sense of spaciousness"—each area flows into the next without inhibitions, and with common elements that tie the various rooms and areas together.



## DESIGN LIKE A FILM DIRECTOR

With many designers and design lovers relying on Instagram for inspiration, it's easy to imagine design as a single, framed image, frozen in time and space. However, if we think of design as more of an immersive film rather than a square still life passing through our feed, it's easier to understand how various elements inspire different emotions, like peacefulness. Films are designed to inspire emotion. The color, sound, and frame associated with each image sparks a particular emotion, driving the viewer deeper into the feeling of the story the film is trying to tell.

# BEAUTIFUL KITCHENS WITH DARK BACKSPLASHES

In deep green, navy, or black, a dark kitchen backsplash can round out a moody kitchen or bring a touch of sophistication to a bright

space. Discover these elegant kitchens for ideas on how to incorporate a dark backsplash in an upcoming renovation or new build.



Don't be afraid to  
embrace dark colors in  
the kitchen.



## HIGH CONTRAST

Here, Andrea Schumacher Interiors creates contrast by pairing bright white cabinetry with dark fan backsplash tiles.

Here, Andrea Schumacher Interiors creates contrast by pairing bright white cabinetry with dark fan backsplash tiles.



## GORGEOUS GRAYS

Light gray cabinetry and flooring is paired with a dark gray backsplash in this sleek space by Studio Gild.



## A SPLASH OF GOLD

Striking gold accents complement the dark gray backsplash and cabinetry in a bachelor pad by Frampton Co.



## INDUSTRIAL MODERN

This dark, moody interior blends industrial features (notice the exposed brick wall and industrial pendant lighting) with modern touches (like the stainless steel appliances and sleek hardware). Design by Nicholas Moriarty Interiors.



## BLACK & WHITE

Here, Eclectic Home creates an eye-catching backsplash with black and white tiling.



## DARK VERSUS LIGHT

Even with a dark green backsplash, this kitchen by Amy Aidinis Hirsch Interior Design feels light and bright.



## MOODY MINIMALISM

This minimalist kitchen by Stefani Stein features a jet black backsplash, oak cabinetry, and marble countertops.



## RUSTICS MEETS MODERN

Raw wood beamed ceilings and exposed brick walls give this kitchen a rustic vibe, while the sleek backsplash, cabinetry, and hardware lend a modern look. Design by LKID.



## GORGEOUS AND GLOSSY

Your eye will be drawn to the gray, glossy subway tiles in this stylish kitchen by Tiffany Leblanc of LeBlanc Design.



## SIMPLE AND SOPHISTICATED

Here, Brown Design Group opts for gray tilework to create a simple, Shaker-style kitchen with clean lines and neutral colors.



## A FRESH LOOK

In this stylish space, 2Michaels Design uses pendant lighting, open shelving, and cool gray walls.



## A MIX OF DARK AND LIGHT

Soapstone countertops, a dark backsplash, and a burgundy range bring a dark sophistication to this West Hollywood kitchen by Lori Gilder Interior Makeovers, while natural greenery livens the moody interior.



## BURST OF BLUE

A deep blue backsplash serves as the focal point in this modern kitchen by Workroom C.



## A BOLD LOOK

Glossy and dark black, an eye-catching backsplash gives this kitchen by Workroom C an edge.



## INSPIRED BY NATURE

Mimicking natural rock, this earth-toned backsplash matches the island's countertop. Design by Catlin Design.



## RUSTIC MOUNTAIN STYLE

This rustic mountain kitchen by S.B. Long Interiors features a display of copper pots and exposed wood beams, which is mixed with a dark backsplash and countertop.

visually inspired.

# PHOTOGRAPHY

SUMMER  
MORNING





Martin Rak





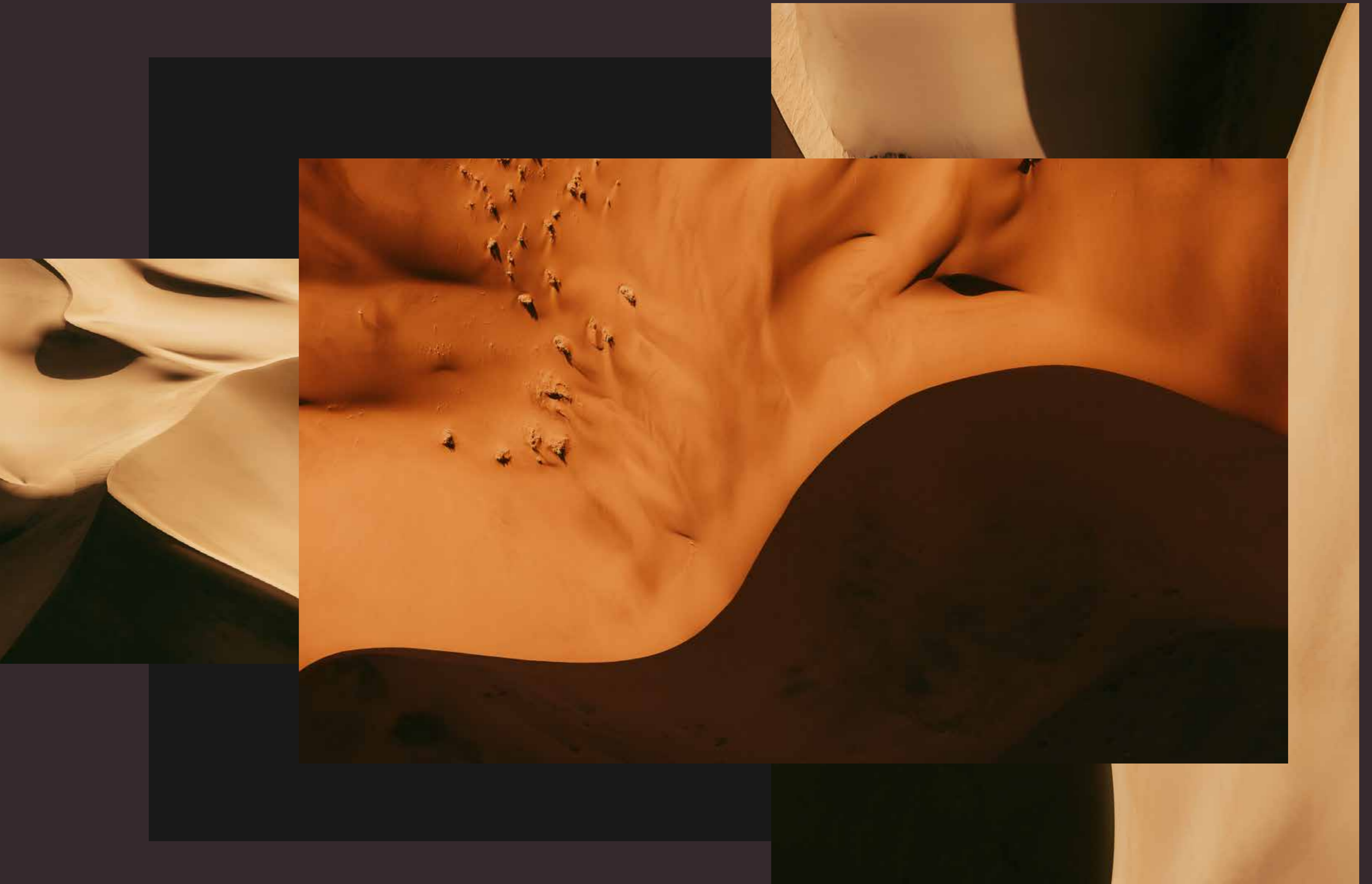


visually inspired.

SAND DUNE  
SERIES

# PHOTOGRAPHY







53  
INSPIRED